

File D:\DATA\PRO3021-HPLC

Acq. Method : D:1-HPLC.M

Analysis Method : D:1-HPLC.M

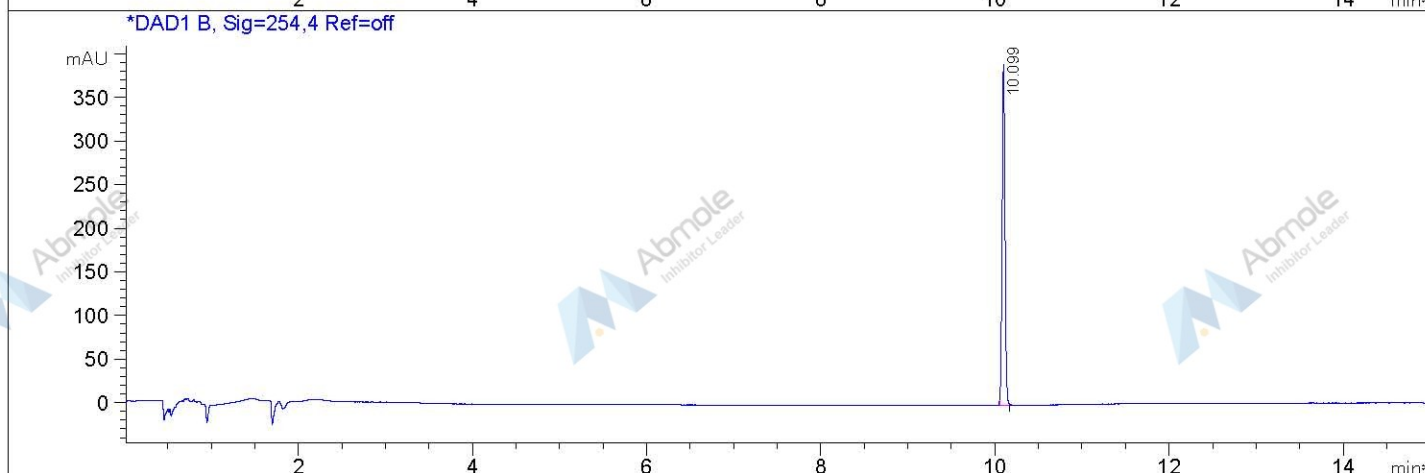
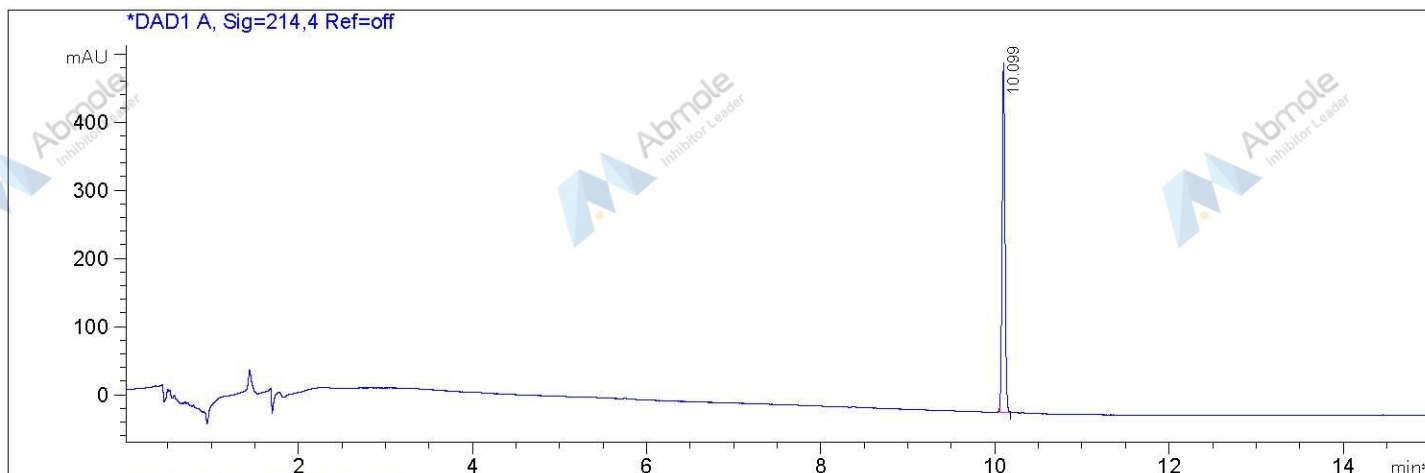
Sample Info : Easy-Access Method: '1-HPLC.M'

Method Info : Column:Xbridge C18 (4.6x150 mm, 3.5um)

Mobile phase: H2O(10 mmol NH4HCO3) (A) / ACN(B)

Elution program: Gradient from 5 to 95% of B in 9min at 1ml/min Temperature: 50°

Detection: UV (214 , 4 nm) and MS (ESI, Neg mode , 70 to 900 amu)



Integration Results for DAD1 A, Sig=214,4 Ref=off

| RetTim | Width | Area | Height | Area% |
|--------|-------|---------|--------|--------|
| 10.10 | 0.04 | 1178.31 | 506.07 | 100.00 |

Integration Results for DAD1 B, Sig=254,4 Ref=off

| RetTim | Width | Area | Height | Area% |
|--------|-------|--------|--------|--------|
| 10.10 | 0.04 | 896.93 | 386.36 | 100.00 |