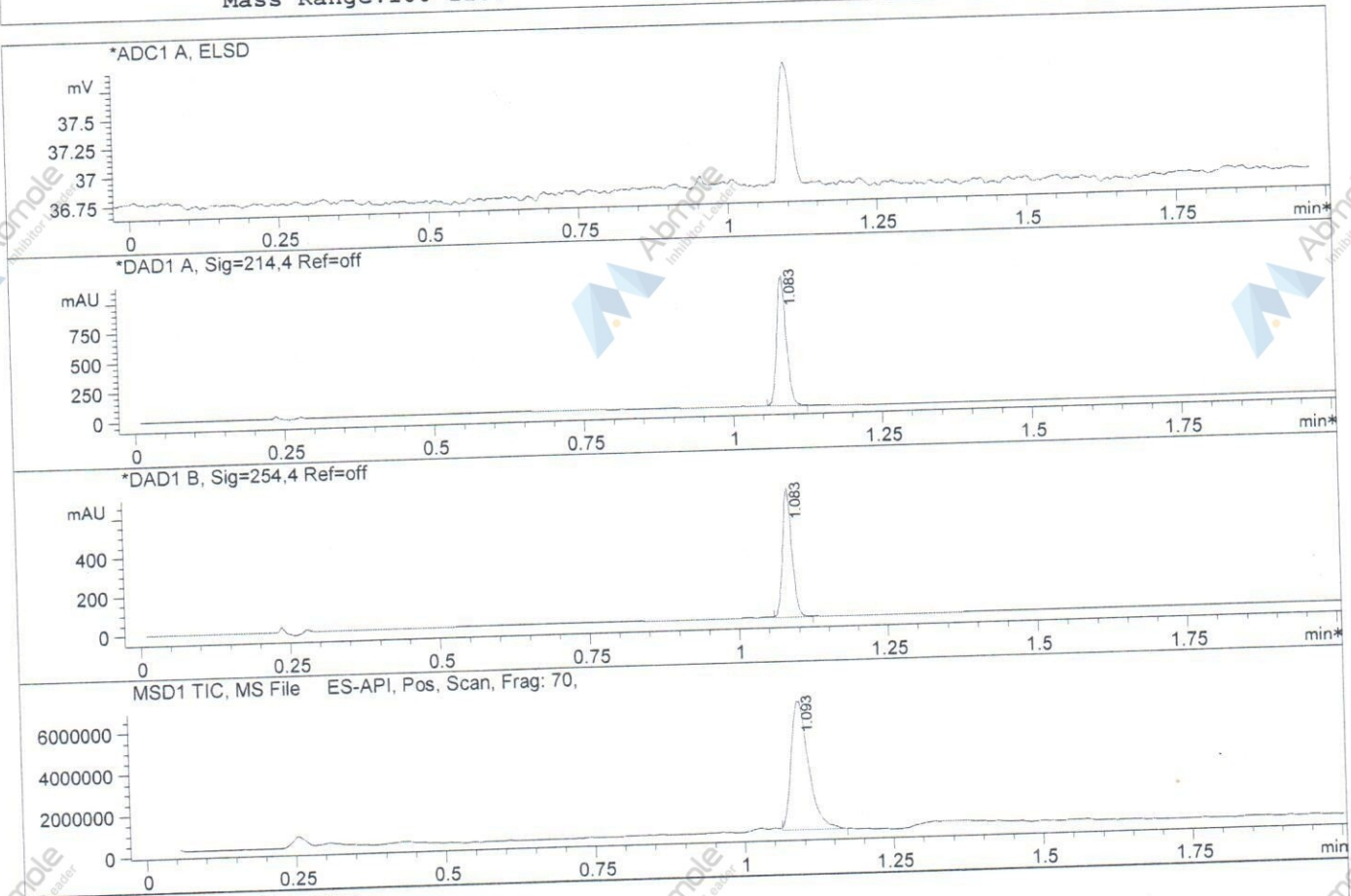


Report

File D:\DATA
 Injection Date : 24 Sep 14 1:45
 Sample Name : MK-6096-01
 Acq. Operator : XXXX
 Spec. Reported : MS Integration
 Acq. Method : C:\Chem32\1\METHODS\1-POS-2MIN.M
 Analysis Method : C:\Chem32\1\METHODS\1-POS-2MIN.M
 Sample Info : Easy-Access Method: '1-POS-2MIN'
 Method Info : Mobile Phase: A: Water(0.01%TFA) B: ACN(0.01%TFA)
 Gradient: 5%B increase to 100%B within 0.8min,100%B for 1.1min.
 Flow Rate:1.5mL/min
 Column: Chromolith Fast Gradien RP-18e,50-3mm.
 Column Temperature: 40C
 Mass Range:100-1100



Integration Results for ADC1 A, ELSD

RetTim	Width	Area	Height	Area%
--------	-------	------	--------	-------

Integration Results for DAD1 A, Sig=214.4 Ref=off

RetTim	Width	Area	Height	Area%
1.08	0.02	1227.30	1103.44	100.00

Integration Results for DAD1 B, Sig=254.4 Ref=off

RetTim	Width	Area	Height	Area%
1.08	0.02	723.45	656.14	100.00

Report

Ret. Time: 1.09

<<<< POSITIVE SPECTRA >>>>

