

File D:\DATA

Injection Date : 1 Sep 14 10:10

Sample Name : IPI-145-01

Acq. Operator : XXXX

Spec. Reported : MS Integration

Acq. Method : C:\Chem32\1\METHODS\1-POS-2MIN.M

Analysis Method : C:\Chem32\1\METHODS\1-POS-2MIN.M

Sample Info : Easy-Access Method: '1-POS-2MIN'

Method Info : Mobile Phase: A: Water(0.01%TFA) B: ACN(0.01%TFA)

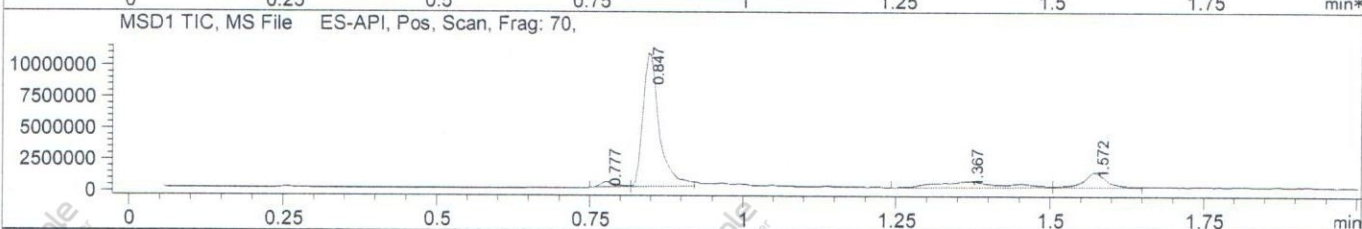
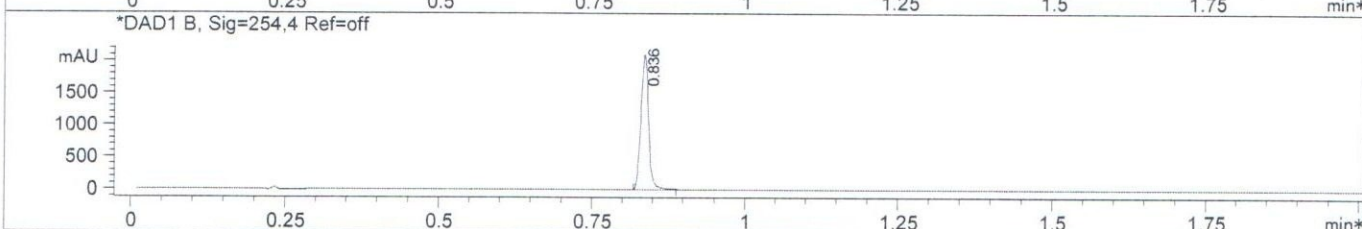
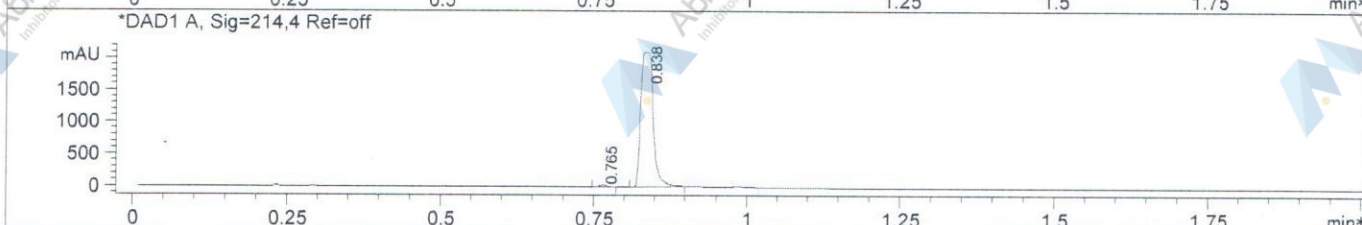
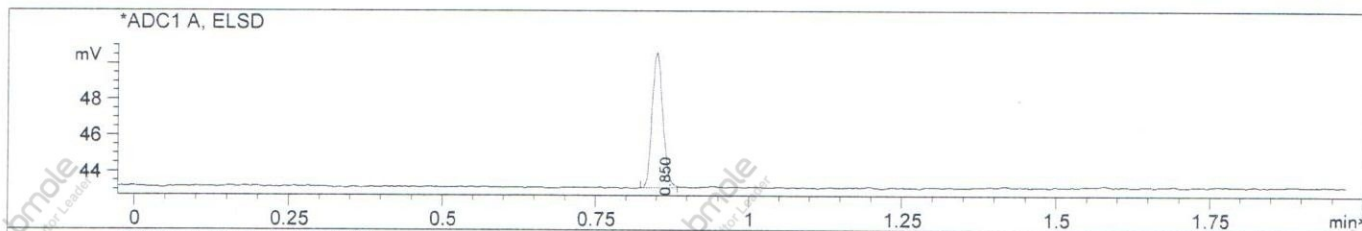
Gradient: 5%B increase to 100%B within 0.8min,100%B for 1.1min.

Flow Rate:1.5mL/min

Column: Chromolith Fast Gradien RP-18e,50-3mm.

Column Temperature: 40C

Mass Range:100-1100



Integration Results for ADC1 A, ELSD

RetTim	Width	Area	Height	Area%
0.85	0.02	9.34	7.55	100.00

Integration Results for DAD1 A, Sig=214,4 Ref=off

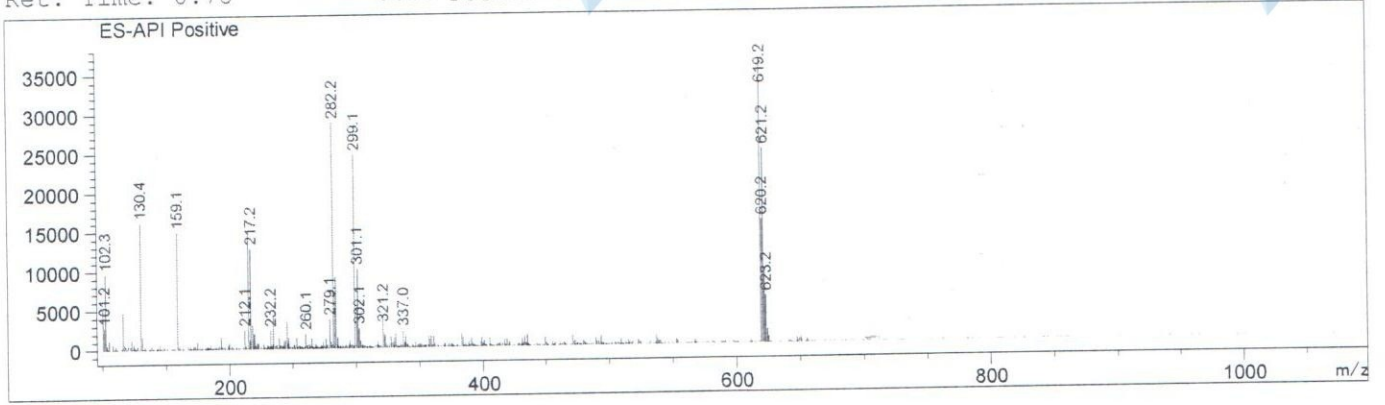
RetTim	Width	Area	Height	Area%
0.77	0.01	24.61	32.42	0.81
0.84	0.02	3003.83	2101.62	99.19

Integration Results for DAD1 B, Sig=254,4 Ref=off

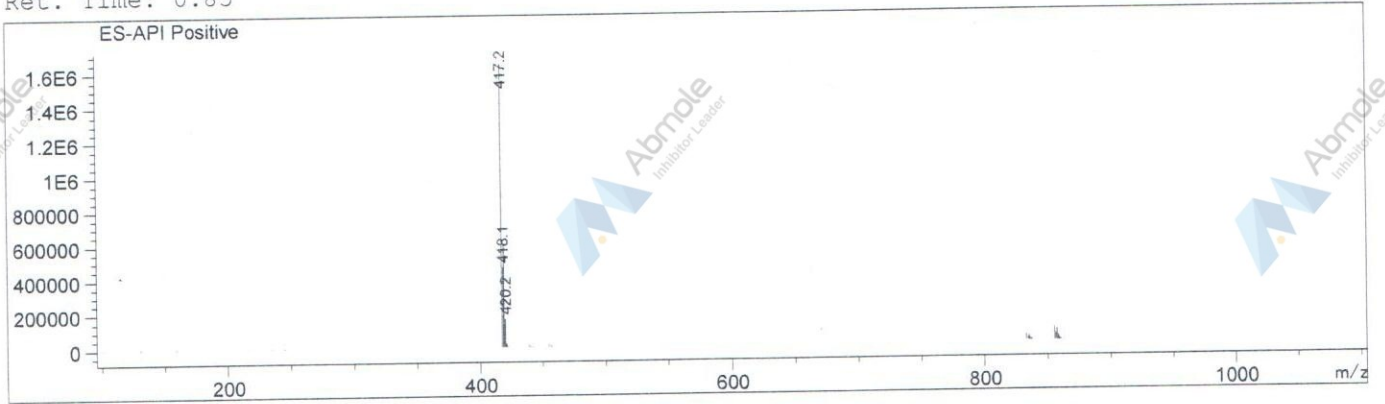
RetTim	Width	Area	Height	Area%
0.84	0.01	1881.32	2099.72	100.00

Ret. Time: 0.78

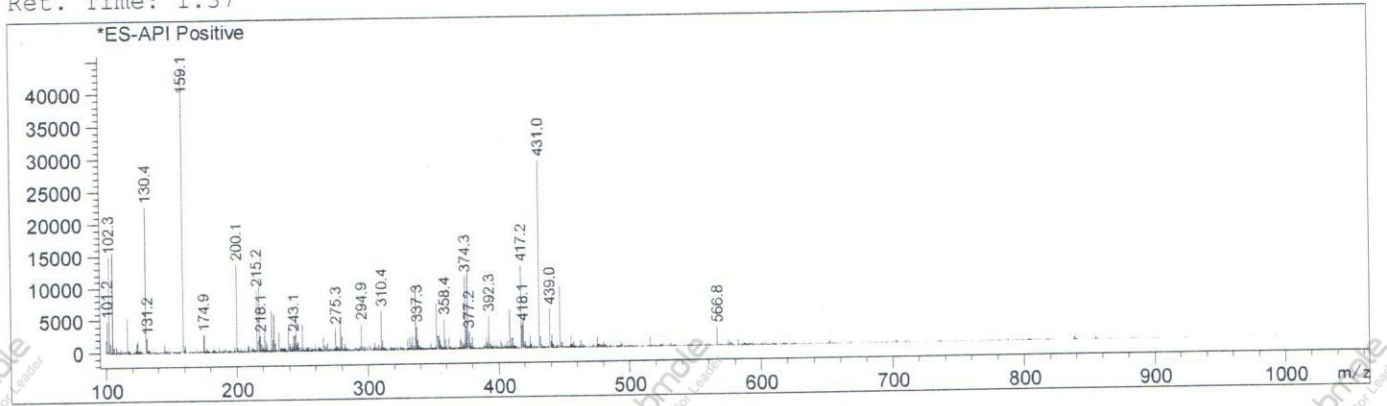
<<<< POSITIVE SPECTRA >>>>



Ret. Time: 0.85



Ret. Time: 1.37



Ret. Time: 1.57

