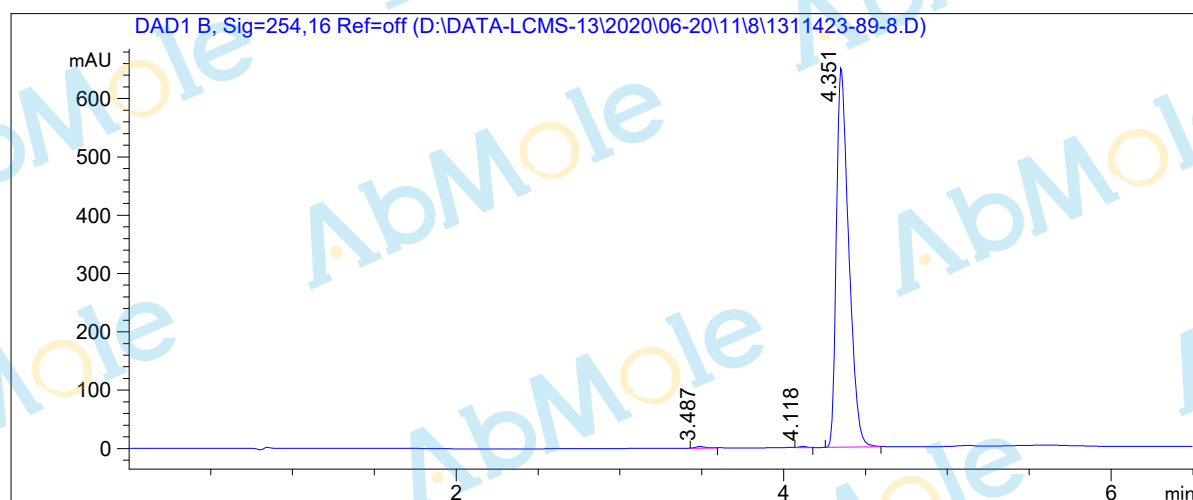


LCMS Report

Sample Name : YF2-01
Data File : D:\DATA-LCMS-13\2020\06-20\11\8\1311423-89-8.D
Injection Date : Thu, 11. Jun. 2020 Inj. Vol. : 2ul
Acq Operator : LCMS-13 Location : Vial 81
Acq. Method : D:\data-lcms-13\2020\06-20\11\8\P-20-95-C2.M
Method Info. : column:waters Sunfire C18 3.5um, 50*4.6mm ;mobile phase:
B(ACN) . A(0.02%NH4Ac); gradient(B%)!as Acq.Method above



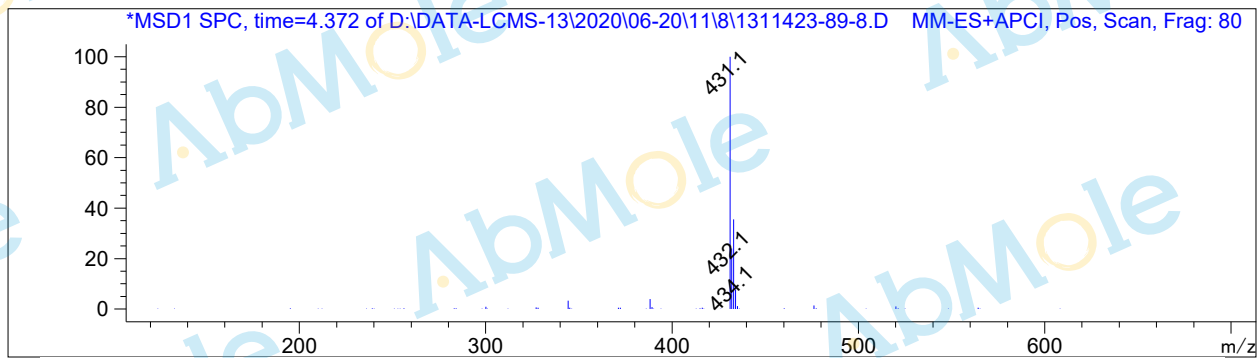
Integration Results

Signal 1: DAD1 B, Sig=254,16 Ref=off

#	R.T.	Type	Height	Height%	Width	Area	Area %
1	3.487	FM	3.029	0.461	0.069	12.632	0.367
2	4.118	FM	2.077	0.316	0.056	6.951	0.202
3	4.351	BB	652.546	99.224	0.079	3426.632	99.432

Signal 2: MSD1 TIC, MS File

#	R.T.	Type	Height	Height%	Width	Area	Area %
1	4.380	MM	699935.625	100.000	0.118	4.945e+006	100.000



*** End of Report ***