

11.483

9.801

8.984

8.187

8.164

7.738

7.715

7.288

6.524

5.425

5.260

4.737

4.730

3.362

2.841

2.835

2.504

1.909

1.891

1.873

1.855

1.838

0.904

0.886

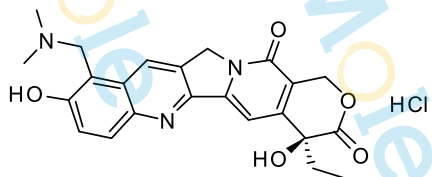
0.868

-0.001

Sample Name: Topotecan hydrochloride-03

Chemical Formula: C₂₃H₂₄ClN₃O₅

Molecular Weight: 457.91



CAS: 119413-54-6

DMSO-d₆, 400 MHz

1.00

0.95

1.00

1.02

1.02

1.01

0.83

2.08

2.07

2.01

6.14

2.03

3.22

12

10

8

6

4

2

0

PPM