

File D:\DATA\PRO2527-LCMS

Injection Date : 26 Nov 14 11:31 am +0800

Tgt Mass (EZ) :

Sample Name : TAK-875-LCMS

Location : P1-D-09

Acq. Operator : LCMS

Inj : 1

Spec. Reported : MS Integration

Inj Volume : 2 ul

Acq. Method : C:\Chem32\1\METHODS\1-POS-3MIN.M

Analysis Method : C:\Chem32\1\METHODS\1-POS-3MIN.M

Sample Info : Easy-Access Method: '1-POS-3min'

Method Info : Mobile Phase: A: water(0.01%TFA) B: ACN(0.01%TFA)

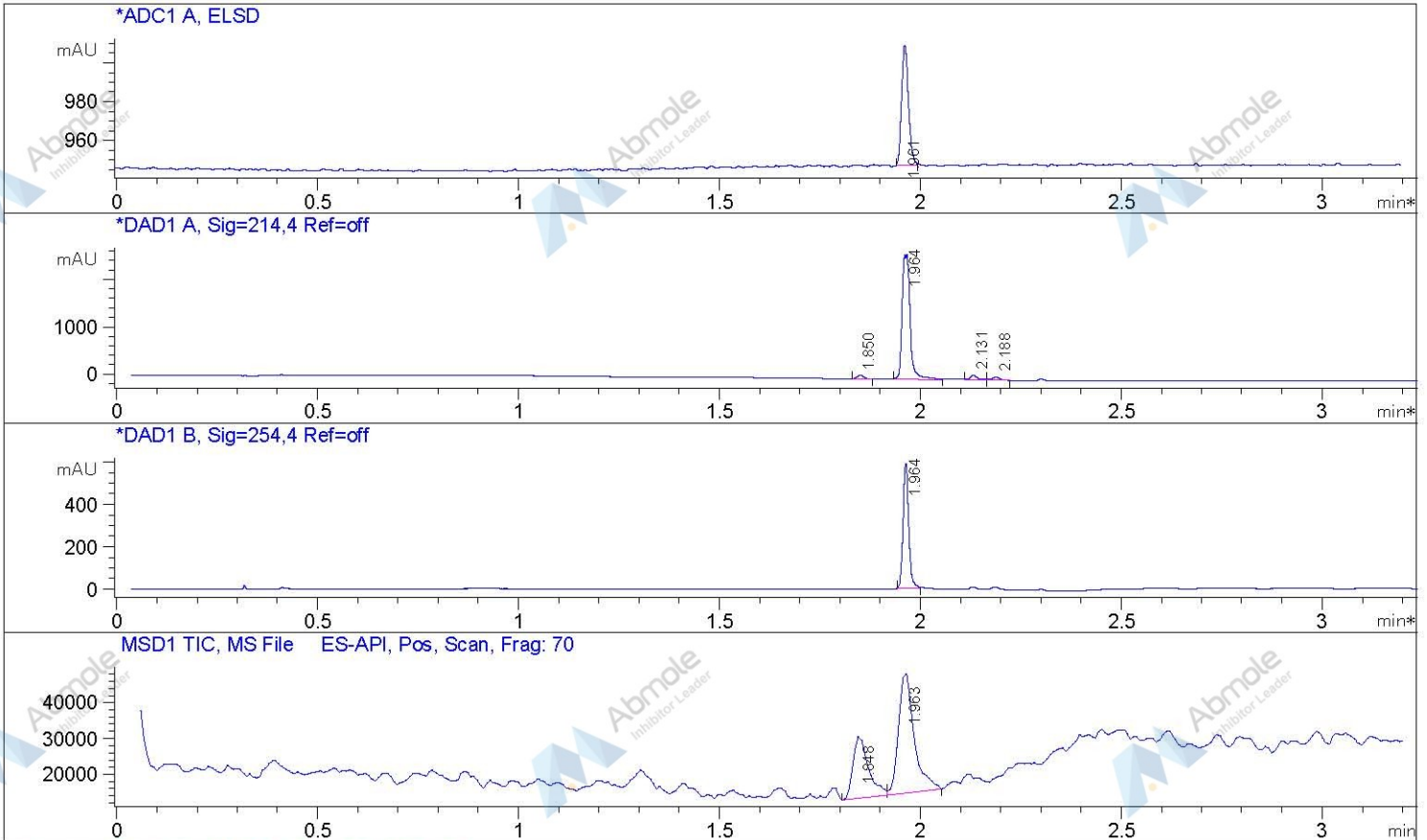
Gradient: 5%-95% B in 1.7 min

Flow Rate: 2.2 ml/min

Column: SunFire C18, 4.6*50mm, 3.5um

Column Temperature: 50 C

MASS Range:110-900



Integration Results for DAD1 A, Sig=214,4 Ref=off

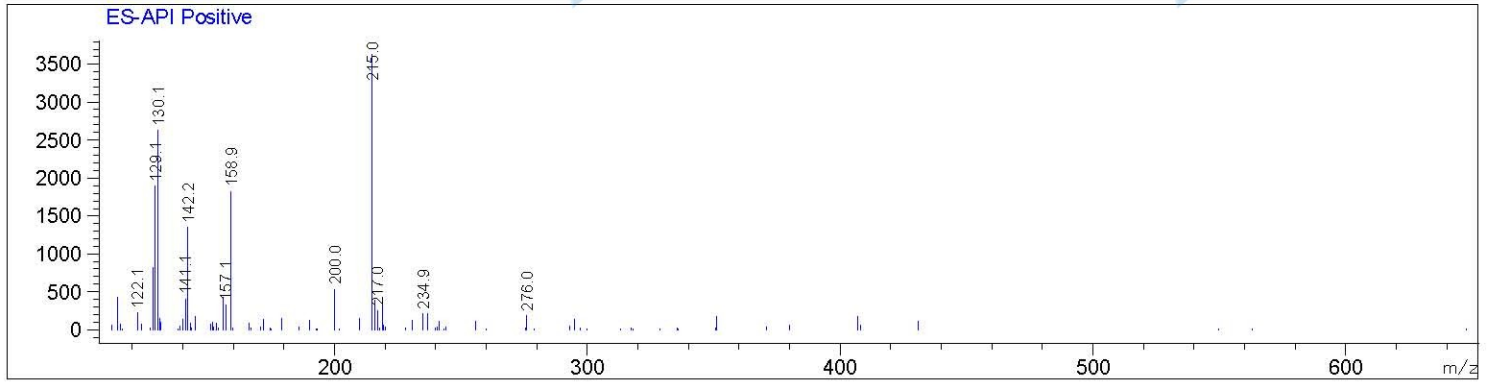
RetTim	Width	Area	Height	Area%
1.85	0.02	16.38	13.63	0.19
1.96	0.02	3641.04	2591.55	98.86
2.13	0.02	62.62	62.96	0.66
2.19	0.02	10.47	12.92	0.29

Integration Results for DAD1 B, Sig=254,4 Ref=off

RetTim	Width	Area	Height	Area%
1.96	0.02	577.28	589.50	100.00

Ret. Time: 1.85

<<<< POSITIVE SPECTRA >>>>



Ret. Time: 1.96

