

File D:\DATA\TAK-632-HPLC

Injection Date : 03-Mar-14, 15:55:46

Sample Name : TAK-632-HPLC

Acq. Operator : HPLC

Spec. Reported : MS Integration

Acq. Method : C:\Chem32\1\METHODS\2-HPLC-15MIN.M

Analysis Method : C:\Chem32\1\METHODS\2-HPLC-15MIN.M

Sample Info :

Method Info : Mobile Phase: A: water (0.01%TFA) B: ACN (0.01%TFA)

Gradient: 0min 5%B,3min 5%B,10min 95%B,15min 95%B

Flow Rate: 1.2 ml/min

Column: Eclipse XDB-C18,4.6\*150mm,5um

Oven Temperature: 40 C

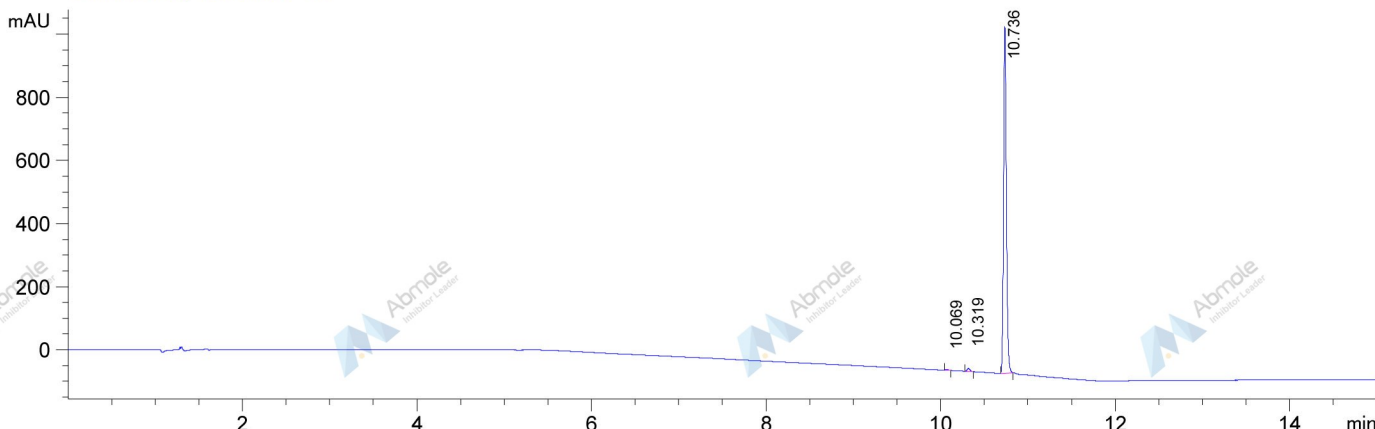
Tgt Mass (EZX) :

Location : P1-F-08

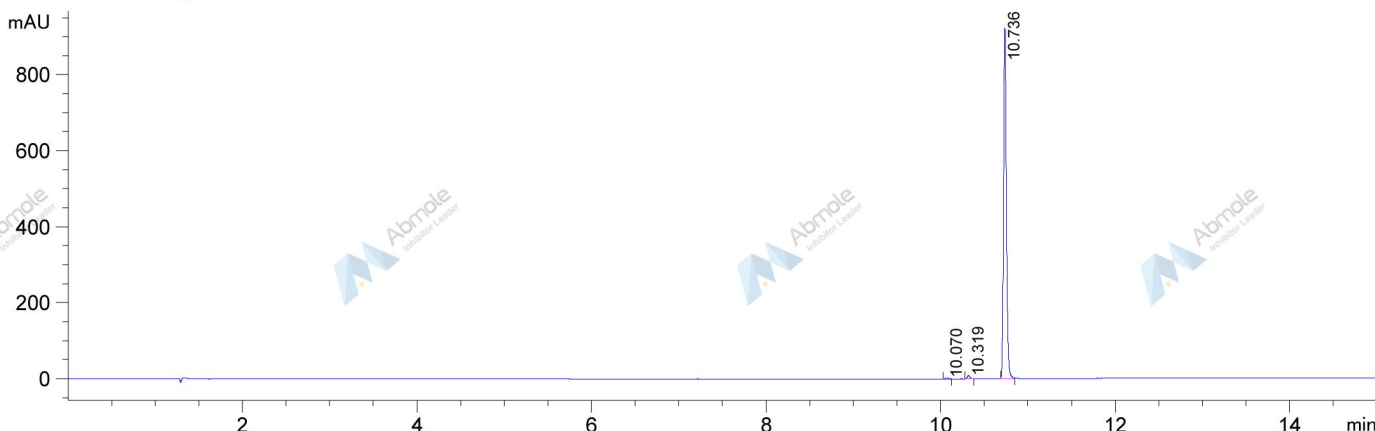
Inj : 0

Inj Volume : 2 ul

DAD1 A, Sig=214,4 Ref=off



DAD1 B, Sig=254,4 Ref=off



Integration Results for DAD1 A, Sig=214,4 Ref=off

RetTim	Width	Area	Height	Area%
10.07	0.03	6.31	2.95	0.25
10.32	0.03	21.43	9.86	0.86
10.74	0.03	2462.48	1096.32	98.89

Integration Results for DAD1 B, Sig=254,4 Ref=off

RetTim	Width	Area	Height	Area%
10.07	0.03	6.78	3.10	0.32
10.32	0.03	18.14	8.41	0.86
10.74	0.03	2083.15	921.71	98.82