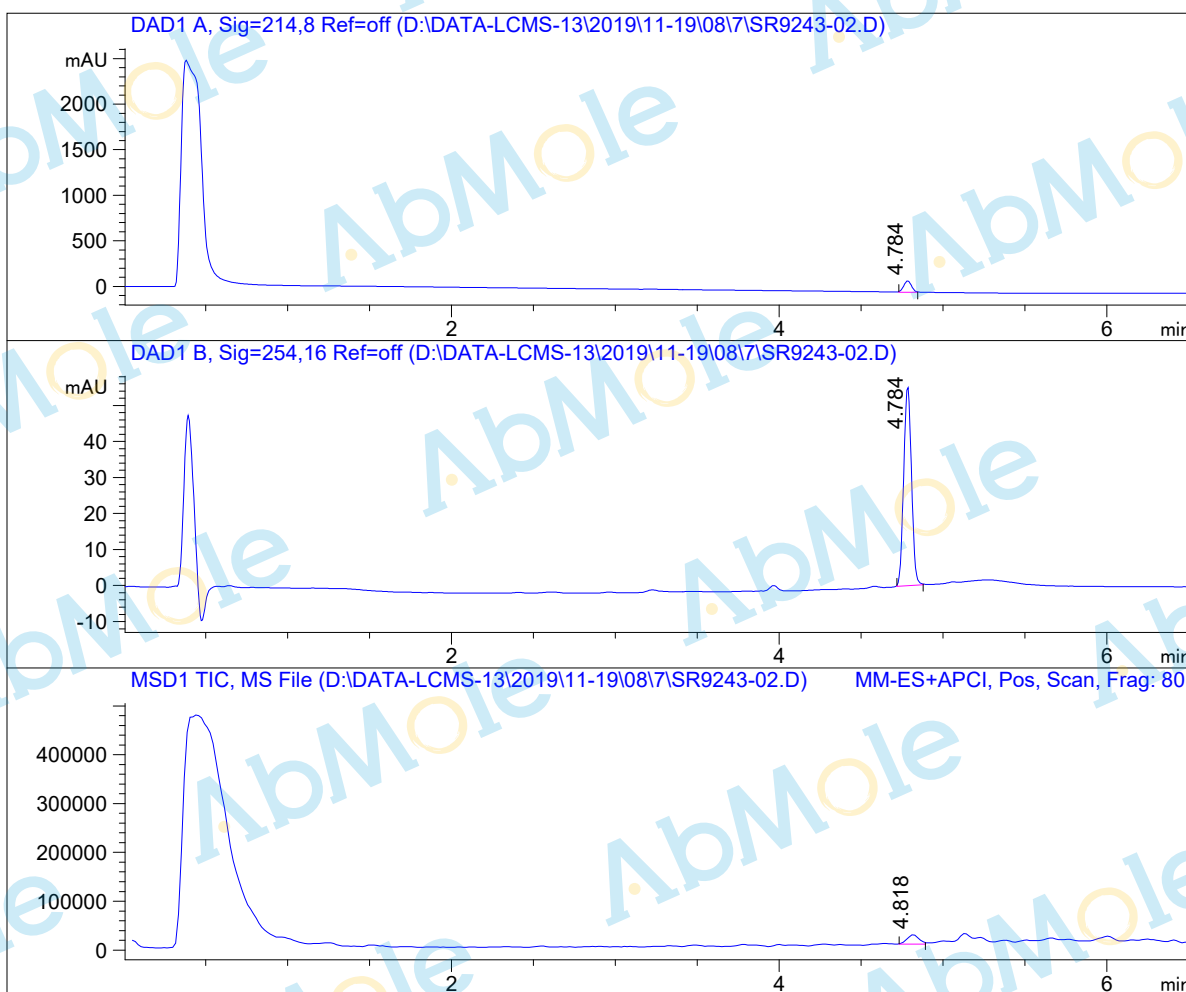


LC-MS Report

Sample Name : SR9243-02
Data File : D:\DATA-LCMS-13\2019\11-19\08\7\SR9243-02.D
Injection Date : Sat, 9. Nov. 2019 Inj. Vol. : 10ul
Acq Operator : LCMS-13 Location : Vial 14
Acq. Method : D:\data-lcms-13\2019\11-19\08\7\P-20-95-C2.M
Method Info. : column:C18;column size:4.6*50mm ;mobile phase:B (ACN)
A(0.02%NH4Ac); gradient(B%)!as Acq.Method above



Integration Results

Signal 1: DAD1 A, Sig=214,8 Ref=off

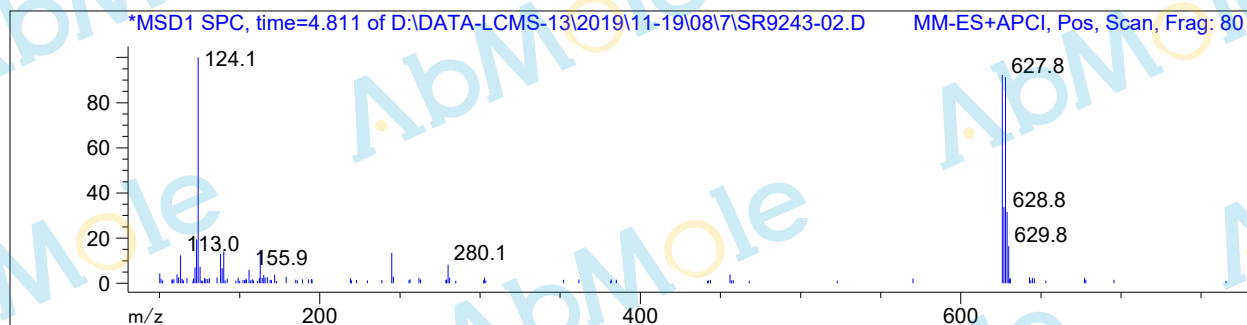
#	R.T.	Type	Height	Height%	Width	Area	Area %
1	4.784	MM	124.501	100.000	0.055	408.731	100.000

Signal 2: DAD1 B, Sig=254,16 Ref=off

#	R.T.	Type	Height	Height%	Width	Area	Area %
1	4.784	BB	55.296	100.000	0.052	182.339	100.000

Signal 3: MSD1 TIC, MS File

#	R.T.	Type	Height	Height%	Width	Area	Area %
1	4.818	MM	19605.100	100.000	0.086	100643.203	100.000



*** End of Report ***