

LCMS Report

Sample Name : SR8278-01
 Data File : D:\DATA-LCMS-13\2020\03-20\19\2\SR8278-01.D
 Injection Date : Thu, 19. Mar. 2020 Inj. Vol. : 3ul
 Acq Operator : LCMS-13 Location : Vial 81
 Acq. Method : D:\data-lcms-13\2020\03-20\19\2\P-20-95.M
 Method Info. : column:Eclipse XDB-C18 5um 4.6*150mm ;mobile phase:B(ACN) A(0.02%NH4AC); gradient(B%)!as Acq.Method above



Integration Results

Signal 1: DAD1 A, Sig=214,8 Ref=off

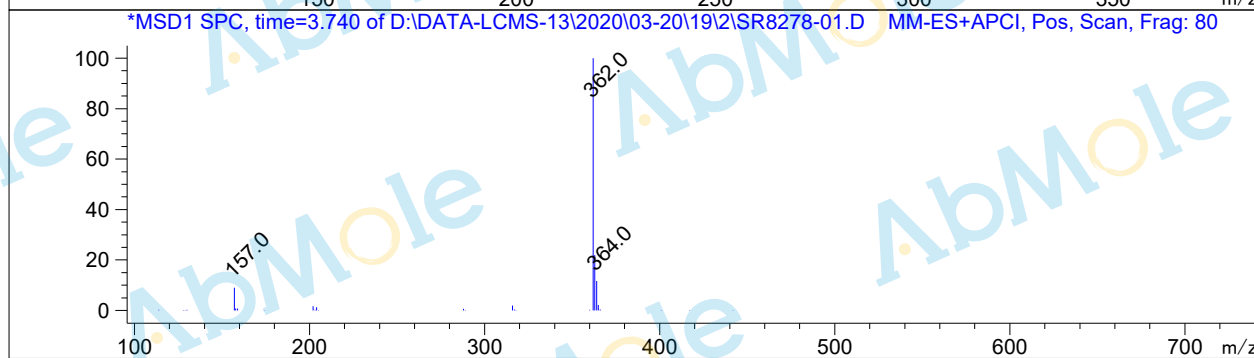
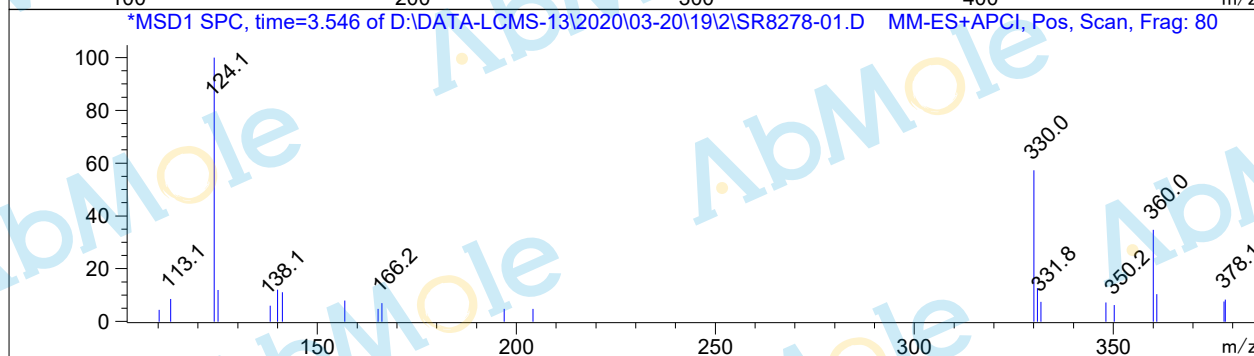
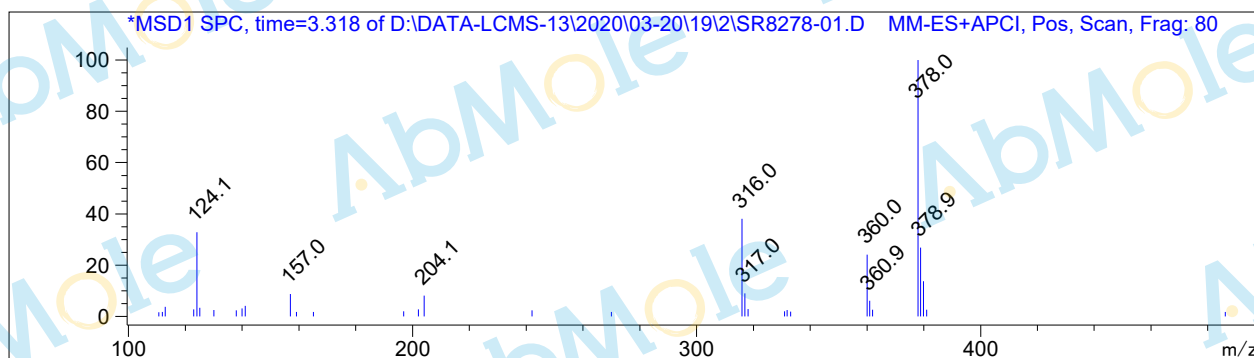
#	R.T.	Type	Height	Height%	Width	Area	Area %
1	2.600	MF	2.526	0.173	0.045	6.820	0.153
2	3.147	MF	1.394	0.095	0.056	4.685	0.105
3	3.295	FM	6.982	0.478	0.055	23.062	0.518
4	3.527	MF	1.258	0.086	0.071	5.381	0.121
5	3.715	FM	1448.642	99.168	0.051	4412.950	99.103

Signal 2: DAD1 B, Sig=254,8 Ref=off

#	R.T.	Type	Height	Height%	Width	Area	Area %
1	2.597	MF	2.281	0.337	0.049	6.673	0.323
2	3.297	MF	4.988	0.737	0.053	15.856	0.769
3	3.530	MM	0.747	0.110	0.060	2.700	0.131
4	3.715	VB	668.527	98.815	0.048	2037.745	98.777

Signal 3: MSD1 TIC, MS File

#	R.T.	Type	Height	Height%	Width	Area	Area %
1	3.320	MF	7990.843	0.681	0.071	33848.508	0.590
2	3.548	MM	2550.999	0.218	0.069	10575.521	0.184
3	3.741	MF	1.162e+006	99.101	0.082	5.690e+006	99.225



*** End of Report ***