

7.341
7.260
7.233
7.221
7.216
7.211
7.199
7.185
7.161
7.118
6.979
6.971

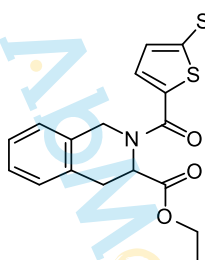
5.360
5.087
5.047
4.903

4.141
4.132
4.115
4.098
4.081
4.064
4.054
3.338
3.329
3.299
3.290
3.247
3.233
3.207
3.193
2.562

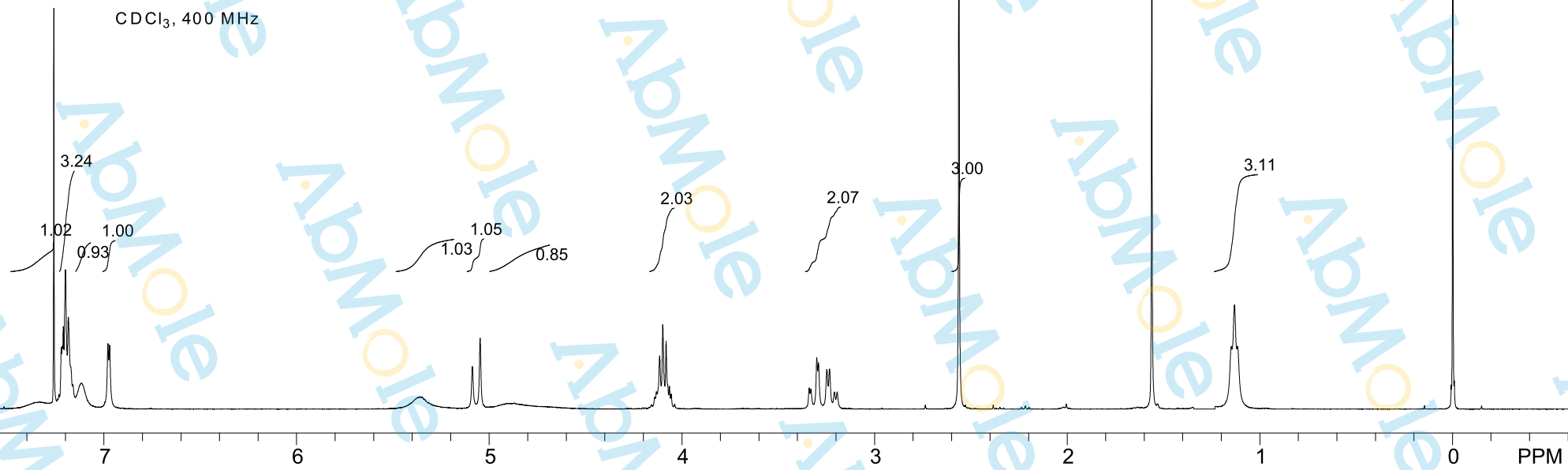
1.561
1.148
1.132
1.116

-0.000

Sample Name: SR8278-01
Chemical Formula: C₁₈H₁₉NO₃S₂
Molecular Weight: 361.48



CAS: 1254944-66-5
CDCl₃, 400 MHz



8 7 6 5 4 3 2 1 0 PPM