

7.759
7.739
7.733
7.531
7.525
7.520
7.508
7.504
7.497
7.389
7.384
7.372
7.367
7.358
7.099
6.938
6.929
6.924
6.912
6.906
4.893

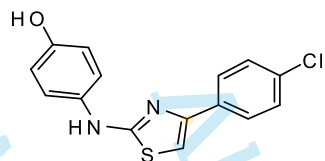
3.347
3.343
3.339
3.334
3.330

-0.000

Sample Name: SKI II-01

Chemical Formula: C₁₅H₁₁ClN₂OS

Molecular Weight: 302.78



CAS: 312636-16-1

CD₃OD, 400 MHz

2.06
2.03
2.00
0.51

10

8

6

4

2

0

PPM