

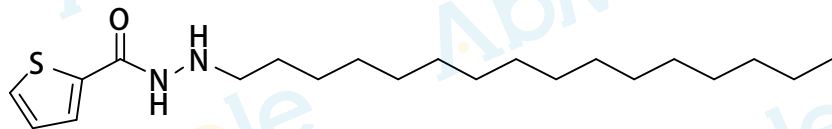
10.003
9.991

7.761
7.759
7.749
7.747
7.725
7.722
7.716
7.713
7.139
7.130
7.127
7.117

5.017
5.003

3.335
2.763
2.752
2.735
2.512
2.507
2.503
2.498
2.494
1.444
1.426
1.408
1.391
1.286
1.234
0.868
0.852
0.834
-0.000

Chemical Formula: C₂₁H₃₈N₂OS
Molecular Weight: 366.61



CAS: 2374313-54-7

DMSO-d₆, 400 MHz

Sample name: SIS17-01

0.98

2.07

1.00

0.98

2.18

2.09

3.08

26.25

10

8

6

4

2

0

PPM