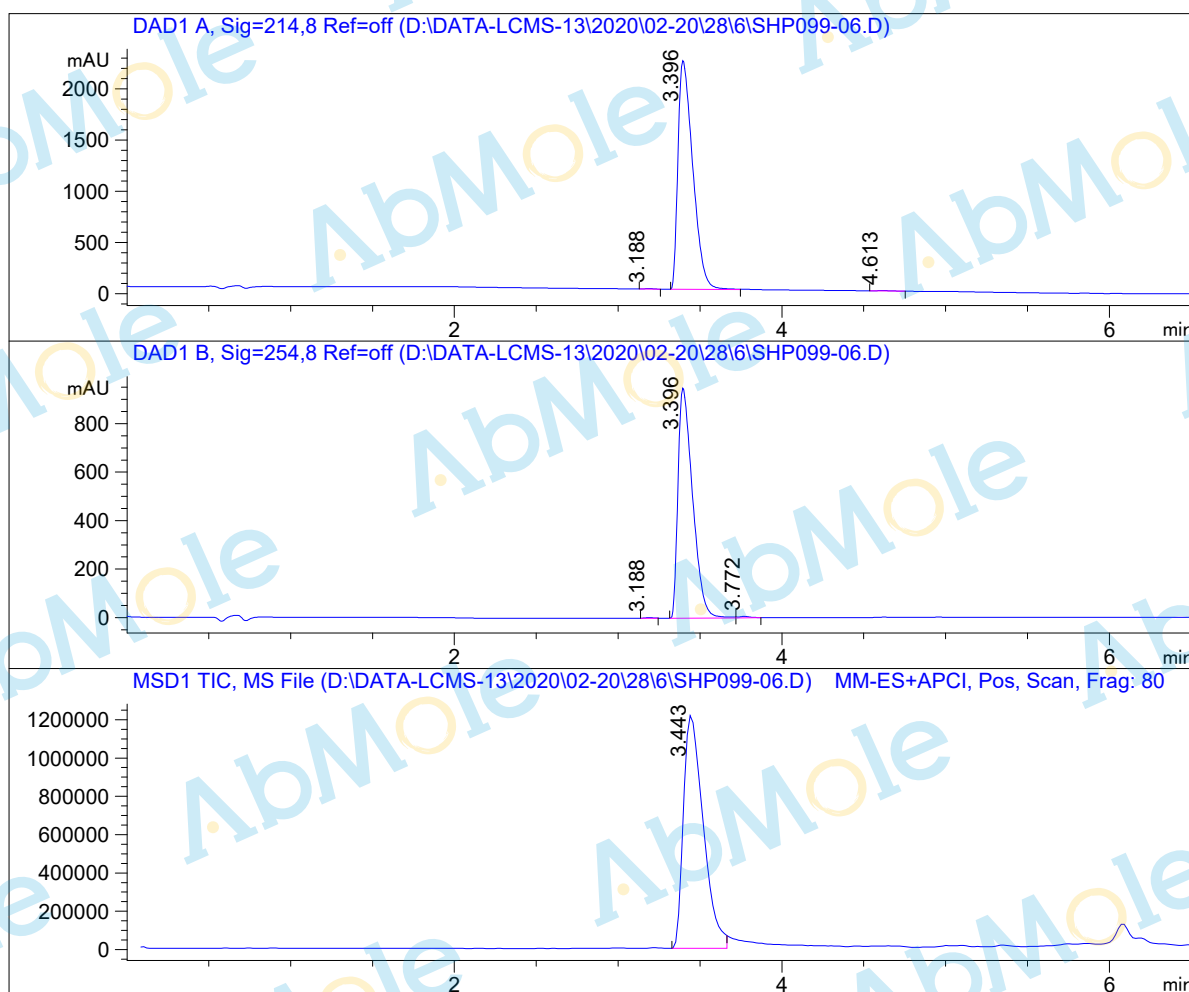


LCMS Report

Sample Name : SHP099-06
 Data File : D:\DATA-LCMS-13\2020\02-20\28\6\SHP099-06.D
 Injection Date : Fri, 28. Feb. 2020 Inj. Vol. : 5ul
 Acq Operator : LCMS-13 Location : Vial 46
 Acq. Method : D:\data-lcms-13\2020\02-20\28\6\P-05-95.M
 Method Info. : column:Xbridge C18 5um 4.6*30mm ;mobile phase:B (ACN)
 A(0.02%NH4Ac); gradient(B%)!as Acq.Method above



Integration Results

Signal 1: DAD1 A, Sig=214,8 Ref=off

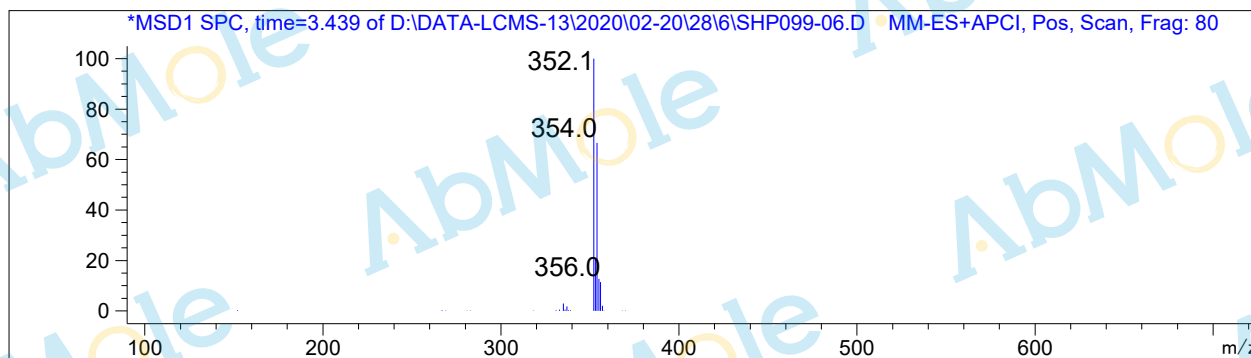
#	R.T.	Type	Height	Height%	Width	Area	Area %
1	3.188	MF	6.127	0.273	0.054	19.911	0.142
2	3.396	BB	2235.445	99.548	0.097	14007.556	99.681
3	4.613	BB	4.025	0.179	0.092	24.858	0.177

Signal 2: DAD1 B, Sig=254,8 Ref=off

#	R.T.	Type	Height	Height%	Width	Area	Area %
1	3.188	FM	2.516	0.262	0.053	8.053	0.136
2	3.396	MF	951.663	99.103	0.103	5867.849	99.361
3	3.772	FM	6.101	0.635	0.081	29.701	0.503

Signal 3: MSD1 TIC, MS File

#	R.T.	Type	Height	Height%	Width	Area	Area %
1	3.443	MM	1.224e+006	100.000	0.142	1.040e+007	100.000



*** End of Report ***