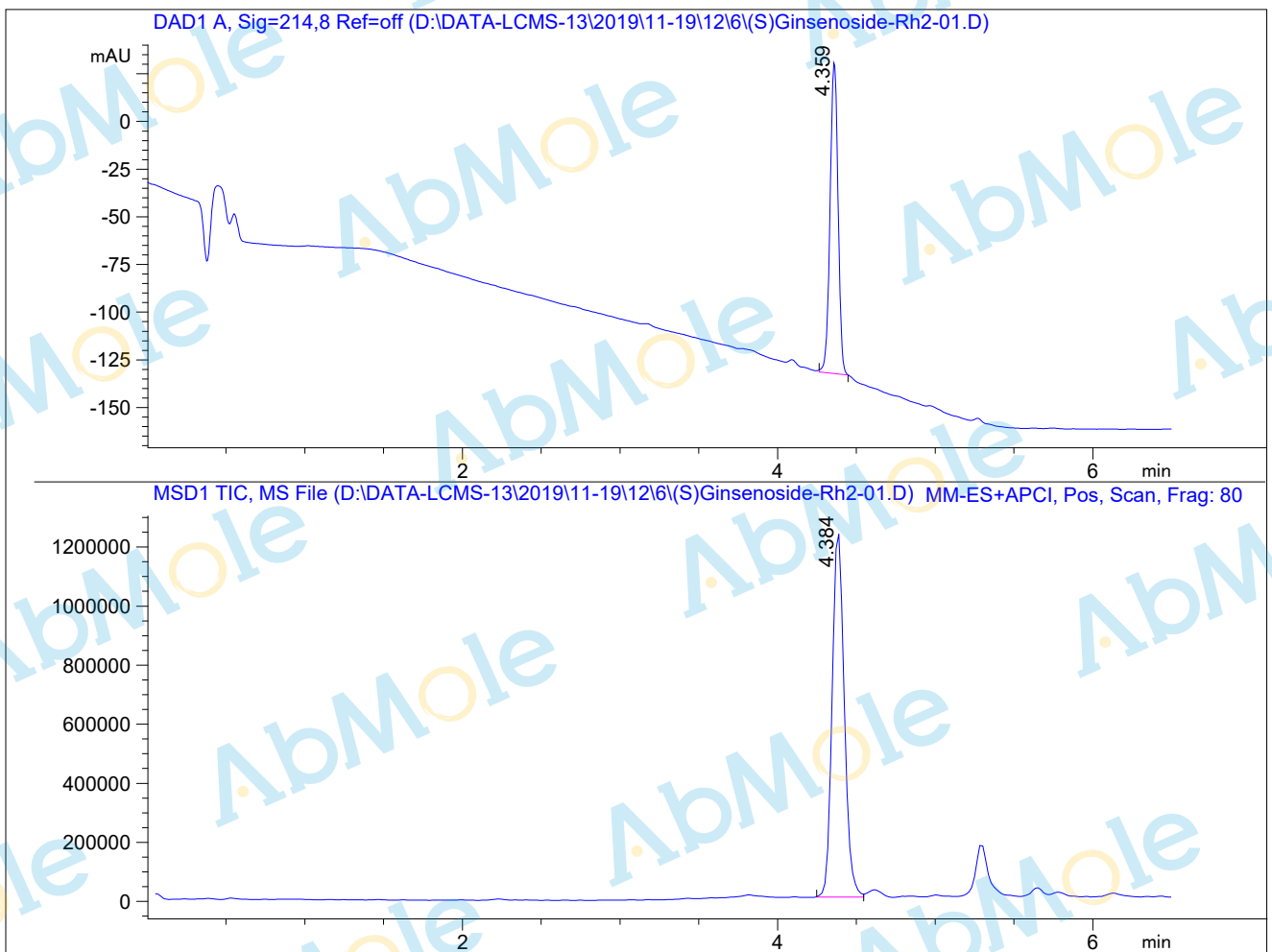


LC-MS Report

Sample Name : (S)Ginsenoside-Rh2-01
Data File : D:\DATA-LCMS-13\2019\11-19\12\6\ (S)Ginsenoside-Rh2-01.D
Injection Date : Tue, 12. Nov. 2019 Inj. Vol. : 10ul
Acq Operator : LCMS-13 Location : Vial 72
Acq. Method : D:\data-lcms-13\2019\11-19\12\6\P-05-95.M
Method Info. : column:C18;column size:4.6*50mm ;mobile phase:B (ACN)
A(0.02%NH4Ac); gradient(B%)!as Acq.Method above



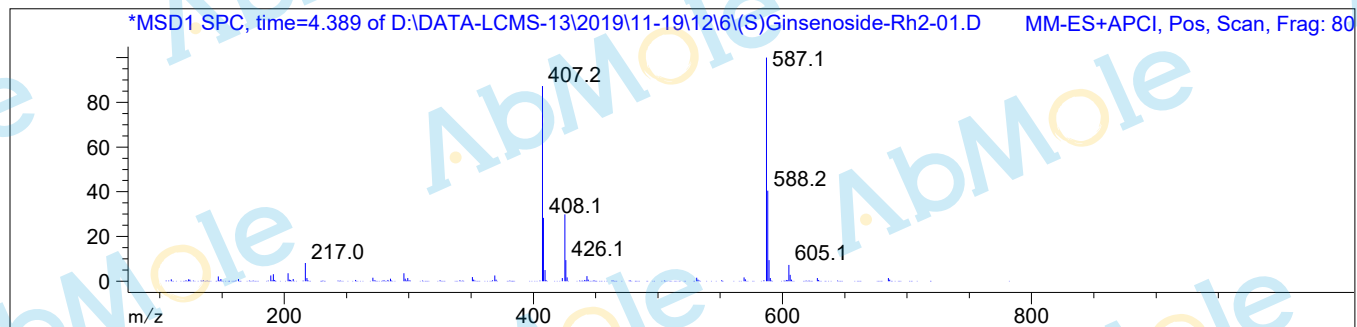
Integration Results

Signal 1: DAD1 A, Sig=214,8 Ref=off

| # | R.T. | Type | Height | Height% | Width | Area | Area % |
|---|-------|------|---------|---------|-------|---------|---------|
| 1 | 4.359 | MM | 164.240 | 100.000 | 0.058 | 573.545 | 100.000 |

Signal 2: MSD1 TIC, MS File

| # | R.T. | Type | Height | Height% | Width | Area | Area % |
|---|-------|------|------------|---------|-------|------------|---------|
| 1 | 4.384 | BV | 1.243e+006 | 100.000 | 0.083 | 6.614e+006 | 100.000 |



*** End of Report ***