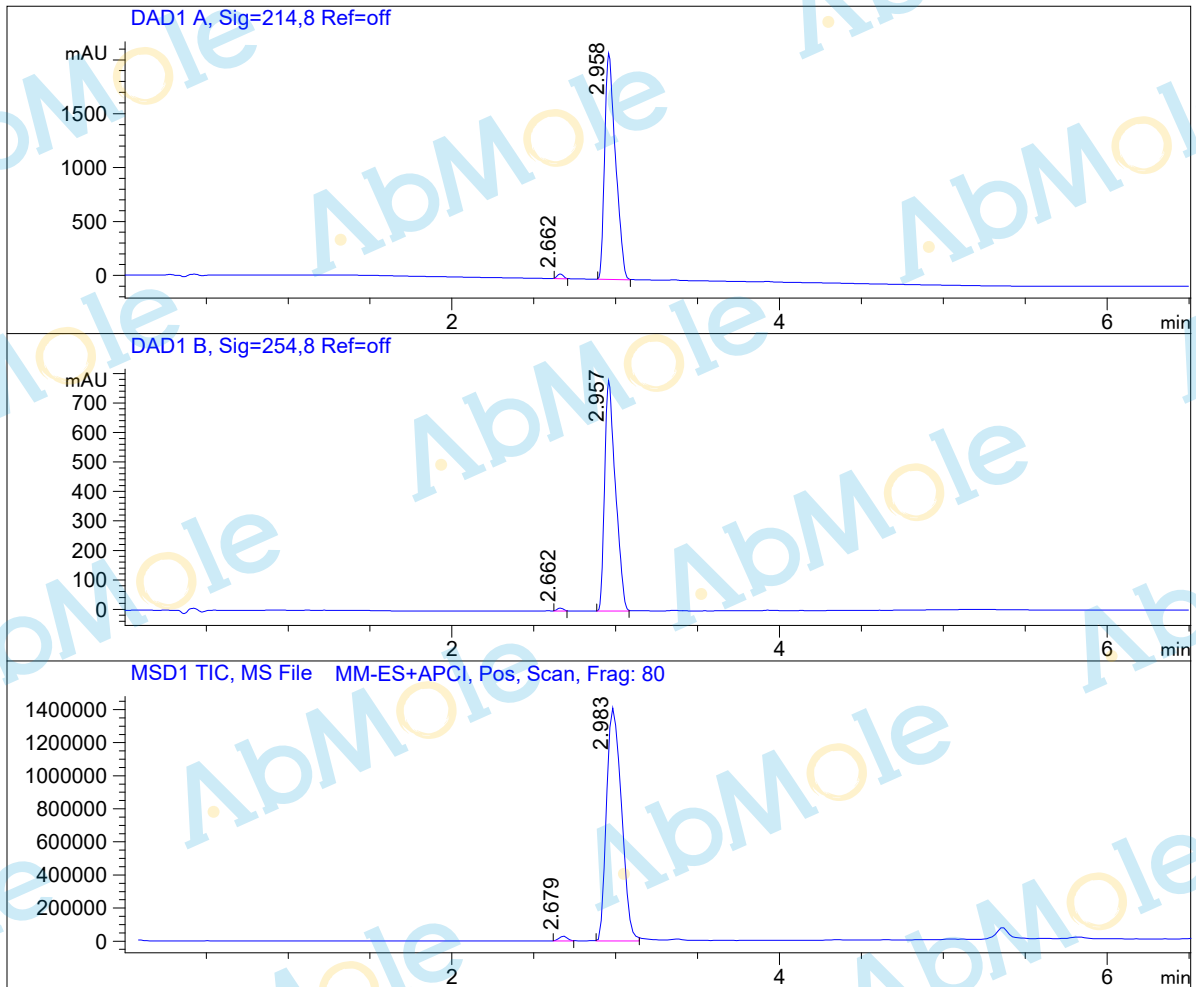


# LC-MS Report

Sample Name : Ro-46-2005-01  
Data File : D:\DATA-LCMS-13\2019\11-19\29\4\Ro-46-2005-01.D  
Injection Date : Fri, 29. Nov. 2019 Inj. Vol. : 3ul  
Acq Operator : LCMS-13 Location : Vial 69  
Acq. Method : D:\data-lcms-13\2019\11-19\29\4\P-05-95.M  
Method Info. : column:C18;column size:4.6\*50mm ;mobile phase:B (ACN)  
A(0.02%NH4Ac); gradient(B%)!as Acq.Method above



## Integration Results

Signal 1: DAD1 A, Sig=214,8 Ref=off

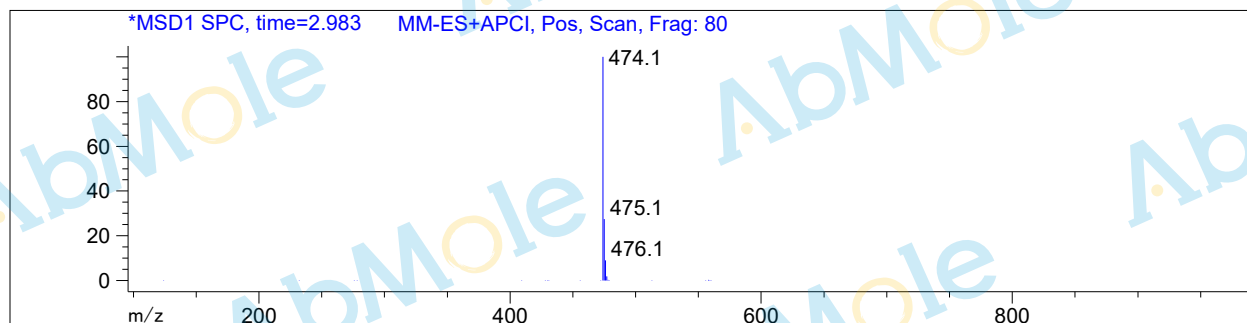
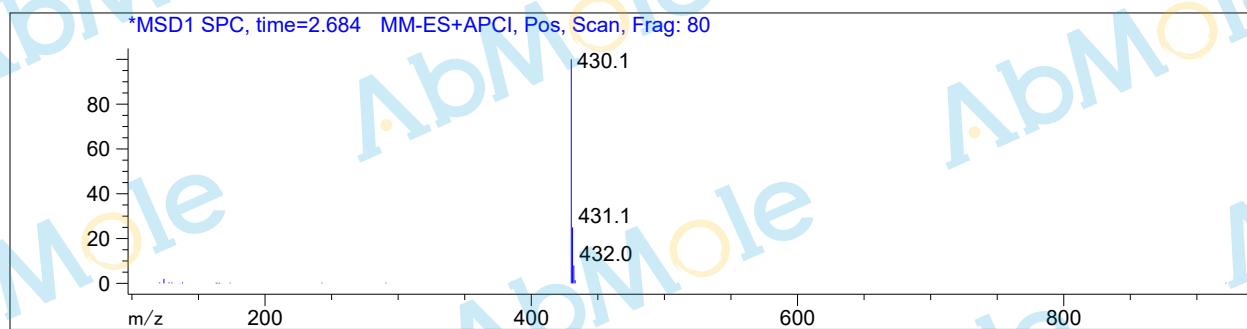
#	R.T.	Type	Height	Height%	Width	Area	Area %
1	2.662	MM	42.990	2.000	0.043	110.182	1.132
2	2.958	MF	2106.221	98.000	0.076	9623.027	98.868

Signal 2: DAD1 B, Sig=254,8 Ref=off

#	R.T.	Type	Height	Height%	Width	Area	Area %
1	2.662	MM	9.485	1.195	0.042	23.939	0.664
2	2.957	MF	783.923	98.805	0.076	3580.722	99.336

Signal 3: MSD1 TIC, MS File

#	R.T.	Type	Height	Height%	Width	Area	Area %
1	2.679	MM	28869.660	1.994	0.059	101356.961	1.121
2	2.983	MM	1.419e+006	98.006	0.105	8.942e+006	98.879



\*\*\* End of Report \*\*\*