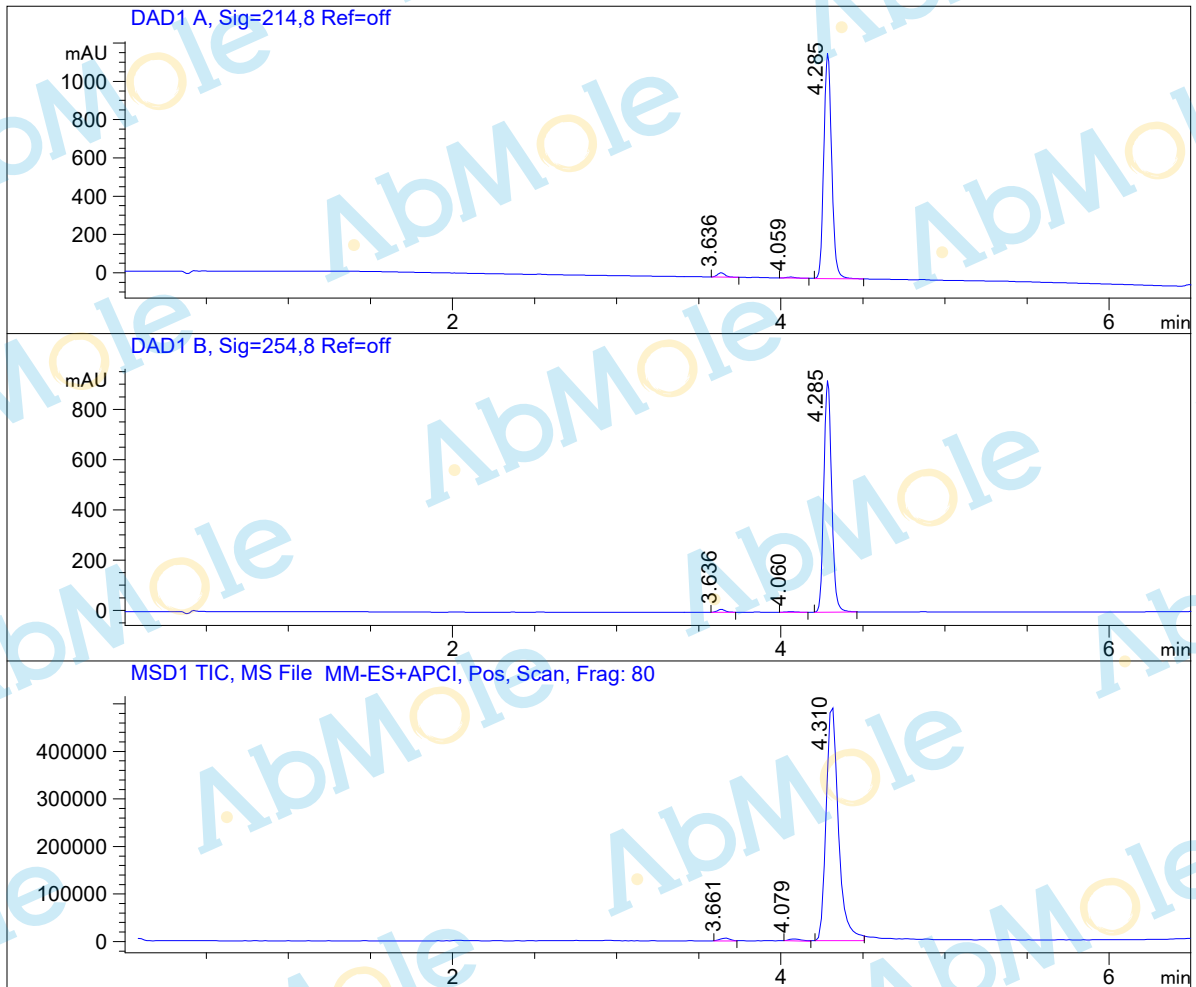


LC-MS Report

Sample Name : Reversine-02
Data File : D:\DATA-LCMS-13\2020\01-20\14\4\Reversine-02.D
Injection Date : Tue, 14. Jan. 2020 Inj. Vol. : 5ul
Acq Operator : LCMS-13 Location : Vial 52
Acq. Method : D:\data-lcms-13\2020\01-20\14\4\P-05-60.M
Method Info. : column:Xbridge C18 5um 4.6*30mm ;mobile phase:B (ACN)
A(0.02%NH4Ac); gradient(B%)!as Acq.Method above



Integration Results

Signal 1: DAD1 A, Sig=214,8 Ref=off

#	R.T.	Type	Height	Height%	Width	Area	Area %
1	3.636	BB	22.740	1.886	0.049	72.834	1.819
2	4.059	BB	5.142	0.427	0.058	19.495	0.487
3	4.285	BB	1177.622	97.687	0.053	3910.961	97.694

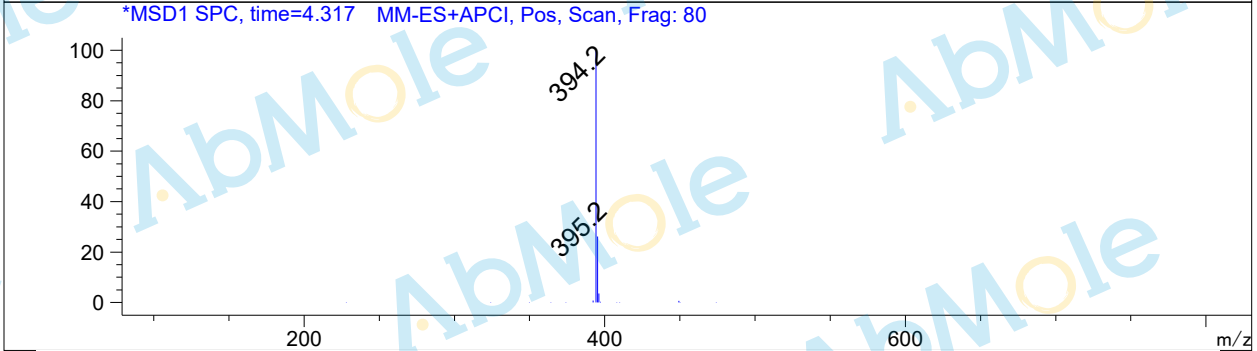
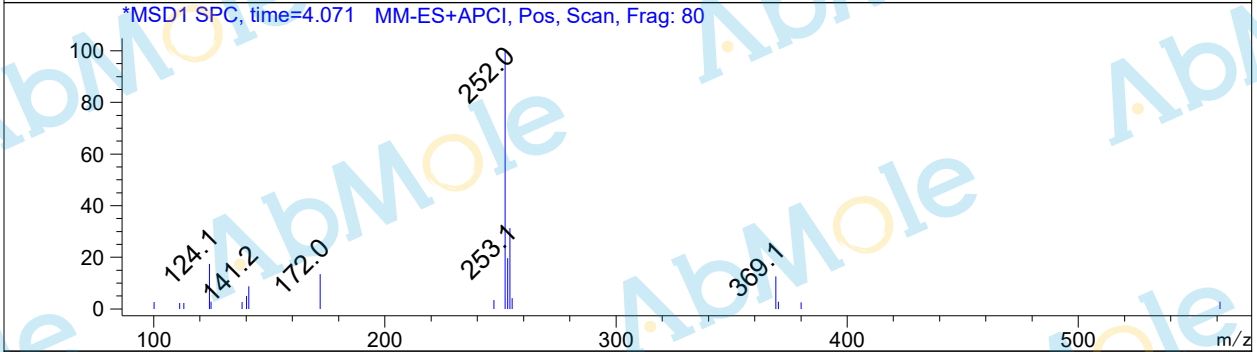
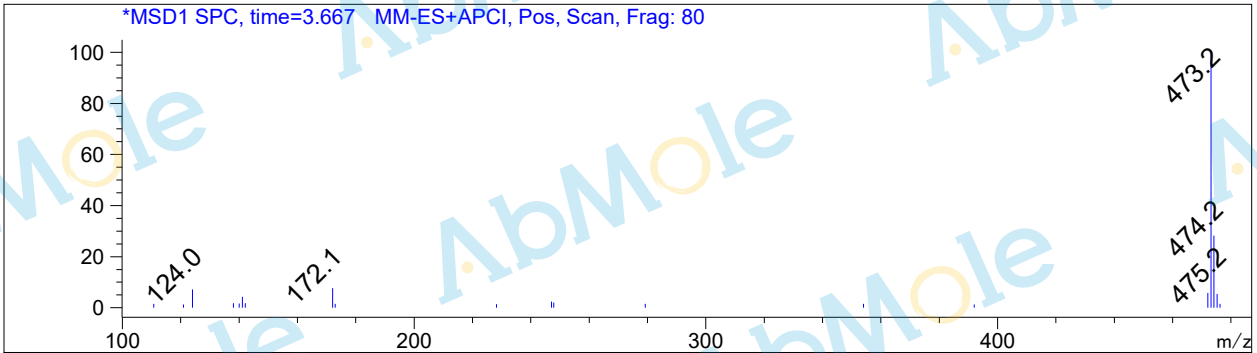
#	R.T.	Type	Height	Height%	Width	Area	Area %
---	------	------	--------	---------	-------	------	--------

Signal 2: DAD1 B, Sig=254,8 Ref=off

#	R.T.	Type	Height	Height%	Width	Area	Area %
1	3.636	BB	11.541	1.233	0.049	36.694	1.185
2	4.060	BB	2.250	0.240	0.058	8.532	0.275
3	4.285	BB	922.204	98.527	0.053	3051.957	98.540

Signal 3: MSD1 TIC, MS File

#	R.T.	Type	Height	Height%	Width	Area	Area %
1	3.661	MM	5874.602	1.138	0.074	26013.768	0.993
2	4.079	MM	4230.867	0.820	0.090	22869.461	0.873
3	4.310	MM	506147.188	98.043	0.085	2.570e+006	98.133



*** End of Report ***