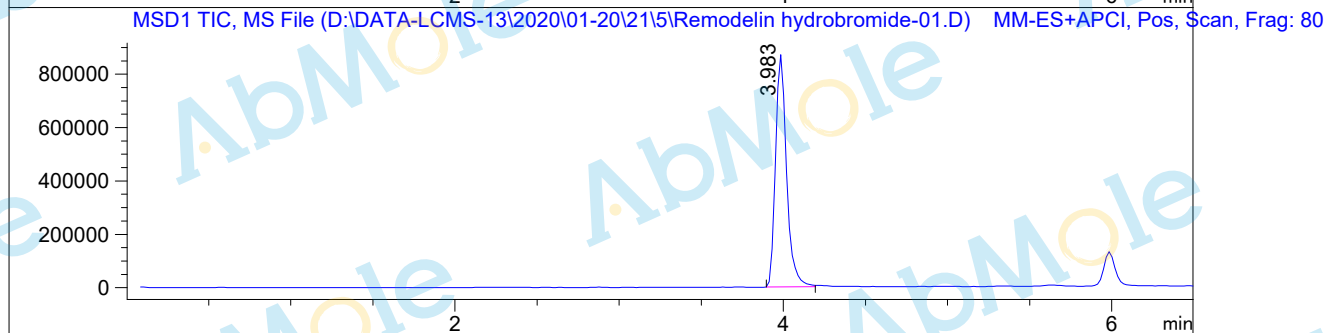
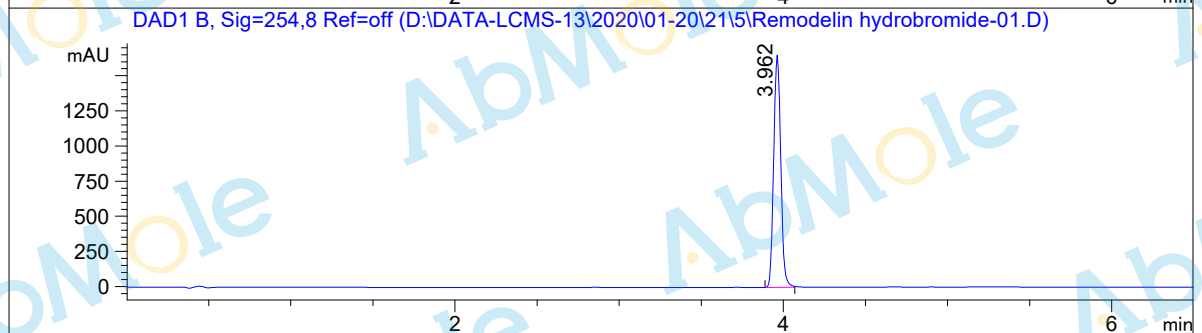
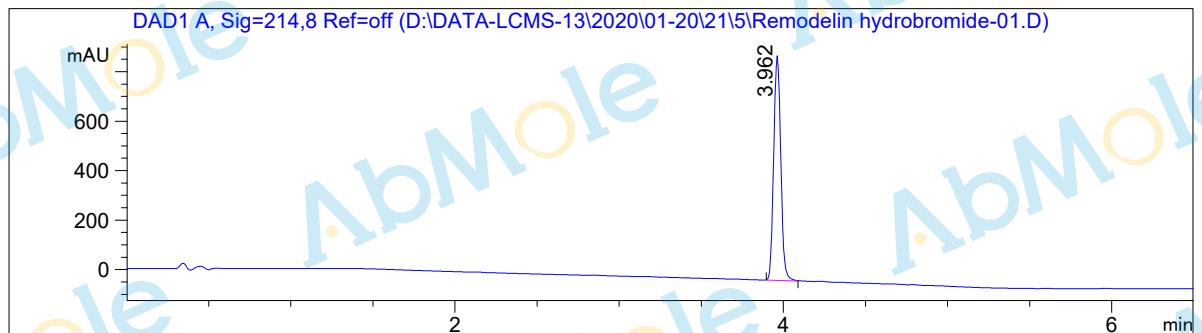


LC - M S Report

Sample Name : Remodelin hydrobromide-01
Data File : D:\DATA-LCMS-13\2020\01-20\21\5\Remodelin hydrobromide-01.D
Injection Date : Tue, 21. Jan. 2020 Inj. Vol. : 3ul
Acq Operator : LCMS-13 Location : Vial 46
Acq. Method : D:\data-lcms-13\2020\01-20\21\5\P-05-95.M
Method Info. : column:Xbridge C18 5um 4.6*30mm ;mobile phase:B (ACN)
A(0.02%NH4Ac); gradient(B%)!as Acq.Method above



Integration Results

Signal 1: DAD1 A, Sig=214,8 Ref=off

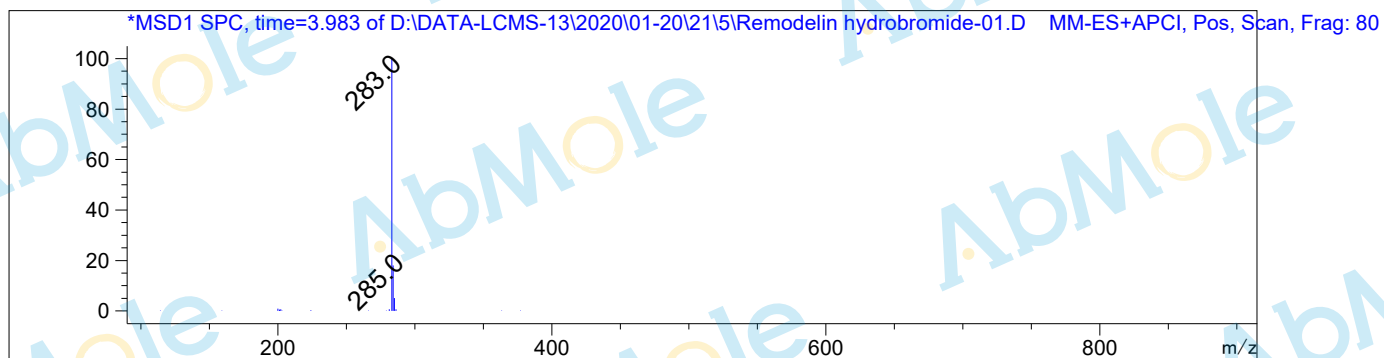
#	R.T.	Type	Height	Height%	Width	Area	Area %
1	3.962	MF	912.329	100.000	0.050	2736.146	100.000

Signal 2: DAD1 B, Sig=254,8 Ref=off

#	R.T.	Type	Height	Height%	Width	Area	Area %
1	3.962	MF	1659.956	100.000	0.050	4978.324	100.000

Signal 3: MSD1 TIC, MS File

#	R.T.	Type	Height	Height%	Width	Area	Area %
1	3.983	BB	871054.250	100.000	0.070	4.079e+006	100.000



*** End of Report ***