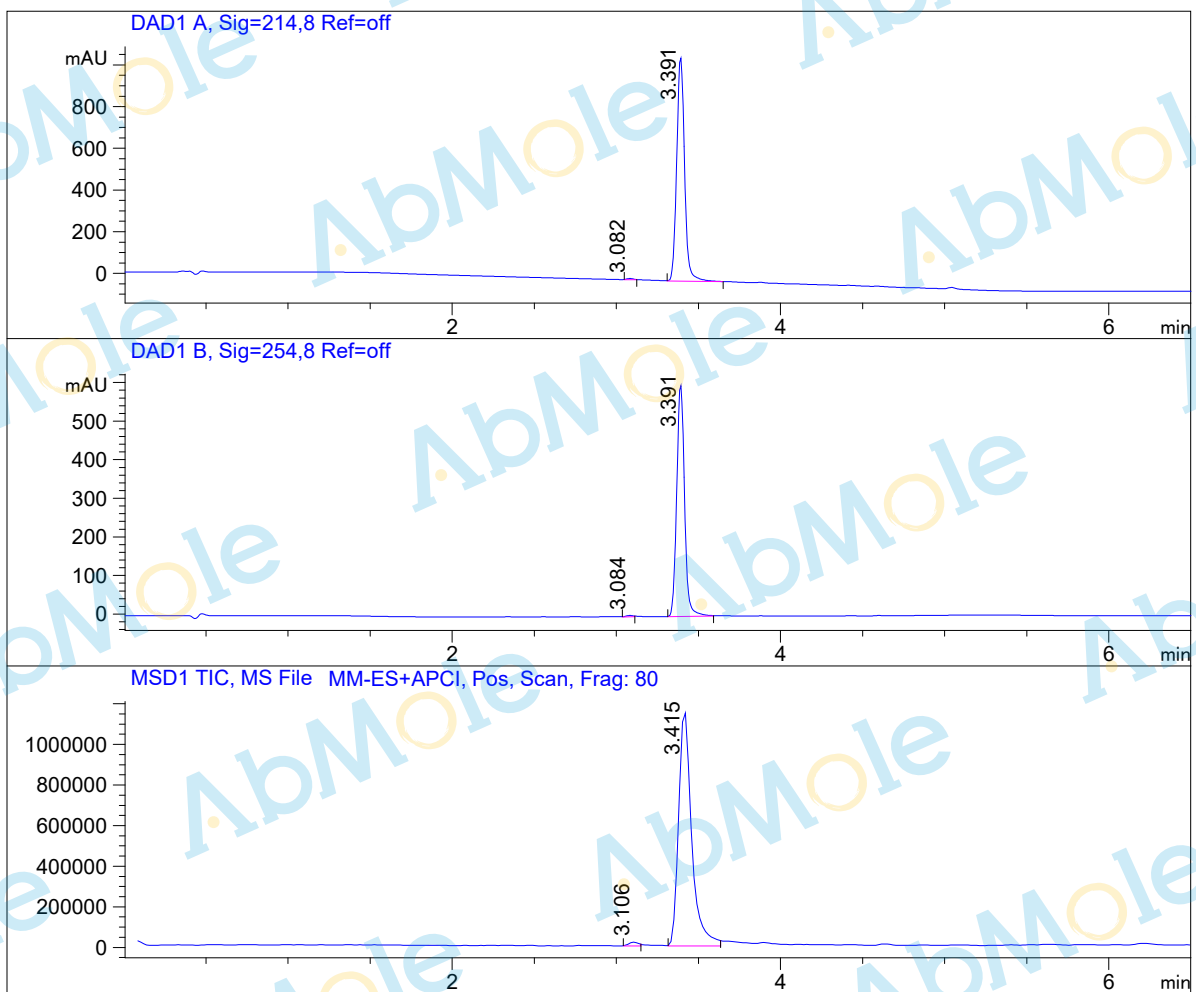


LC-MS Report

Sample Name : RMC-4550-01
Data File : C:\CHEM32\1\DATA\19\2 1\RMC-4550-01.D
Injection Date : Wed, 8. Jan. 2020 Inj. Vol. : 3ul
Acq Operator : LCMS-13 Location : Vial 81
Acq. Method : C:\Chem32\1\DATA\19\2 1\P-05-95.M
Method Info. : column:C18;column size:4.6*50mm ;mobile phase:B (ACN)
A(0.02%NH4Ac); gradient(B%)!as Acq.Method above



Integration Results

Signal 1: DAD1 A, Sig=214,8 Ref=off

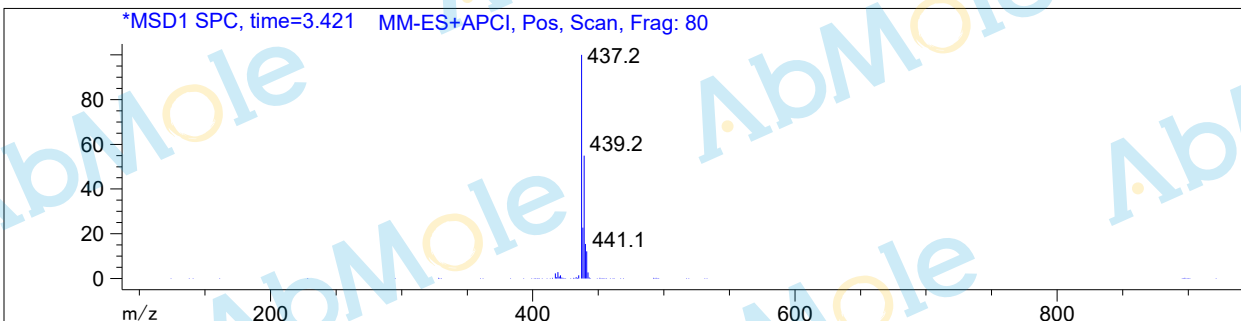
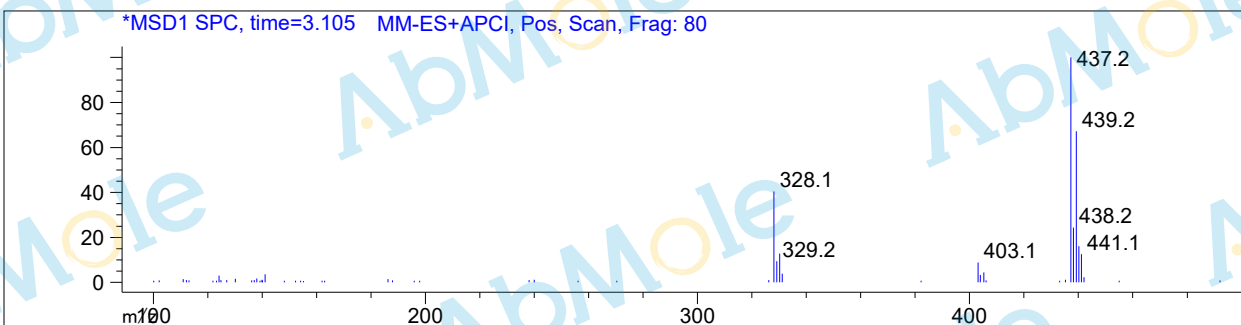
#	R.T.	Type	Height	Height%	Width	Area	Area %
1	3.082	MM	5.439	0.502	0.047	15.232	0.422
2	3.391	MM	1077.183	99.498	0.056	3597.807	99.578

Signal 2: DAD1 B, Sig=254,8 Ref=off

#	R.T.	Type	Height	Height%	Width	Area	Area %
1	3.084	MM	3.244	0.538	0.050	9.691	0.483
2	3.391	BB	600.095	99.462	0.053	1998.144	99.517

Signal 3: MSD1 TIC, MS File

#	R.T.	Type	Height	Height%	Width	Area	Area %
1	3.106	MM	18935.732	1.583	0.067	76470.008	1.174
2	3.415	MM	1.177e+006	98.417	0.091	6.435e+006	98.826



*** End of Report ***