

7.740
7.736
7.720
7.717
7.495
7.475
7.456
7.430
7.426
7.411
7.407

5.294
5.280
5.266

4.507
4.493

4.082
4.068
4.053

3.675
3.655
3.510

3.490
3.326
3.172

3.086
2.913
2.900

2.506
2.501
2.497
2.179

1.850
1.740
1.730

1.622
1.582
1.575

1.340
1.235
1.094

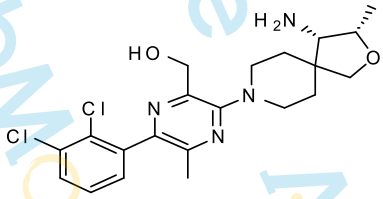
1.078
1.055
1.038

-0.001

Sample Name:RMC-4550-01

Chemical Formula: C₂₁H₂₆Cl₂N₄O₂

Molecular Weight: 437.36



CAS: 2172651-73-7

DMSO-d₆, 400 MHz

1.00

2.09

1.05

2.06

1.02

1.04

3.29

2.08

1.02

3.10

1.00

1.10

2.15

1.93

3.18

8 7 6 5 4 3 2 1 0 PPM