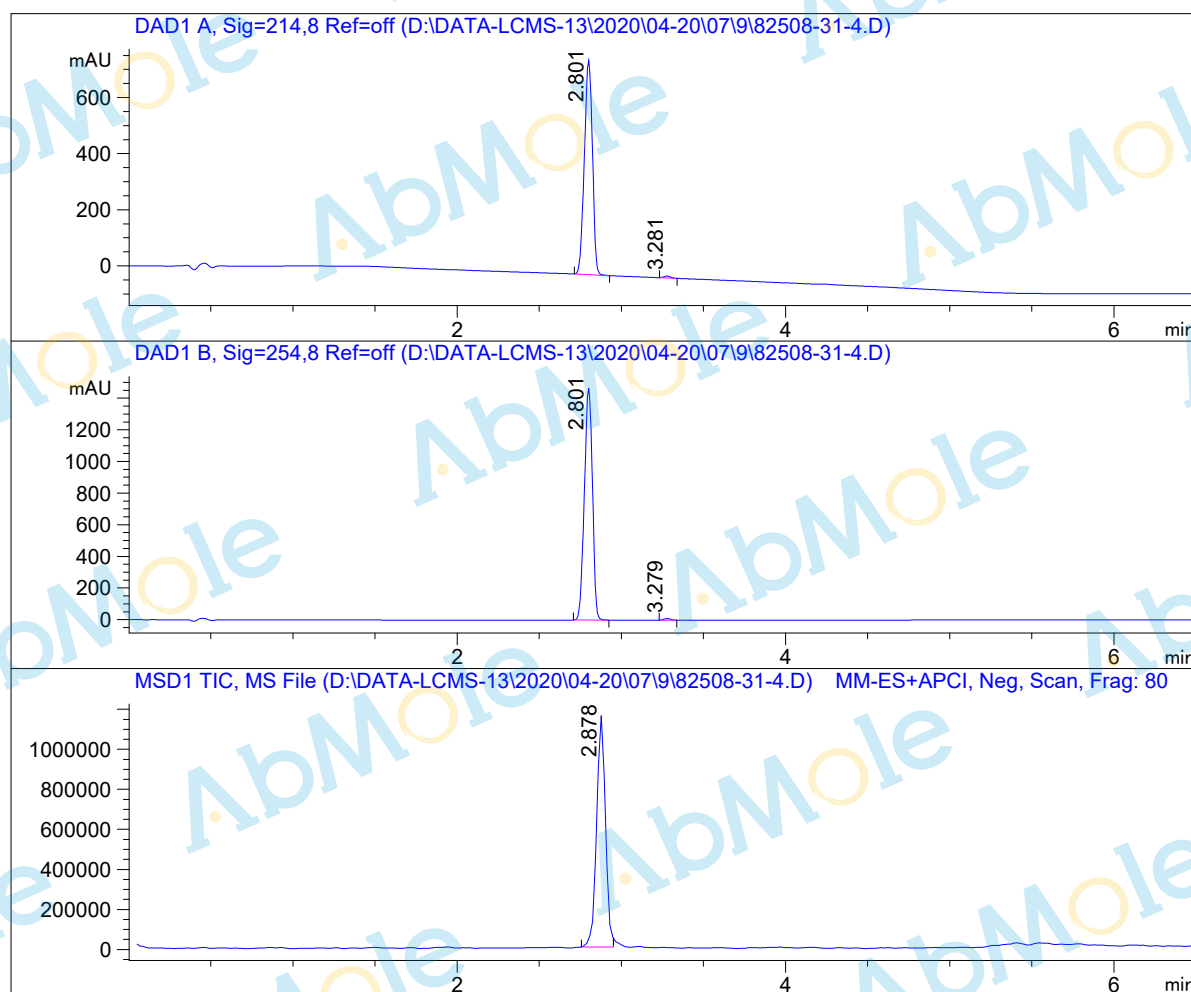


LCMS Report

Sample Name : Pseudolaric-Acid-B-01
Data File : D:\DATA-LCMS-13\2020\04-20\07\9\82508-31-4.D
Injection Date : Tue, 7. Apr. 2020 Inj. Vol. : 3ul
Acq Operator : LCMS-13 Location : Vial 81
Acq. Method : D:\data-lcms-13\2020\04-20\07\9\N-05-95.M
Method Info. : column:Xbridge C18 5um 4.6*30mm ;mobile phase:B (ACN)
A(0.02%NH4Ac); gradient(B%)!as Acq.Method above



Integration Results

Signal 1: DAD1 A, Sig=214,8 Ref=off

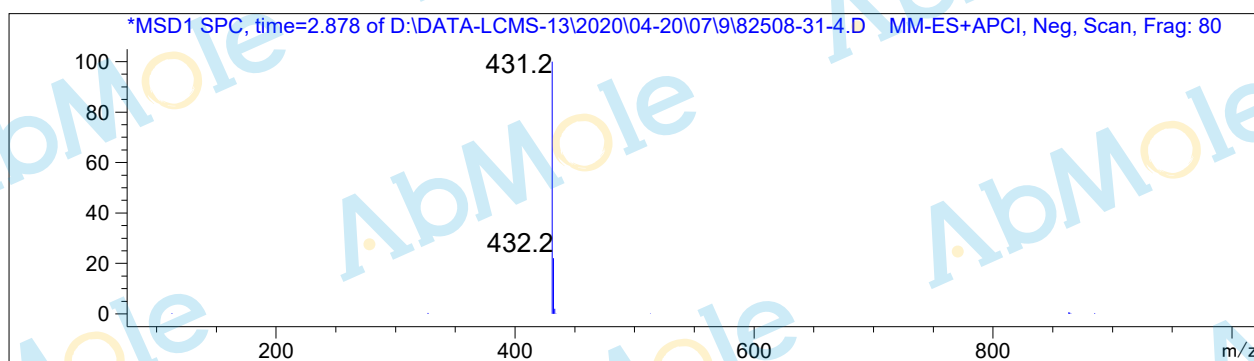
#	R.T.	Type	Height	Height%	Width	Area	Area %
1	2.801	MM	765.231	99.145	0.057	2604.586	99.258
2	3.281	FM	6.597	0.855	0.049	19.462	0.742

Signal 2: DAD1 B, Sig=254,8 Ref=off

#	R.T.	Type	Height	Height%	Width	Area	Area %
1	2.801	MM	1472.108	99.294	0.057	5009.840	99.402
2	3.279	FM	10.465	0.706	0.048	30.153	0.598

Signal 3: MSD1 TIC, MS File

#	R.T.	Type	Height	Height%	Width	Area	Area %
1	2.878	MM	1.180e+006	100.000	0.061	4.339e+006	100.000



*** End of Report ***