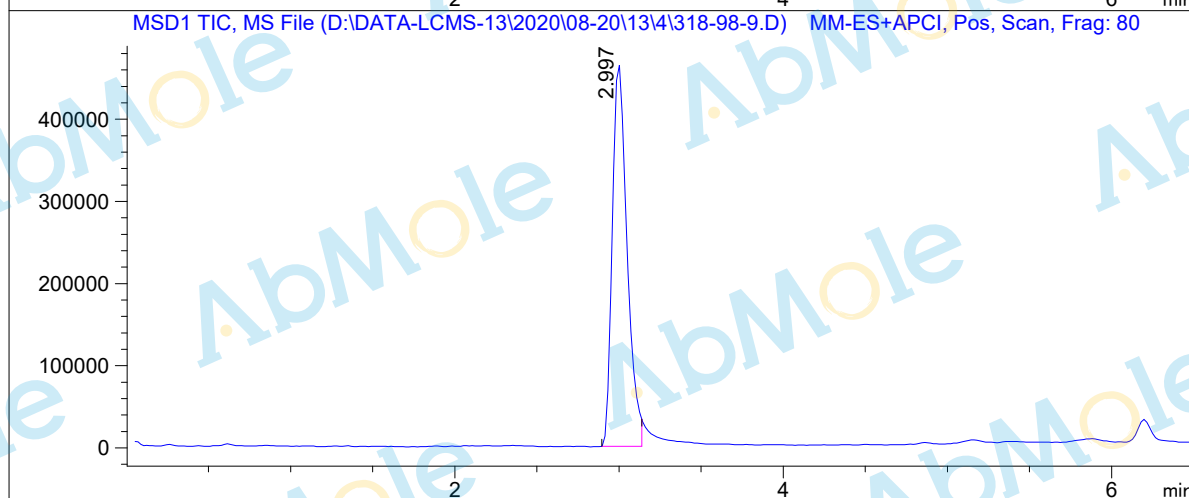
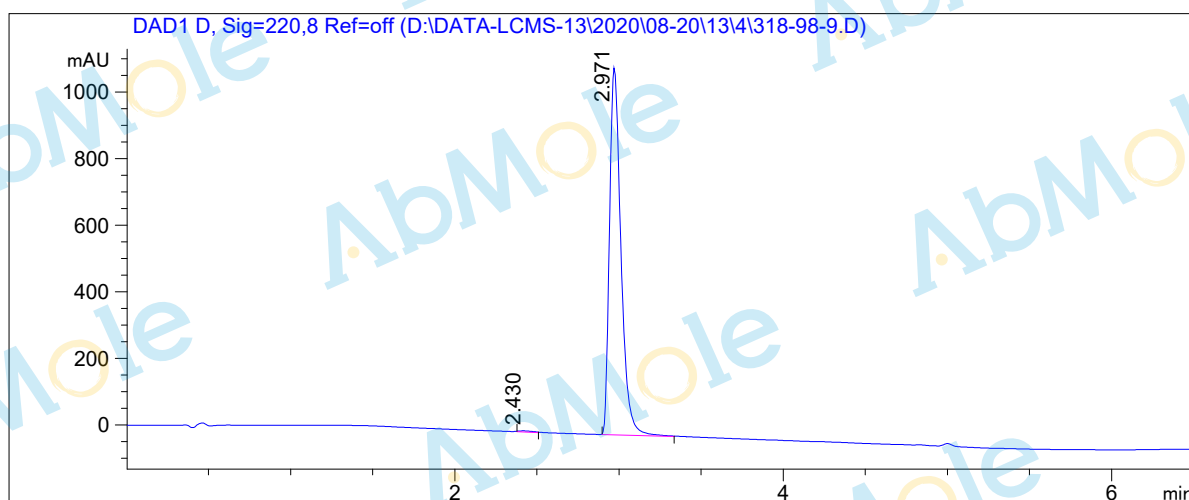


LCMS Report

Sample Name : Propranolol hydrochloride-01
Data File : D:\DATA-LCMS-13\2020\08-20\13\4\318-98-9.D
Injection Date : Thu, 13. Aug. 2020 Inj. Vol. : 2ul
Acq Operator : LCMS-13 Location : Vial 51
Acq. Method : D:\data-lcms-13\2020\08-20\13\4\P-05-95.M
Method Info. : column:Xbridge C18 5um 4.6*50mm ;mobile phase:B (ACN)
A(0.02%NH4Ac); gradient(B%)!as Acq.Method above



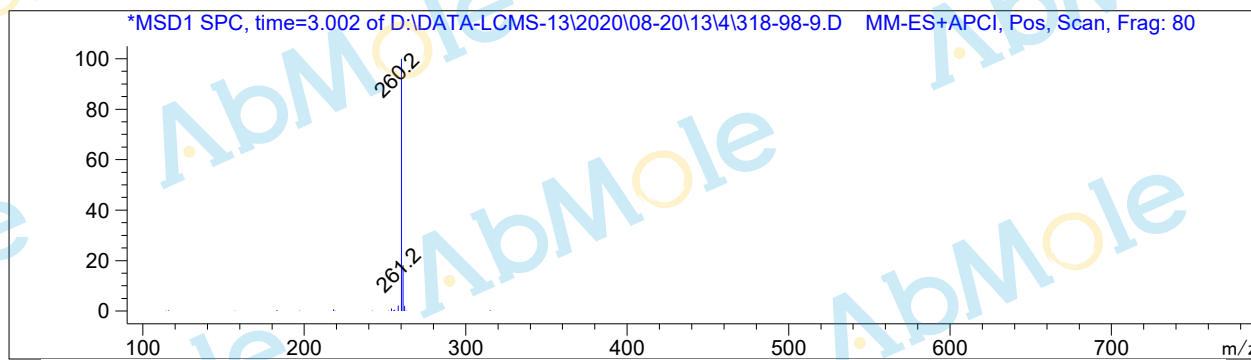
Integration Results

Signal 1: DAD1 D, Sig=220,8 Ref=off

#	R.T.	Type	Height	Height%	Width	Area	Area %
1	2.430	FM	3.398	0.307	0.097	19.798	0.369
2	2.971	BB	1101.734	99.693	0.075	5346.792	99.631

Signal 2: MSD1 TIC, MS File

#	R.T.	Type	Height	Height%	Width	Area	Area %
1	2.997	MM	470127.750	100.000	0.104	2.931e+006	100.000



*** End of Report ***