

8.983
8.976
8.657
8.650
8.276
8.257
8.254
7.892
7.888
7.870
7.559
7.545
7.543
7.534
7.528
7.522
7.511
7.489
7.449
7.430
7.410
6.991
6.972
6.012
5.999

4.396
4.386
4.375
4.179
4.167
3.403
3.388
3.373
3.358
3.334
3.281
3.252
3.230
3.116
3.091
2.502

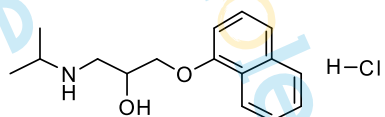
1.303
1.288
1.272

-0.001

Sample Name: Propranolol hydrochloride-01

Chemical Formula: C₁₆H₂₂ClNO₂

Molecular Weight: 295.80



CAS: 318-98-9

DMSO-d₆, 400 MHz

0.94
0.94
1.01
1.02
3.07
1.01
1.01
1.01
1.00
1.03
2.03
1.02
1.05
1.07

6.29

10

8

6

4

2

0 PPM