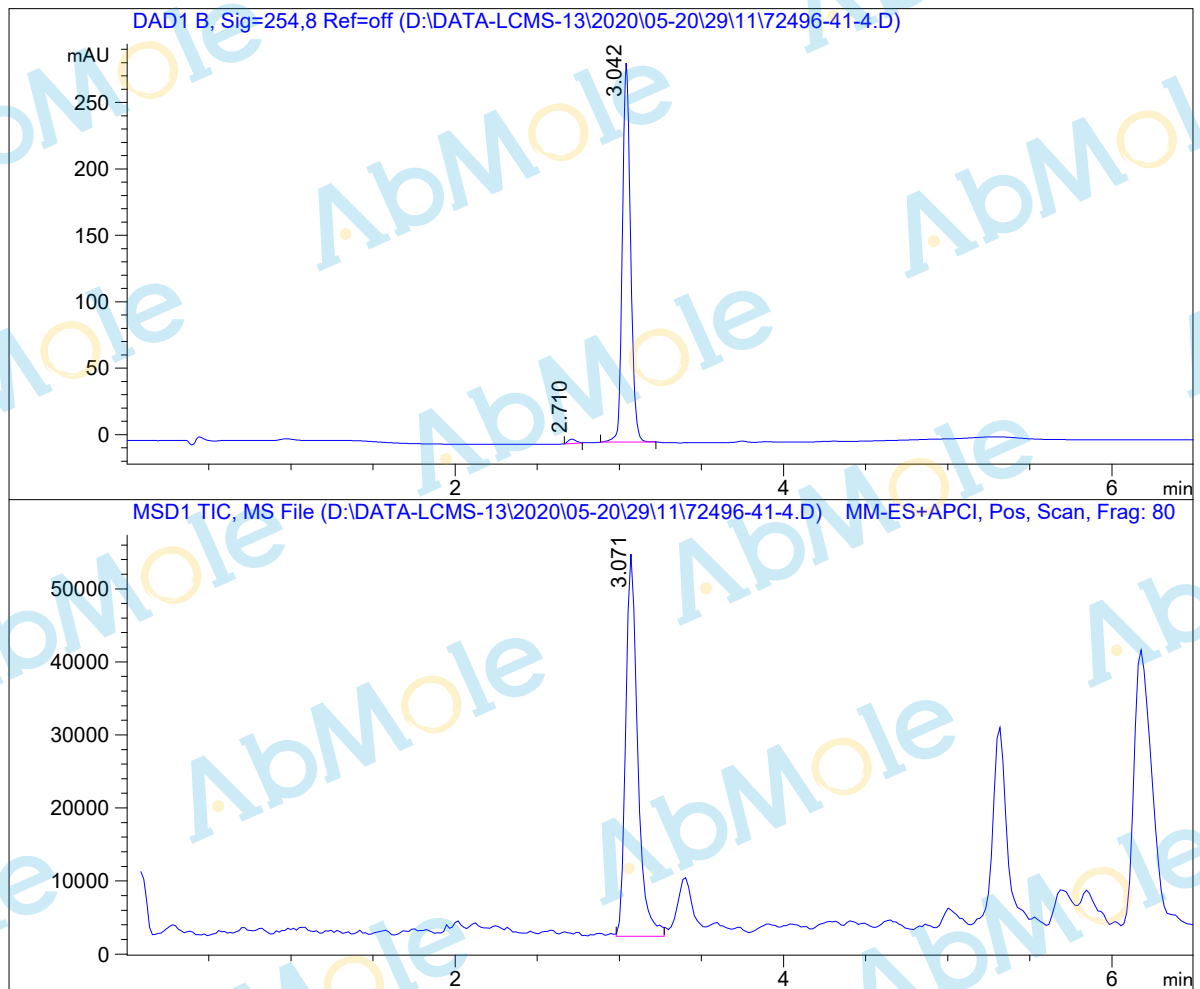


LCMS Report

Sample Name : Pirarubicin-02
Data File : D:\DATA-LCMS-13\2020\05-20\29\11\72496-41-4.D
Injection Date : Mon, 1. Jun. 2020 Inj. Vol. : 2ul
Acq Operator : LCMS-13 Location : Vial 42
Acq. Method : D:\data-lcms-13\2020\05-20\29\11\P-05-95-TFA.M
Method Info. : column:Xbridge C18 5um 4.6*50mm ;mobile phase:B (ACN)
A(0.05%TFA) ; gradient(B%)!as Acq.Method above



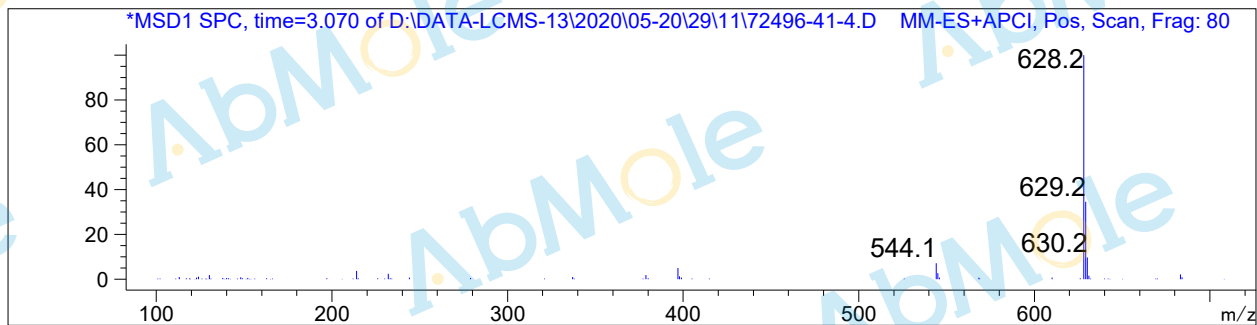
Integration Results

Signal 1: DAD1 B, Sig=254,8 Ref=off

#	R.T.	Type	Height	Height%	Width	Area	Area %
1	2.710	MM	3.543	1.222	0.057	12.168	1.218
2	3.042	MM	286.496	98.778	0.057	986.965	98.782

Signal 2: MSD1 TIC, MS File

#	R.T.	Type	Height	Height%	Width	Area	Area %
1	3.071	MM	52938.645	100.000	0.084	266099.938	100.000



*** End of Report ***