

11.579

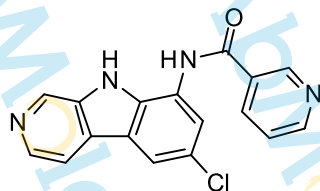
10.680
9.270
9.266
8.983
8.844
8.840
8.832
8.828
8.443
8.438
8.433
8.423
8.418
8.414
8.399
8.386
8.317
8.313
8.199
8.186
7.808
7.803
7.667
7.655
7.647
7.635

3.332

2.511
2.506
2.502
2.498
2.493

-0.001

Sample Name: PS-1145-01
Chemical Formula: C₁₇H₁₁ClN₄O
Molecular Weight: 322.75



CAS: 431898-65-6

DMSO-d₆, 400MHz

1.00

1.00

1.01

1.01

1.00

12 10 8 6 4 2 0 PPM