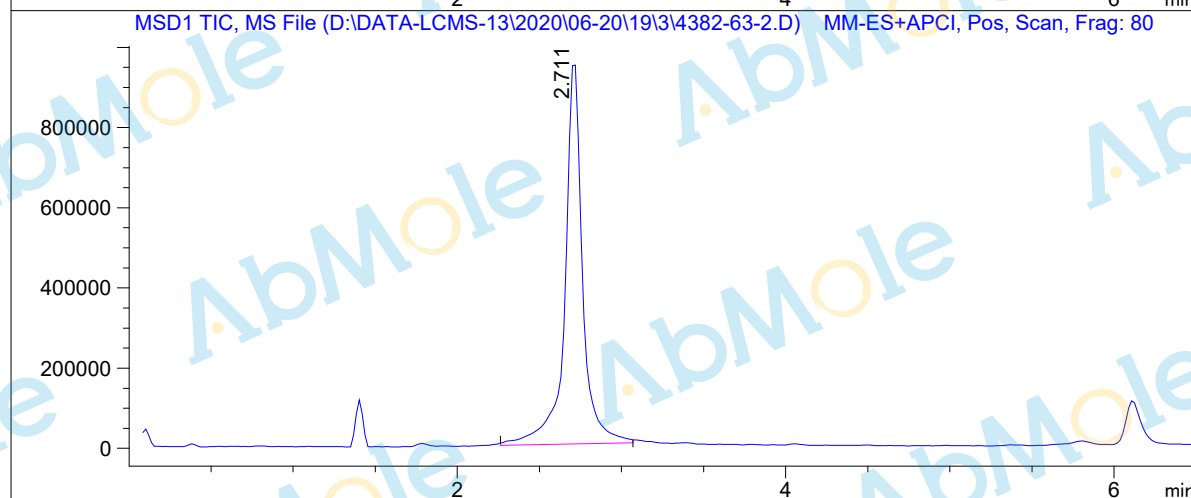
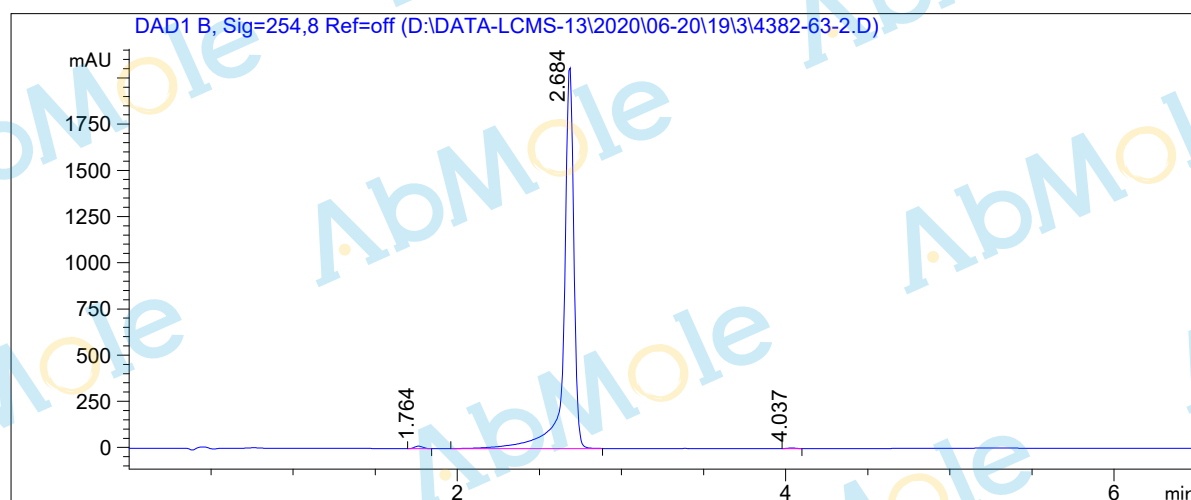


# LCMS Report

Sample Name : PFK15-01  
Data File : D:\DATA-LCMS-13\2020\06-20\19\3\4382-63-2.D  
Injection Date : Fri, 19. Jun. 2020 Inj. Vol. : 5ul  
Acq Operator : LCMS-13 Location : Vial 41  
Acq. Method : D:\data-lcms-13\2020\06-20\19\3\P-05-95-TFA.M  
Method Info. : column:Xbridge C18 5um 4.6\*50mm ;mobile phase:B (ACN)  
A(0.05%TFA) ; gradient(B%)!as Acq.Method above



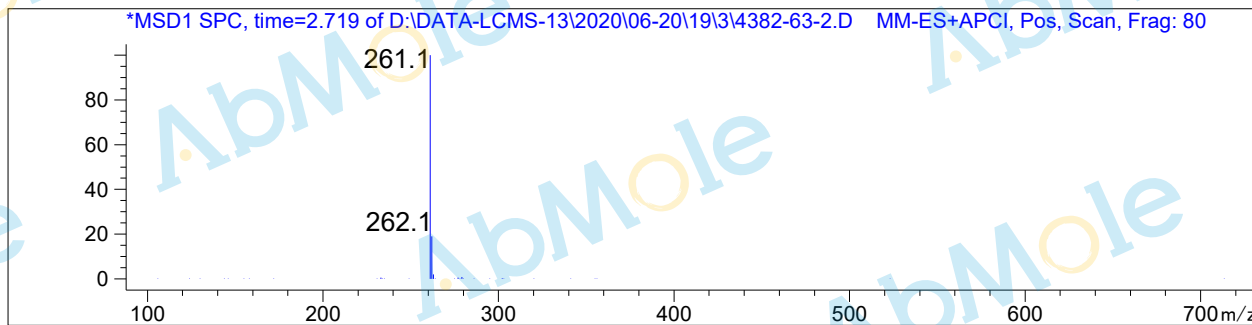
## Integration Results

Signal 1: DAD1 B, Sig=254,8 Ref=off

#	R.T.	Type	Height	Height%	Width	Area	Area %
1	1.764	FM	14.146	0.674	0.060	50.754	0.576
2	2.684	MM	2081.213	99.156	0.070	8747.611	99.278
3	4.037	FM	3.575	0.170	0.060	12.821	0.146

Signal 2: MSD1 TIC, MS File

#	R.T.	Type	Height	Height%	Width	Area	Area %
1	2.711	BB	966411.313	100.000	0.108	7.164e+006	100.000



\*\*\* End of Report \*\*\*