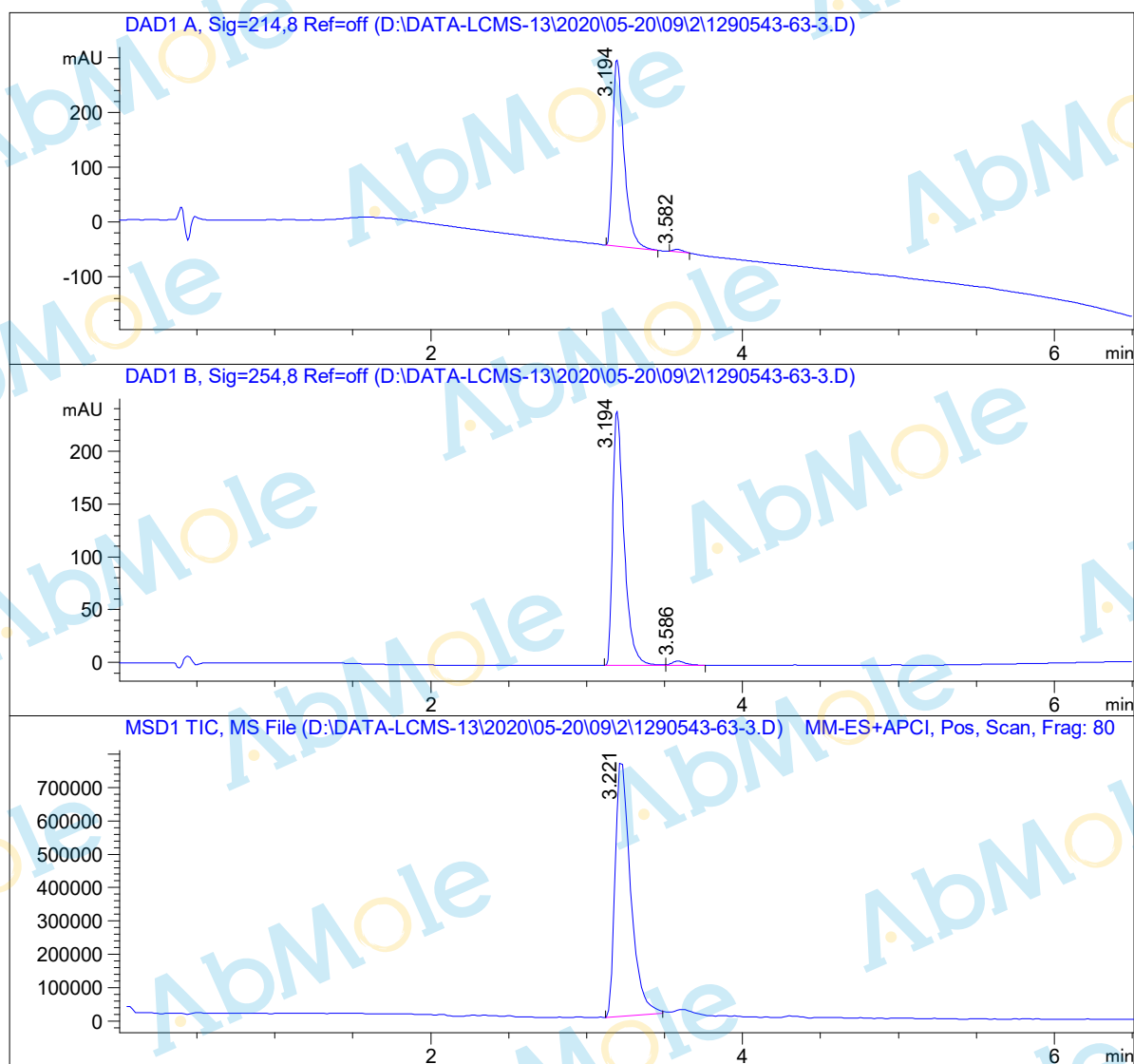


# LCMS Report

Sample Name : PF-03084014-02  
Data File : D:\DATA-LCMS-13\2020\05-20\09\2\1290543-63-3.D  
Injection Date : Sat, 9. May. 2020 Inj. Vol. : 2ul  
Acq Operator : LCMS-13 Location : Vial 16  
Acq. Method : D:\data-lcms-13\2020\05-20\09\2\P-05-60-TFA.M  
Method Info. : column:Xbridge C18 5um 4.6\*50mm ;mobile phase:B(ACN),  
A(0.05%TFA) ; gradient(B%):as Acq.Method above



## Integration Results

Signal 1: DAD1 A, Sig=214,8 Ref=off

#	R.T.	Type	Height	Height%	Width	Area	Area %
1	3.194	MF	342.357	98.587	0.084	1732.128	98.753
2	3.582	MM	4.907	1.413	0.074	21.875	1.247

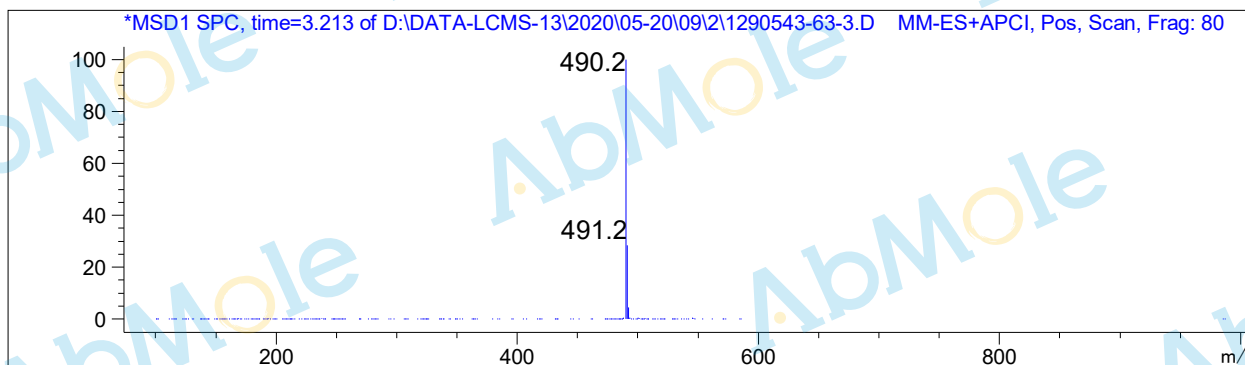
#	R.T.	Type	Height	Height%	Width	Area	Area %
---	------	------	--------	---------	-------	------	--------

Signal 2: DAD1 B, Sig=254,8 Ref=off

#	R.T.	Type	Height	Height%	Width	Area	Area %
1	3.194	MF	241.399	98.263	0.085	1226.373	97.839
2	3.586	FM	4.268	1.737	0.106	27.083	2.161

Signal 3: MSD1 TIC, MS File

#	R.T.	Type	Height	Height%	Width	Area	Area %
1	3.221	MF	784030.188	100.000	0.112	5.289e+006	100.000



\*\*\* End of Report \*\*\*