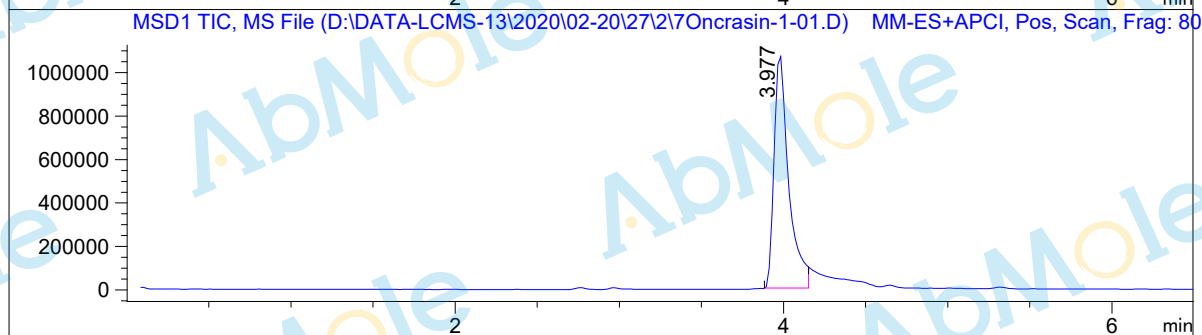
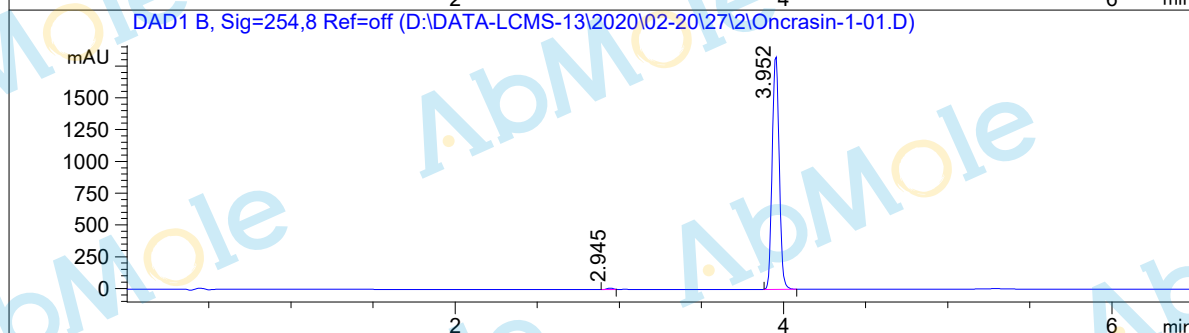
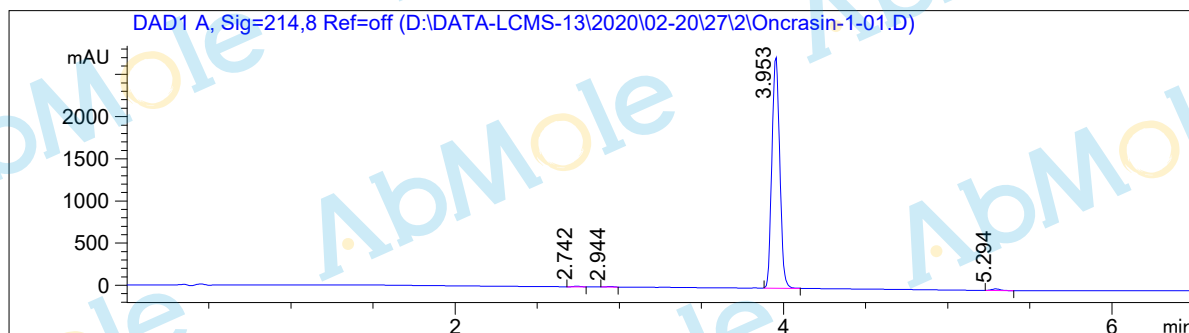


LCMS Report

Sample Name : Oncrasin-1-01
 Data File : D:\DATA-LCMS-13\2020\02-20\27\2\Oncrasin-1-01.D
 Injection Date : Thu, 27. Feb. 2020 Inj. Vol. : 3ul
 Acq Operator : LCMS-13 Location : Vial 25
 Acq. Method : D:\data-lcms-13\2020\02-20\27\2\P-05-95.M
 Method Info. : column:Ecclipse XDB-C18 5um 4.6*150mm ;mobile phase:B(ACN) A(0.02%NH4AC); gradient(B%)!as Acq.Method above



Integration Results

Signal 1: DAD1 A, Sig=214,8 Ref=off

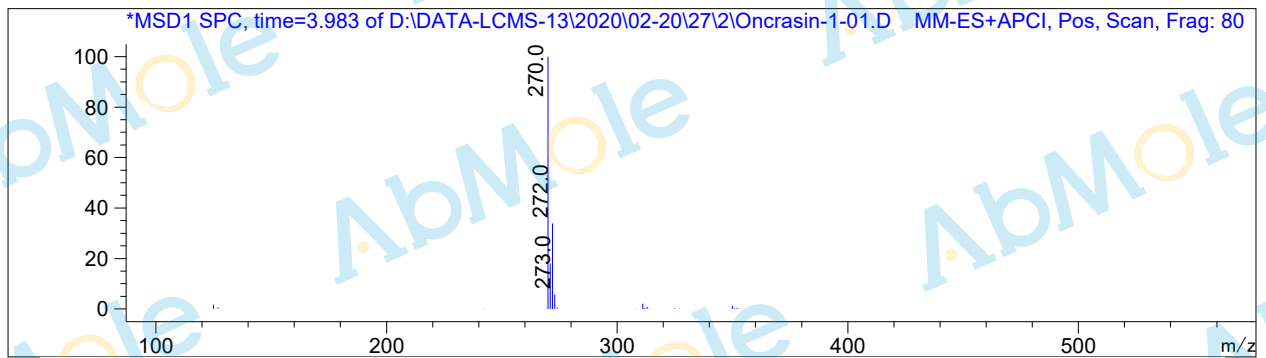
#	R.T.	Type	Height	Height%	Width	Area	Area %
1	2.742	MF	7.726	0.277	0.053	24.583	0.266
2	2.944	MF	7.739	0.278	0.046	21.541	0.233
3	3.953	BB	2749.475	98.750	0.053	9119.632	98.759
4	5.294	BB	19.339	0.695	0.057	68.511	0.742

Signal 2: DAD1 B, Sig=254,8 Ref=off

#	R.T.	Type	Height	Height%	Width	Area	Area %
1	2.945	MF	11.089	0.599	0.046	30.341	0.551
2	3.952	BB	1841.093	99.401	0.047	5476.346	99.449

Signal 3: MSD1 TIC, MS File

#	R.T.	Type	Height	Height%	Width	Area	Area %
1	3.977	MM	1.087e+006	100.000	0.102	6.663e+006	100.000



*** End of Report ***