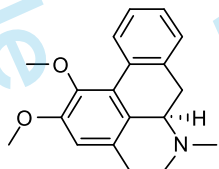


8.373
8.354
7.328
7.325
7.310
7.307
7.291
7.287
7.259
7.246
7.243
7.228
7.216
7.210
6.634

3.158
3.132
3.114
3.104
3.886
3.654
3.080
3.071
3.058
3.040
3.030
3.014
3.012
3.004
2.709
2.702
2.669
2.661
2.643
2.610
2.576
2.545
2.530
2.510
2.501
2.480
2.471
1.638
-0.001

Sample Name: Nuciferin-02
Chemical Formula: C₁₉H₂₁NO₂
Molecular Weight: 295.38



CAS: 475-83-2

CDCl₃, 400 MHz

1.00

2.06

1.02

1.01

3.07

3.07

4.23

3.03

1.05

1.03

1.09

8

6

4

2

0

PPM