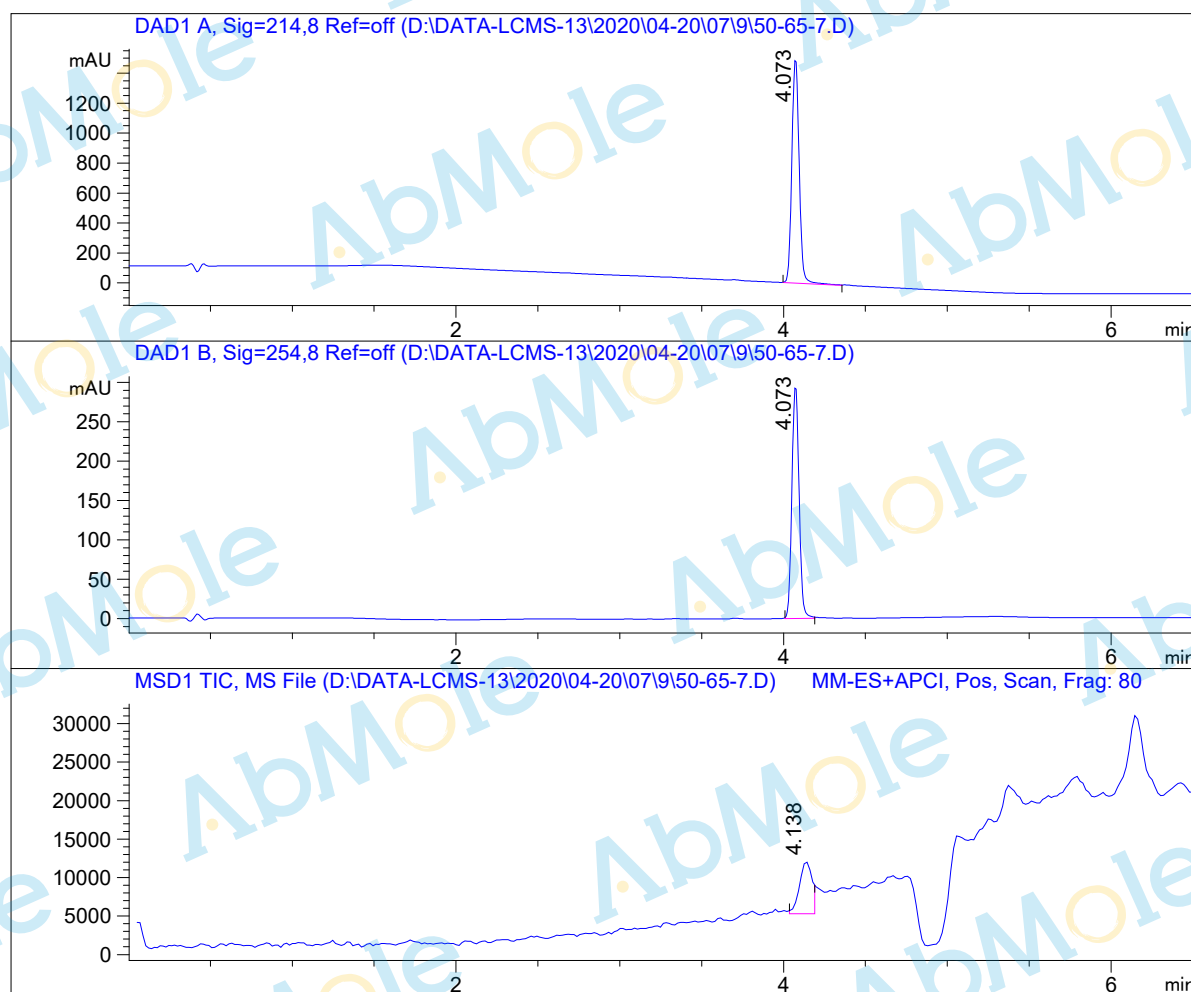


LCMS Report

Sample Name : Niclosamide-01
Data File : D:\DATA-LCMS-13\2020\04-20\07\9\50-65-7.D
Injection Date : Tue, 7. Apr. 2020 Inj. Vol. : 1ul
Acq Operator : LCMS-13 Location : Vial 82
Acq. Method : D:\data-lcms-13\2020\04-20\07\9\P-10-95-TFA.M
Method Info. : column:Xbridge C18 5um 4.6*50mm ;mobile phase:B (ACN)
A(0.05%TFA) ; gradient (B%)!as Acq.Method above



Integration Results

Signal 1: DAD1 A, Sig=214,8 Ref=off

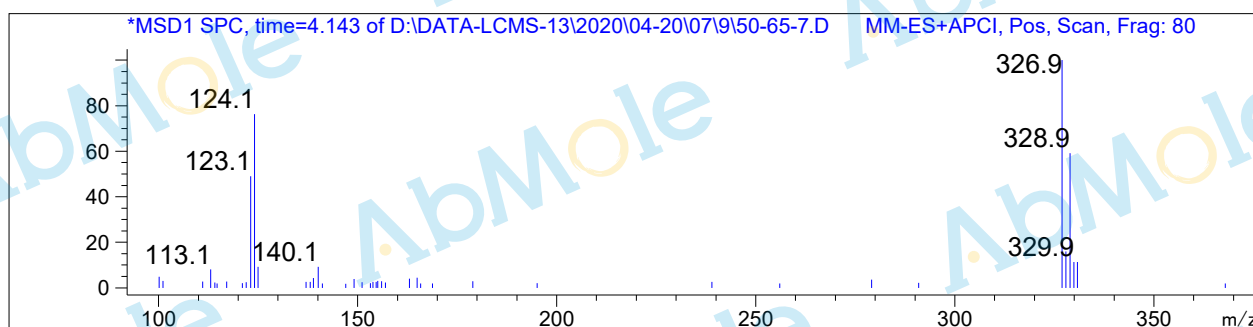
#	R.T.	Type	Height	Height%	Width	Area	Area %
1	4.073	BB	1499.973	100.000	0.048	4667.214	100.000

Signal 2: DAD1 B, Sig=254,8 Ref=off

#	R.T.	Type	Height	Height%	Width	Area	Area %
1	4.073	BB	295.451	100.000	0.048	903.592	100.000

Signal 3: MSD1 TIC, MS File

#	R.T.	Type	Height	Height%	Width	Area	Area %
1	4.138	MM	6820.075	100.000	0.091	37296.941	100.000



*** End of Report ***