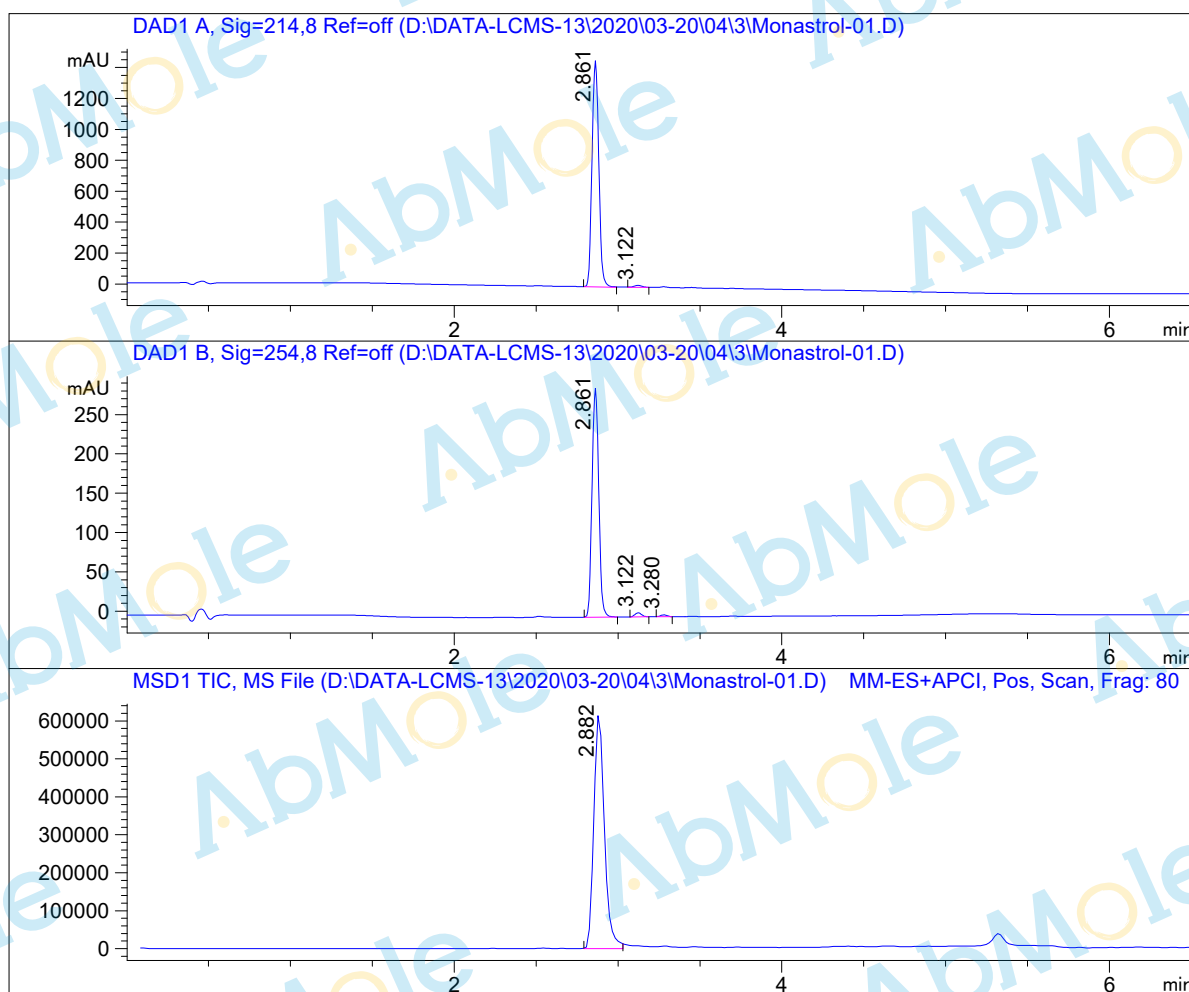


LCMS Report

Sample Name : Monastrol-01
 Data File : D:\DATA-LCMS-13\2020\03-20\04\3\Monastrol-01.D
 Injection Date : Wed, 4. Mar. 2020 Inj. Vol. : 3ul
 Acq Operator : LCMS-13 Location : Vial 66
 Acq. Method : D:\data-lcms-13\2020\03-20\04\3\P-05-95.M
 Method Info. : column:Xbridge C18 5um 4.6*30mm ;mobile phase:B (ACN)
 A(0.02%NH4Ac); gradient (B%)!as Acq.Method above



Integration Results

Signal 1: DAD1 A, Sig=214,8 Ref=off

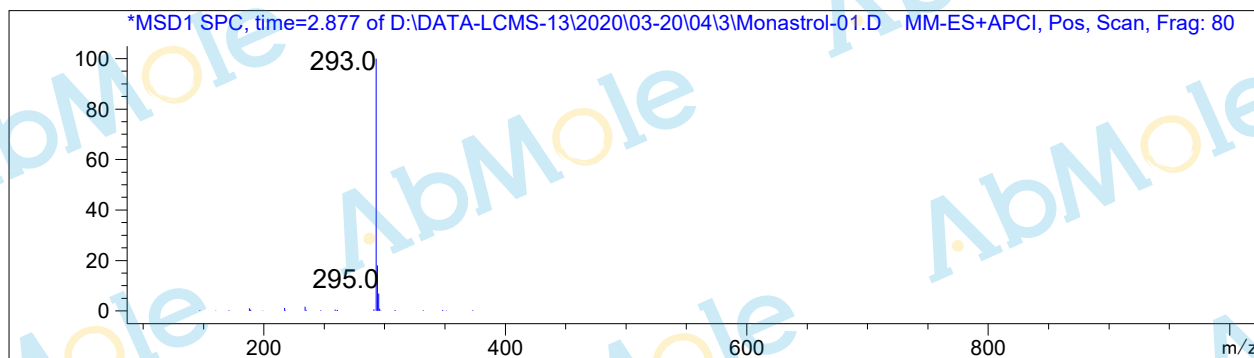
#	R.T.	Type	Height	Height%	Width	Area	Area %
1	2.861	MM	1470.201	99.110	0.048	4230.138	99.024
2	3.122	MF	13.208	0.890	0.053	41.697	0.976

Signal 2: DAD1 B, Sig=254,8 Ref=off

#	R.T.	Type	Height	Height%	Width	Area	Area %
1	2.861	MM	292.539	97.468	0.048	834.067	97.450
2	3.122	FM	5.246	1.748	0.048	14.978	1.750
3	3.280	MM	2.354	0.784	0.048	6.849	0.800

Signal 3: MSD1 TIC, MS File

#	R.T.	Type	Height	Height%	Width	Area	Area %
1	2.882	MM	630039.188	100.000	0.073	2.774e+006	100.000



*** End of Report ***