

# LC-MS Report

Sample Name : Mevastatin-01\  
Data File : D:\DATA-LCMS-13\2019\11-19\05\3\Mevastatin-01.D  
Injection Date : Tue, 5. Nov. 2019 Inj. Vol. : 5ul  
Acq Operator : LCMS-13 Location : Vial 77  
Acq. Method : D:\data-lcms-13\2019\11-19\05\3\P-05-95.M  
Method Info. : column:C18;column size:4.6\*50mm ;mobile phase:B (ACN)  
A(0.02%NH4Ac); gradient(B%)!as Acq.Method above



## Integration Results

Signal 1: DAD1 A, Sig=214,8 Ref=off

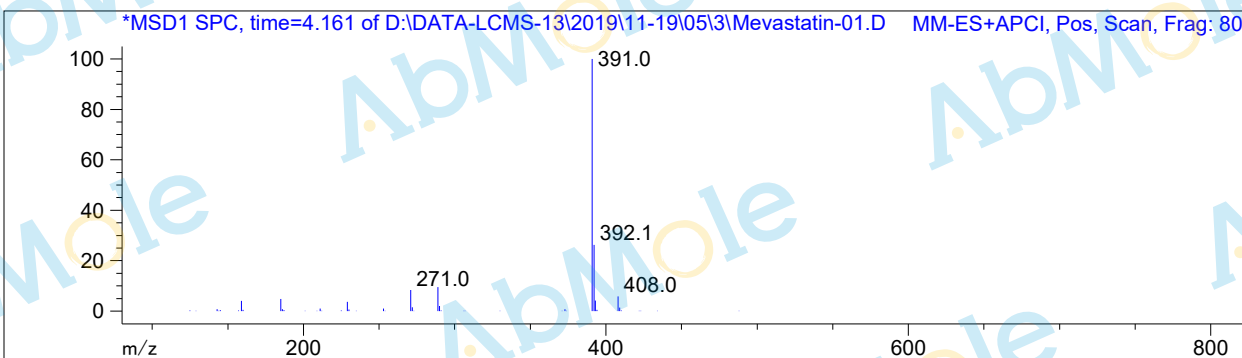
#	R.T.	Type	Height	Height%	Width	Area	Area %
1	4.146	FM	1277.013	98.995	0.105	8011.051	99.687
2	4.356	FM	12.968	1.005	0.032	25.120	0.313

Signal 2: DAD1 B, Sig=254,8 Ref=off

#	R.T.	Type	Height	Height%	Width	Area	Area %
1	4.146	FM	224.497	100.000	0.109	1465.360	100.000

Signal 3: MSD1 TIC, MS File

#	R.T.	Type	Height	Height%	Width	Area	Area %
1	4.164	MF	3.797e+006	100.000	0.166	3.777e+007	100.000



\*\*\* End of Report \*\*\*