

7.337  
7.311

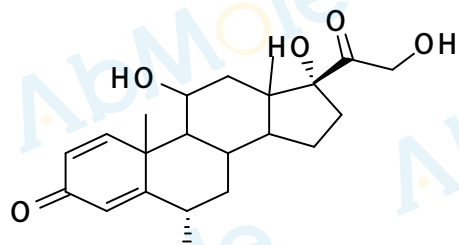
6.190  
6.185  
6.164  
6.160  
5.817

5.176  
4.668  
4.653  
4.646  
4.468  
4.454  
4.269  
4.095  
4.081

3.334

2.511  
2.506  
2.502  
2.498  
2.493  
2.048  
1.827  
1.597  
1.554  
1.549  
1.520  
1.514  
1.383  
1.054  
1.038  
0.860  
0.853  
0.833  
0.768  
0.719  
0.689  
-0.000

Chemical Formula: C<sub>22</sub>H<sub>30</sub>O<sub>5</sub>  
Molecular Weight: 374.48



CAS: 83-43-2

DMSO-d<sub>6</sub>, 400 MHz

Sample name: Methylprednisolone-02

