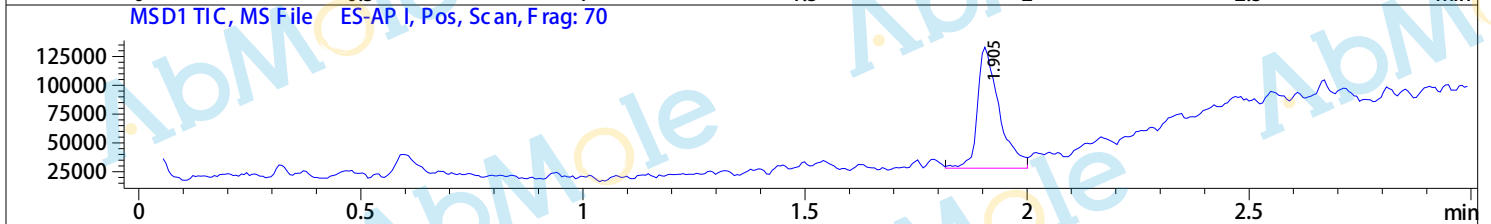
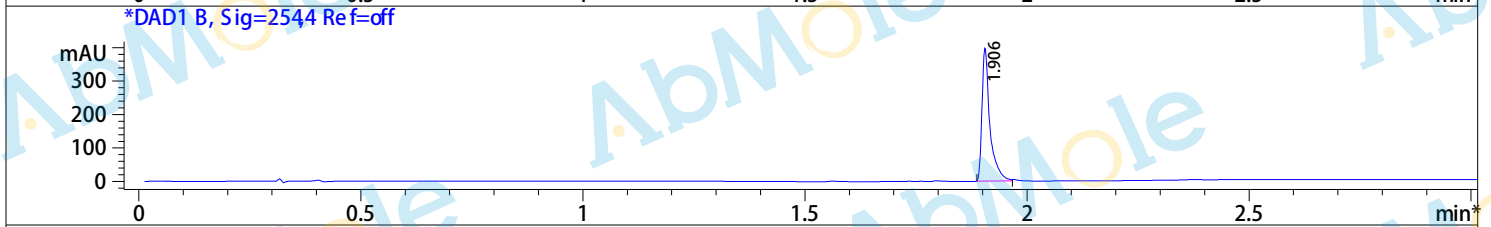
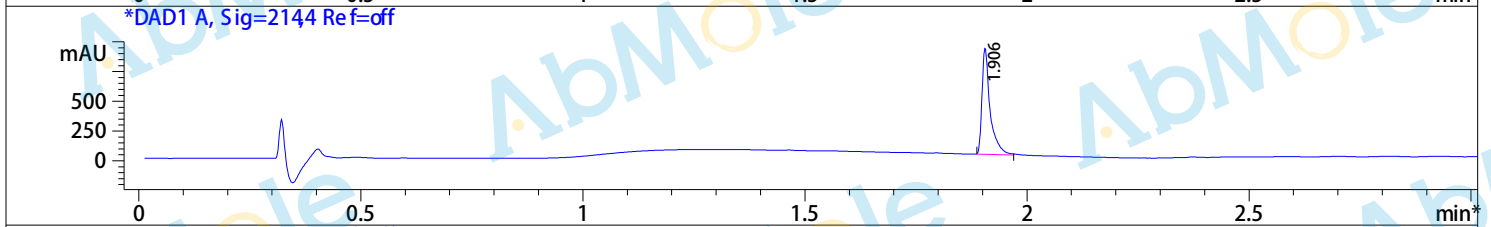
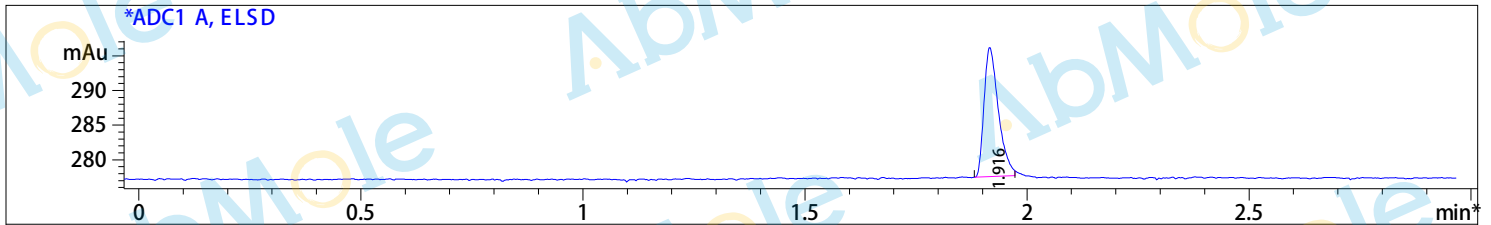


Injection Date : 10 Sep 20
 Sample Name : MSDC-0602-01
 Method Info : Mobile Phase : A: water (0.1%FA) B: Acetonitrile(0.1%FA)
 Gradient : 10%B for 0.2min, increase to 90%B within 1.3min, 90%B for 1.5min
 Flow Rate : 2mL/min
 Column : Sunfire C18 , 4.6*50mm, 3.5um
 Oven Temperature : 50 C
 Detection: UV(214, 4nm) and MS(ESI, Pos mode, 110 to 1000 amu)



IntegrationResults forADC1 A,ELSD

RetTim	Width	Area	Height	Area%
1.92	0.03	41.79	18.64	100.00

IntegrationResults forDAD1 A, Sig=2144 Ref=off

RetTim	Width	Area	Height	Area%
1.91	0.02	1136.87	896.42	100.00

IntegrationResults forDAD1 B, Sig=2544 Ref=off

RetTim	Width	Area	Height	Area%
1.91	0.02	493.44	399.21	100.00

Ret. Time: 1.91 <<<< POSITIVE SPECTRA >>>>

