

LCMS Report

Sample Name : MK-571 sodium salt-01
 Data File : D:\DATA-LCMS-13\2020\04-20\21\3\115103-85-0.D
 Injection Date : Tue, 21. Apr. 2020 Inj. Vol. : 2ul
 Acq Operator : LCMS-13 Location : Vial 44
 Acq. Method : D:\data-lcms-13\2020\04-20\21\3\P-05-95.M
 Method Info. : column:Xbridge C18 5um 4.6*30mm ;mobile phase:B (ACN)
 A(0.02%NH4Ac); gradient(B%)!as Acq.Method above



Integration Results

Signal 1: DAD1 A, Sig=214,8 Ref=off

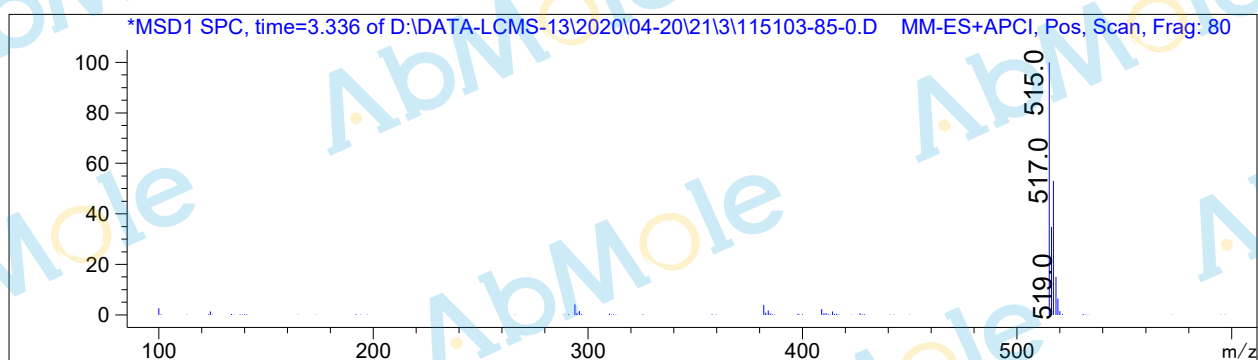
#	R.T.	Type	Height	Height%	Width	Area	Area %
1	3.007	MF	2.897	0.319	0.056	9.765	0.277
2	3.100	FM	1.684	0.185	0.048	4.895	0.139
3	3.187	FM	2.710	0.298	0.061	9.942	0.282
4	3.303	FM	887.702	97.696	0.064	3432.997	97.443
5	3.513	FM	4.666	0.513	0.101	28.406	0.806
6	4.774	BB	8.981	0.988	0.064	37.091	1.053

Signal 2: DAD1 B, Sig=254,8 Ref=off

#	R.T.	Type	Height	Height%	Width	Area	Area %
1	3.303	BB	485.636	99.287	0.057	1884.098	98.994
2	4.385	BB	3.487	0.713	0.086	19.143	1.006

Signal 3: MSD1 TIC, MS File

#	R.T.	Type	Height	Height%	Width	Area	Area %
1	3.334	MM	145244.813	100.000	0.111	966519.938	100.000



*** End of Report ***