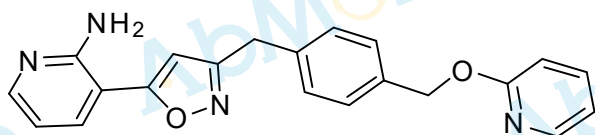


8.174
8.170
8.162
8.161
8.158
8.094
8.089
8.081
8.077
7.879
7.875
7.860
7.856
7.716
7.713
7.712
7.708
7.695
7.690
7.419
7.399
7.343
7.323
6.998
6.996
6.985
6.983
6.980
6.978
6.967
6.966
6.862
6.841
6.807
6.707
6.695
6.688
6.676
6.250
5.321
4.036
3.318
2.511
2.507
2.502
2.497
2.493
-0.001

M9503-E1210-01

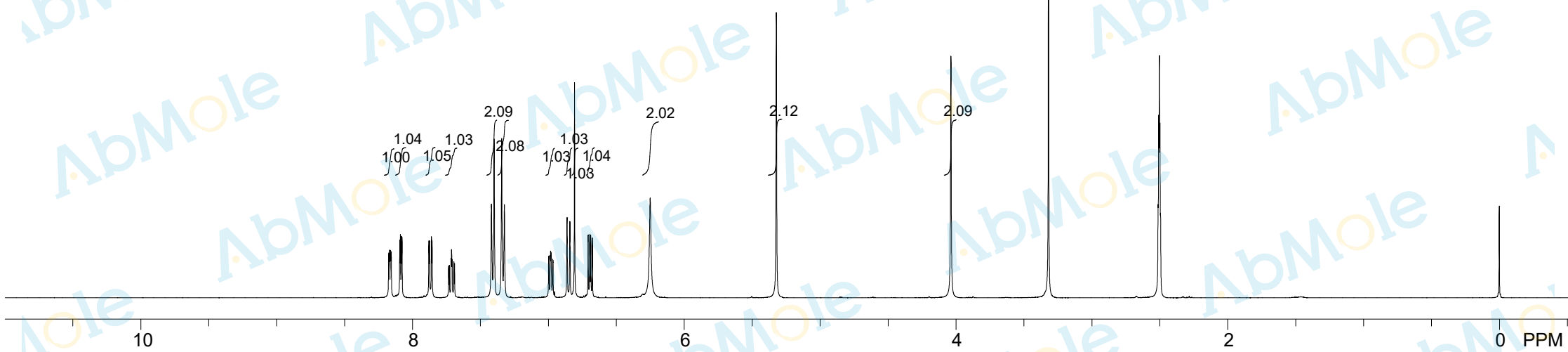
Chemical Formula: C₂₁H₁₈N₄O₂

Molecular Weight: 358.40



CAS: 936339-60-5

DMSO-d₆, 400 MHz



10

8

6

4

2

0

PPM