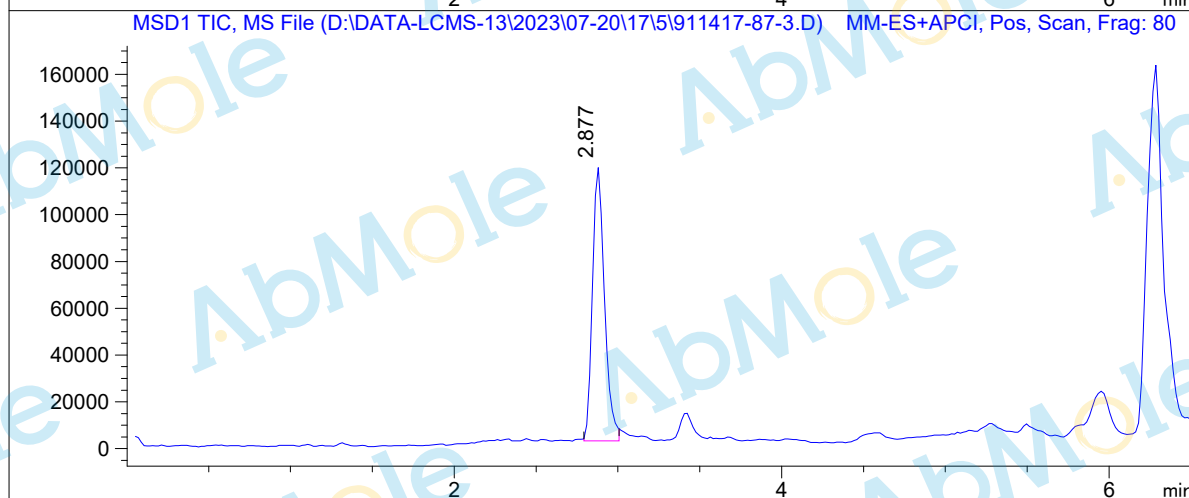
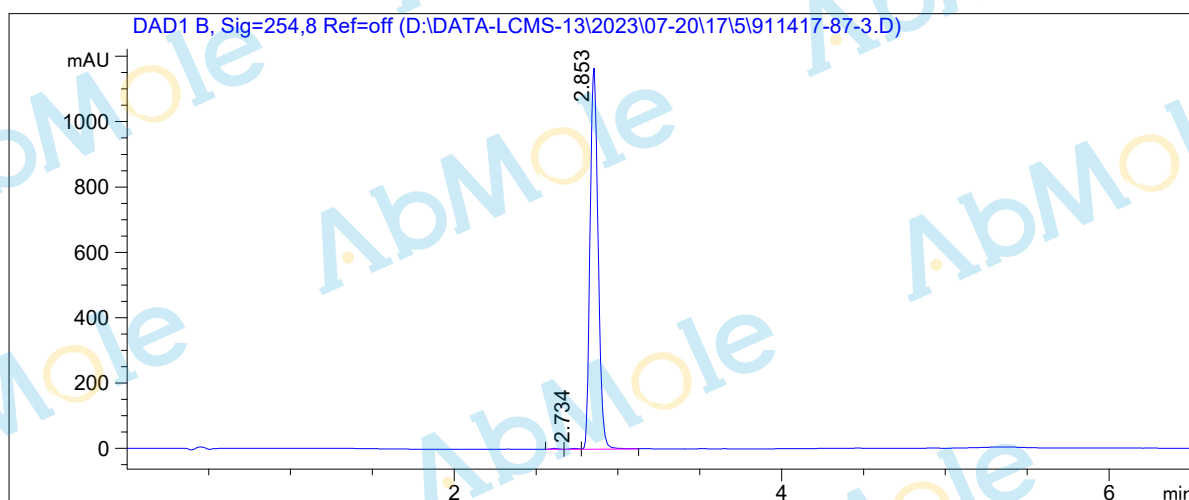


LCMS Report

Sample Name : M9209-Belumosudil-01
 Data File : D:\DATA-LCMS-13\2023\07-20\17\5\911417-87-3.D
 Injection Date : Tue, 19. Jul. 2023 Inj. Vol. : 2ul
 Acq Operator : LCMS-13 Location : Vial 74
 Acq. Method : D:\data-lcms-13\2023\07-20\17\5\P-05-95-TFA.M
 Method Info. : column:Xbridge C18 5um 4.6*50mm ;mobile phase:B (ACN)
 A(0.05%TFA) ; gradient (B%)!as Acq.Method above



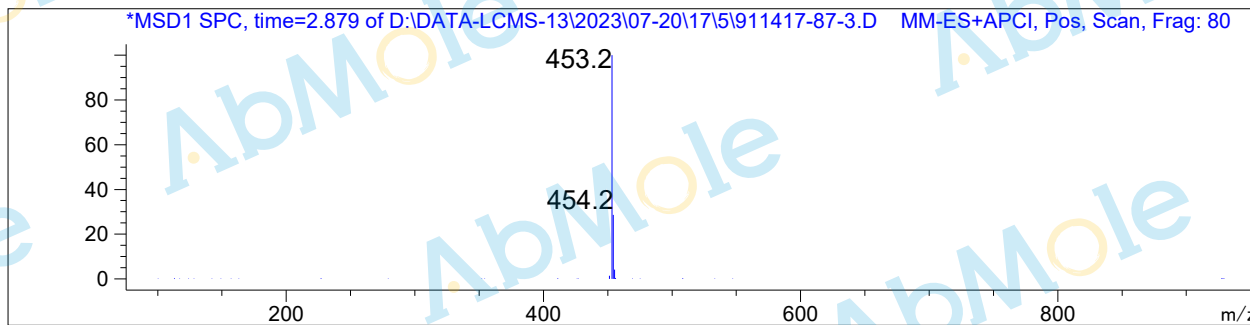
Integration Results

Signal 1: DAD1 B, Sig=254,8 Ref=off

#	R.T.	Type	Height	Height%	Width	Area	Area %
1	2.611	MF	2.765	0.235	0.053	8.792	0.219
2	2.734	MF	2.412	0.205	0.048	6.929	0.172
3	2.853	FM	1173.507	99.561	0.057	4002.140	99.609

Signal 2: MSD1 TIC, MS File

#	R.T.	Type	Height	Height%	Width	Area	Area %
1	2.877	MM	118367.148	100.000	0.085	604710.563	100.000



*** End of Report ***