

Sample Name : M9096-H2DCFDA-06-DMSO

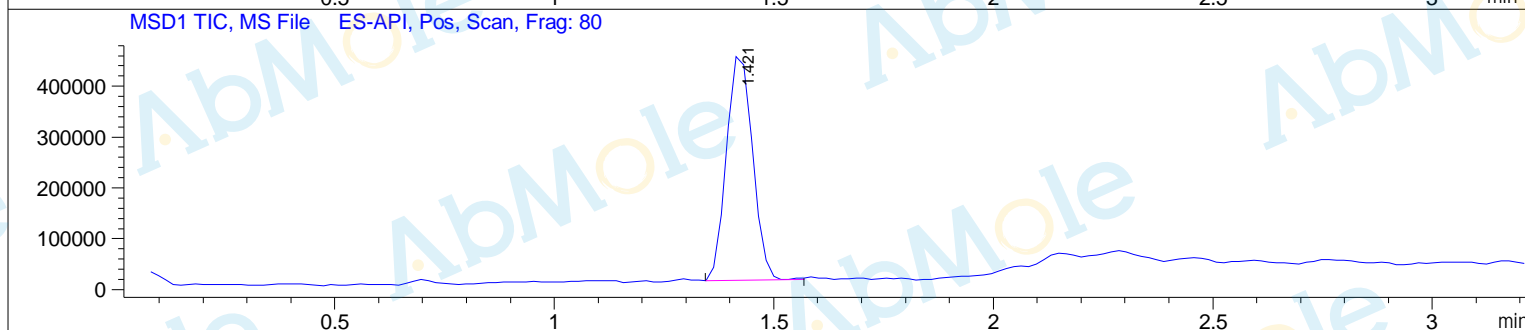
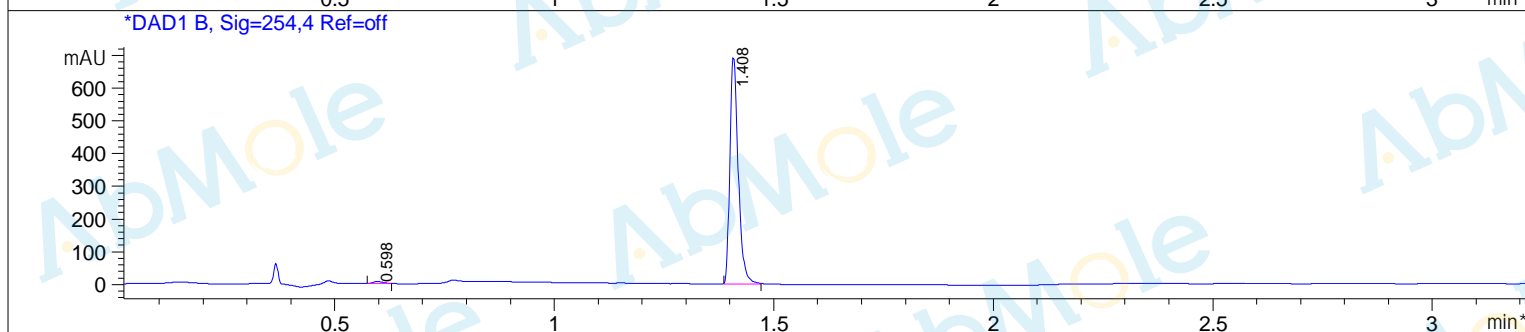
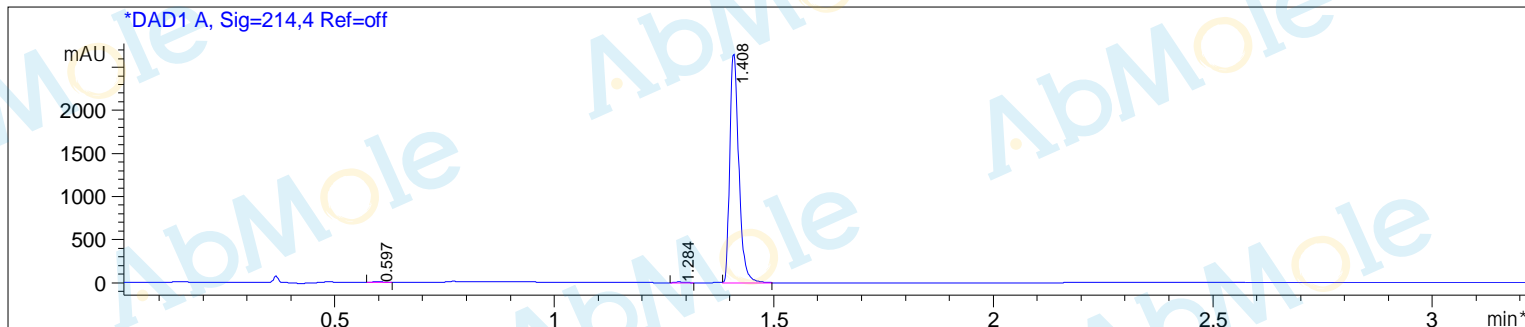
Method Info : Column:Xbridge C18(2) (4.6x 50 mm, 3.5um)

Mobile phase: H2O(10 mmol NH4HCO3) (A) / ACN(B)

Elution program: Gradient from 5 to 95% of B in1.5min at 1.8ml/min

Temperature: 50 °C

Detection: UV (214 , 4 nm) and MS (ESI, Pos mode ,103 to 800 amu)



Integration Results for DAD1 A, Sig=214,4 Ref=off

RetTim	Width	Area	Height	Area%
0.60	0.02	13.01	8.07	0.34
1.28	0.02	11.50	9.21	0.30
1.41	0.02	3808.45	2651.36	99.36

Integration Results for DAD1 B, Sig=254,4 Ref=off

RetTim	Width	Area	Height	Area%
0.60	0.02	10.64	6.86	1.14
1.41	0.02	919.61	692.29	98.86

Ret. Time: 1.42

<<<< POSITIVE SPECTRA >>>>

*ES-API Positive

