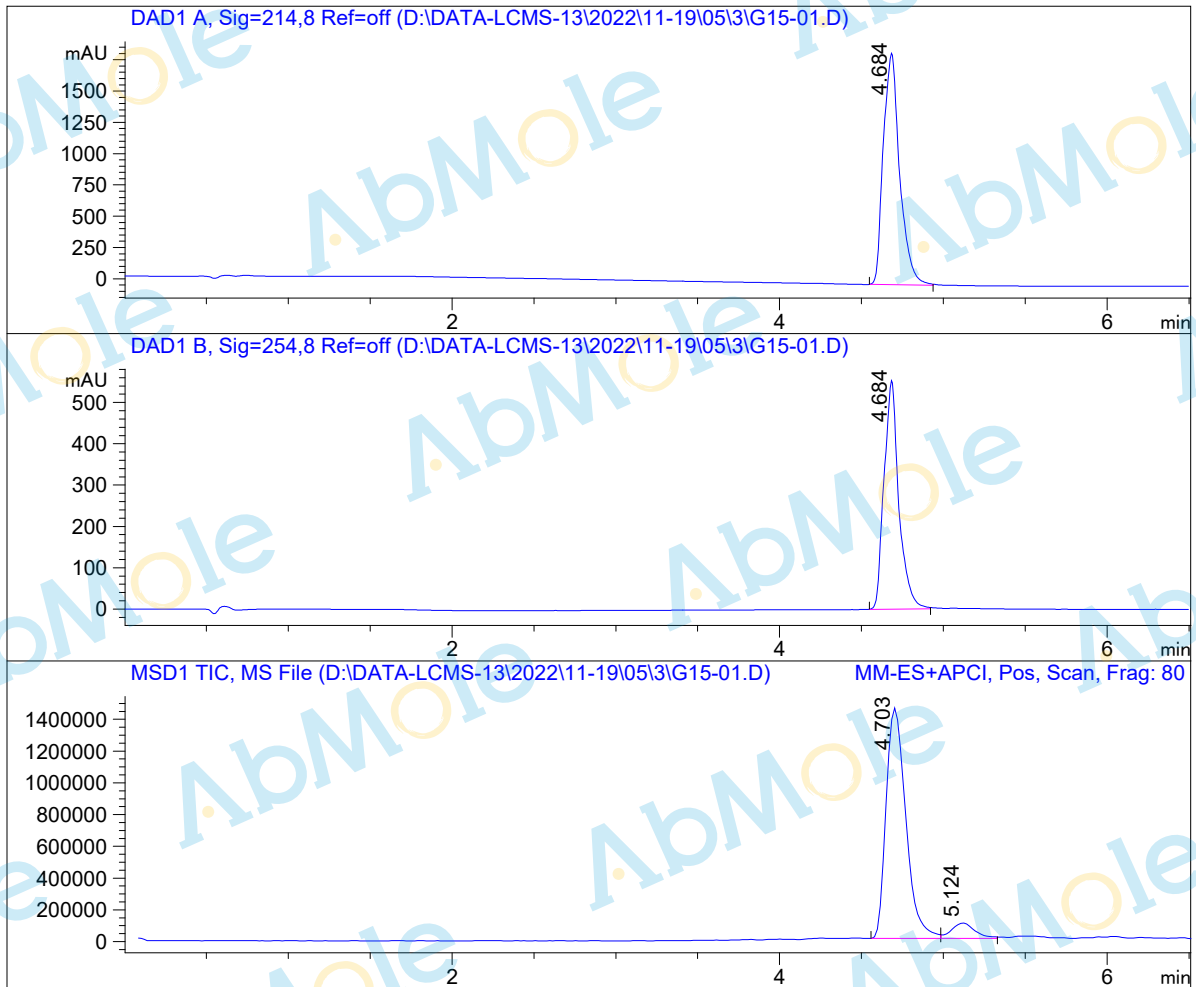


LC-MS Report

Sample Name : M7871-G15-01
Data File : D:\DATA-LCMS-13\2022\11-19\05\3\G15-01.D
Injection Date : Tue, 5. Nov. 2022 Inj. Vol. : 5ul
Acq Operator : LCMS-13 Location : Vial 65
Acq. Method : D:\data-lcms-13\2022\11-19\05\3\P-05-95.M
Method Info. : column:C18;column size:4.6*50mm ;mobile phase:B (ACN)
A(0.02%NH4Ac); gradient(B%)!as Acq.Method above



Integration Results

Signal 1: DAD1 A, Sig=214,8 Ref=off

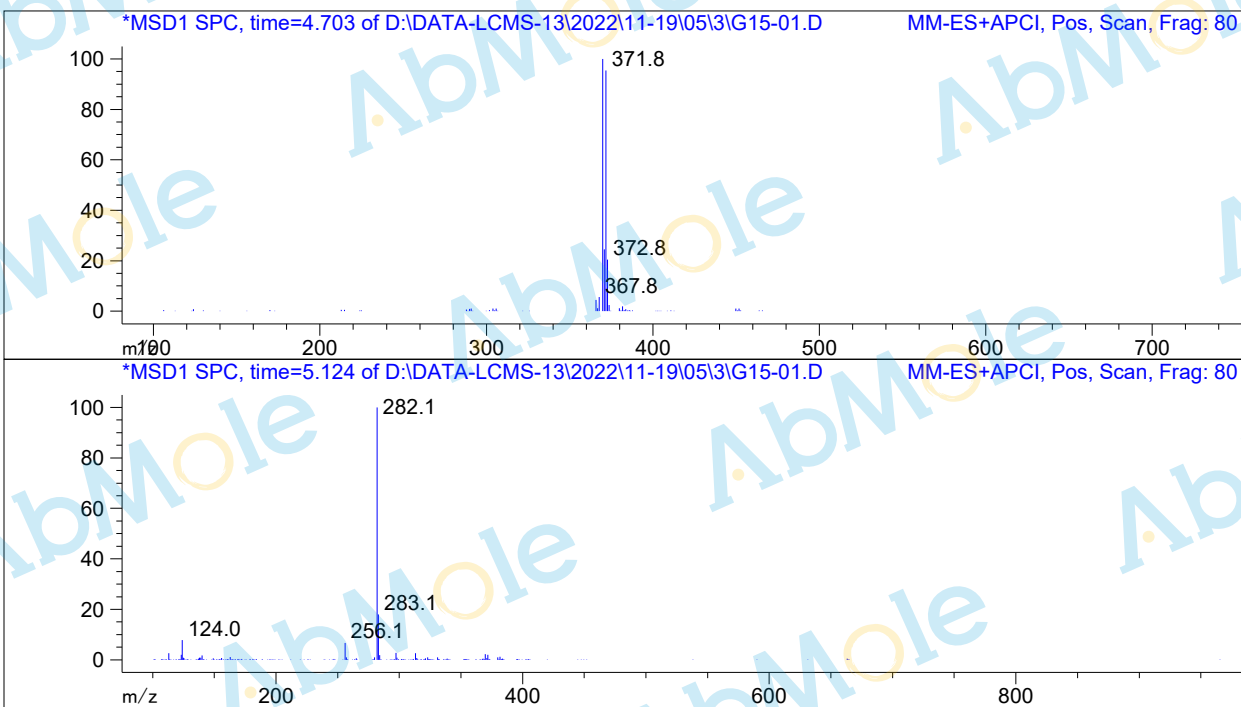
#	R.T.	Type	Height	Height%	Width	Area	Area %
1	4.684	MF	1853.140	100.000	0.115	12829.199	100.000

Signal 2: DAD1 B, Sig=254,8 Ref=off

#	R.T.	Type	Height	Height%	Width	Area	Area %
1	4.684	MF	554.937	100.000	0.104	3474.784	100.000

Signal 3: MSD1 TIC, MS File

#	R.T.	Type	Height	Height%	Width	Area	Area %
1	4.703	MF	1.458e+006	93.715	0.139	1.217e+007	92.624
2	5.124	FM	97783.883	6.285	0.165	969304.625	7.376



*** End of Report ***