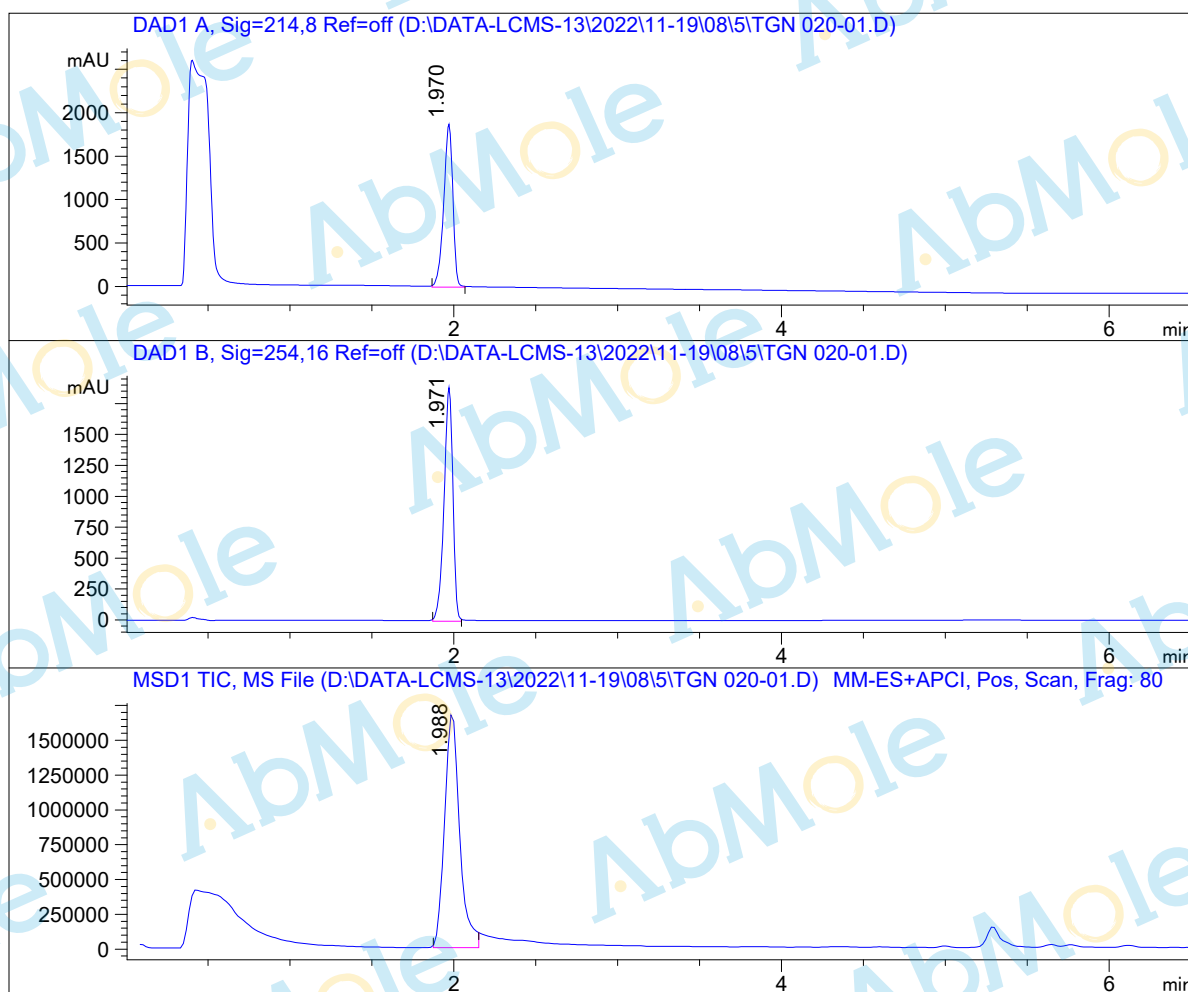


LC-MS Report

Sample Name : M7407-TGN 020-01
Data File : D:\DATA-LCMS-13\2022\11-19\08\5\TGN 020-01.D
Injection Date : Thu, 8. Nov. 2022 Inj. Vol. : 5ul
Acq Operator : LCMS-13 Location : Vial 18
Acq. Method : D:\data-lcms-13\2022\11-19\08\5\P-05-95-C2.M
Method Info. : column:C18;column size:4.6*50mm ;mobile phase:B (ACN)
A(0.02%NH4Ac); gradient(B%)!as Acq.Method above



Integration Results

Signal 1: DAD1 A, Sig=214,8 Ref=off

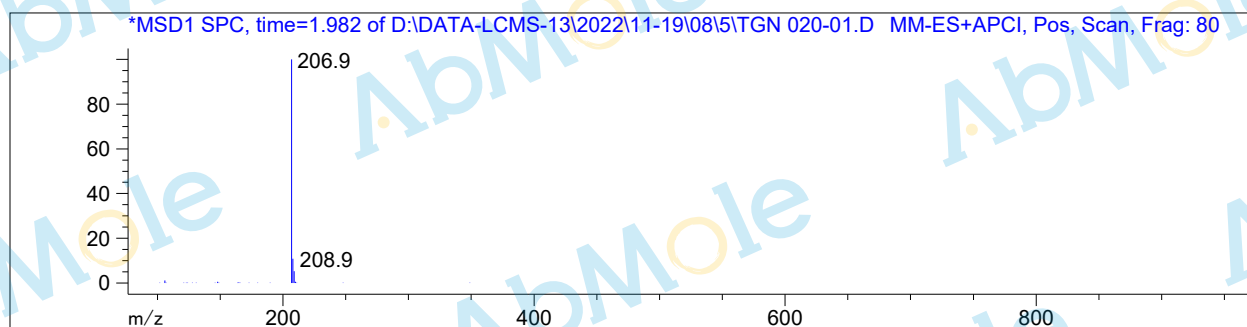
#	R.T.	Type	Height	Height%	Width	Area	Area %
1	1.970	MM	1884.818	100.000	0.064	7264.354	100.000

Signal 2: DAD1 B, Sig=254,16 Ref=off

#	R.T.	Type	Height	Height%	Width	Area	Area %
1	1.971	MM	1899.255	100.000	0.062	7115.576	100.000

Signal 3: MSD1 TIC, MS File

#	R.T.	Type	Height	Height%	Width	Area	Area %
1	1.988	MM	1.701e+006	100.000	0.107	1.094e+007	100.000



*** End of Report ***