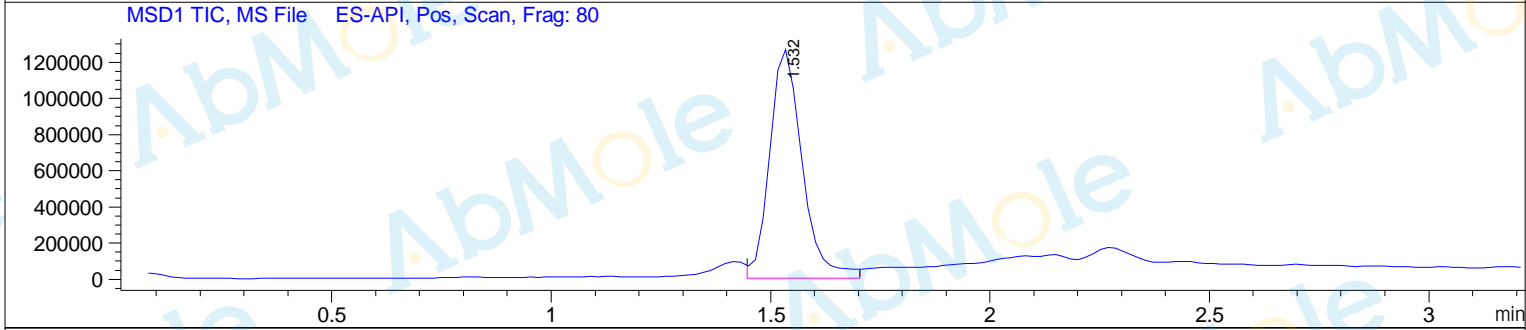
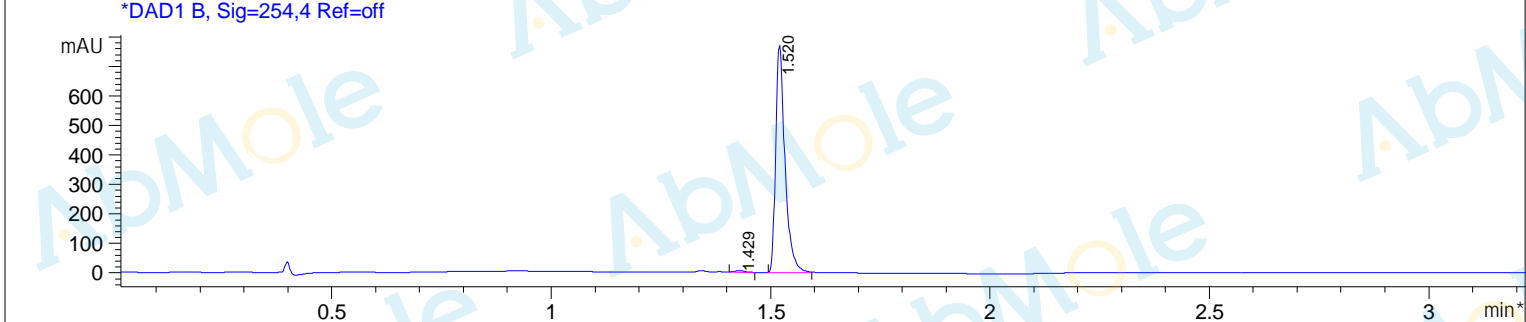
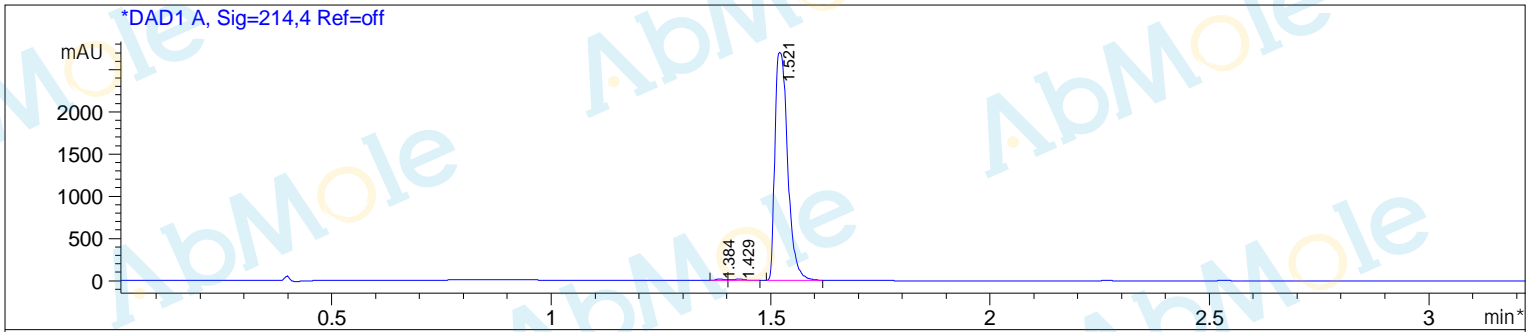


Sample Name : M6922-Luzindole-02
Acq. Operator : C22
Spec. Reported : MS Integration
Acq. Method : D:\METHODS\1-POS-MON-1.M
Analysis Method : D:\METHODS\1-POS-MON-1.M
Sample Info : Easy-Access Method: '1-POS-MON-1'
Method Info : Column:Xbridge C18(2) (4.6x 50 mm, 3.5um)
 Mobile phase: H2O(10 mmol NH4HCO3) (A) / ACN(B)
 Elution program: Gradient from 10 to 95% of B in1.5min at 1.8ml/min
 Temperature: 50 °C
 Detection: UV (214 , 4 nm) and MS (ESI, Pos mode ,103 to 800 amu)



Integration Results for DAD1 A, Sig=214,4 Ref=off

RetTim	Width	Area	Height	Area%
1.38	0.02	23.62	17.99	0.43
1.43	0.03	31.94	17.68	0.58
1.52	0.03	5464.78	2700.56	98.99

Integration Results for DAD1 B, Sig=254,4 Ref=off

RetTim	Width	Area	Height	Area%
1.43	0.02	7.84	5.38	0.68
1.52	0.02	1136.54	767.46	99.32

Ret. Time: 1.53

<<<< POSITIVE SPECTRA >>>>

