

# LC/MS Report

Sample Name : M5961-Silibinin-03

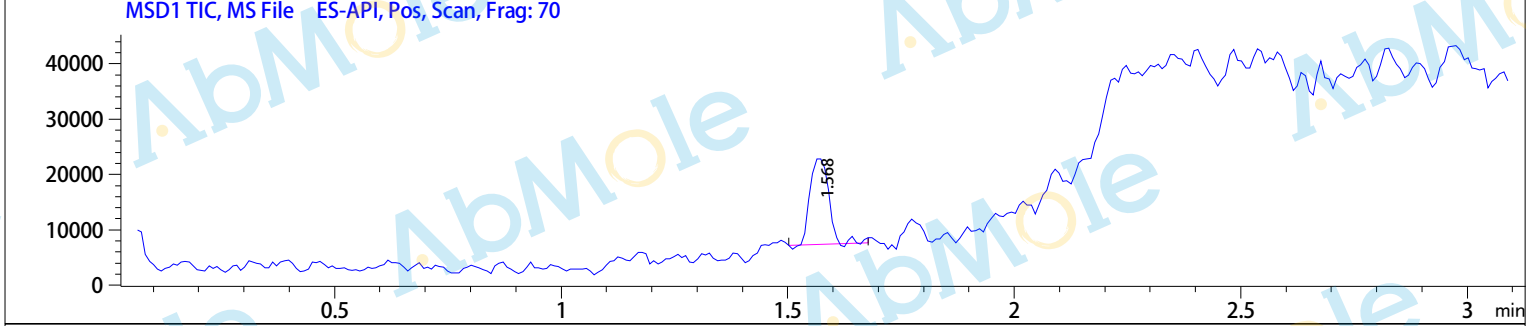
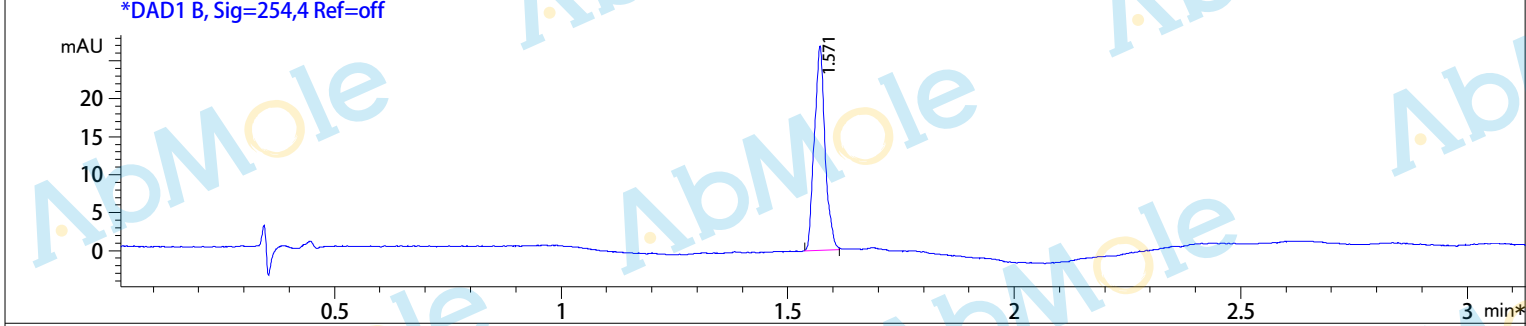
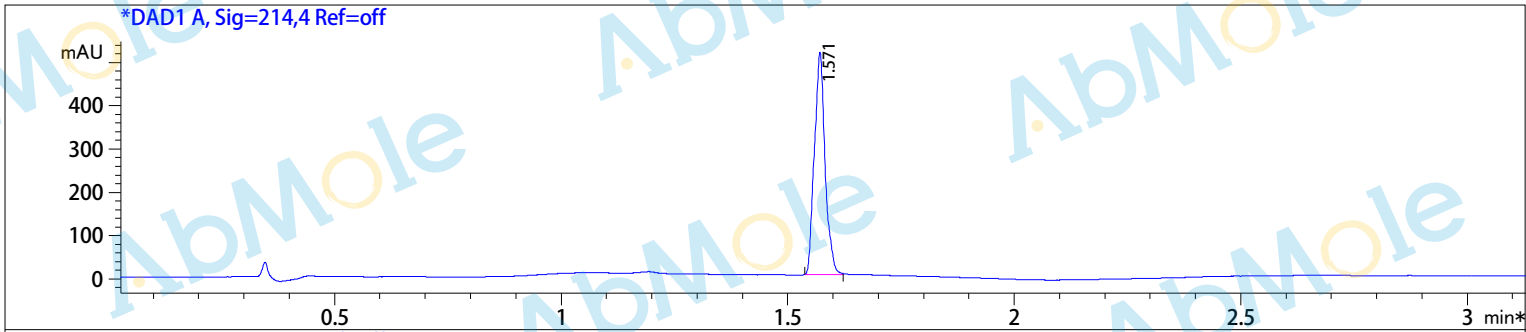
Method Info : Column:SunFire C18 (4.6x 50 mm,3.5 um)

Mobile phase: H2O(0.01%TFA ) (A) / ACN(0.01%TFA) (B)

Elution program: Gradient from 10 to95% of B in 1.4 min at 2ml/min

Temperature: 50 °C

Detection: UV (214 , 4 nm) and MS (ESI, Pos mode ,110 to 1000 amu)



## Integration Results for DAD1 A, Sig=214,4 Ref=off

RetTim	Width	Area	Height	Area%
1.57	0.02	847.00	512.62	100.00

## Integration Results for DAD1 B, Sig=254,4 Ref=off

RetTim	Width	Area	Height	Area%
1.57	0.02	44.21	26.86	100.00

Ret. Time: 1.57

&lt;&lt;&lt;&lt; POSITIVE SPECTRA &gt;&gt;&gt;&gt;

\*ES-API Positive

