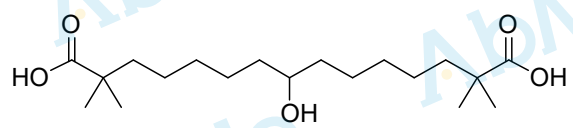


7.262

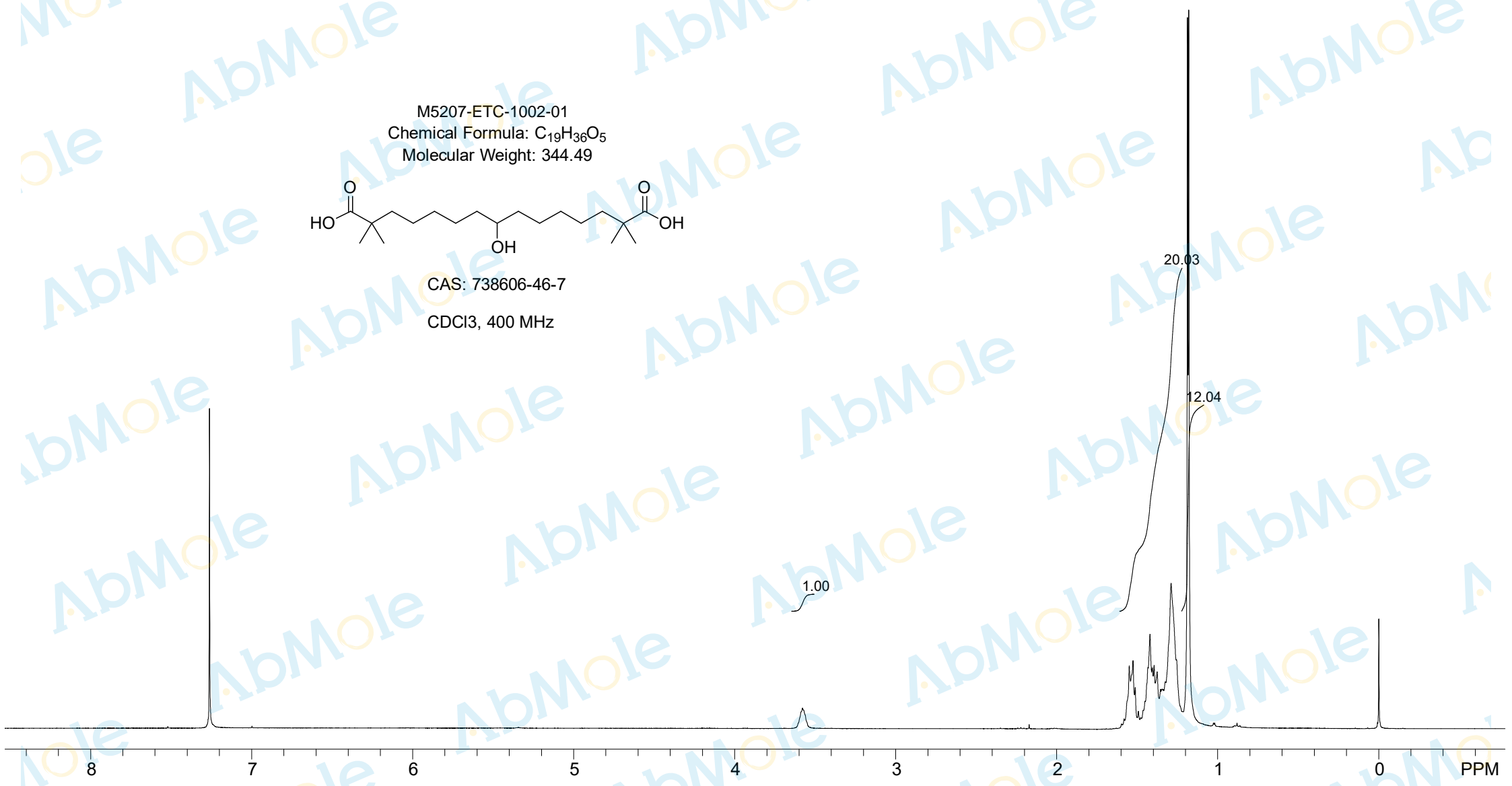
3.579
3.572

1.582
1.550
1.527
1.512
1.493
1.479
1.463
1.452
1.434
1.421
1.407
1.396
1.377
1.355
1.346
1.338
1.325
1.290
1.256
1.188
1.180
-0.000

M5207-ETC-1002-01
Chemical Formula: C₁₉H₃₆O₅
Molecular Weight: 344.49



CAS: 738606-46-7
CDCl₃, 400 MHz



8

7

6

5

4

3

2

1

0

PPM