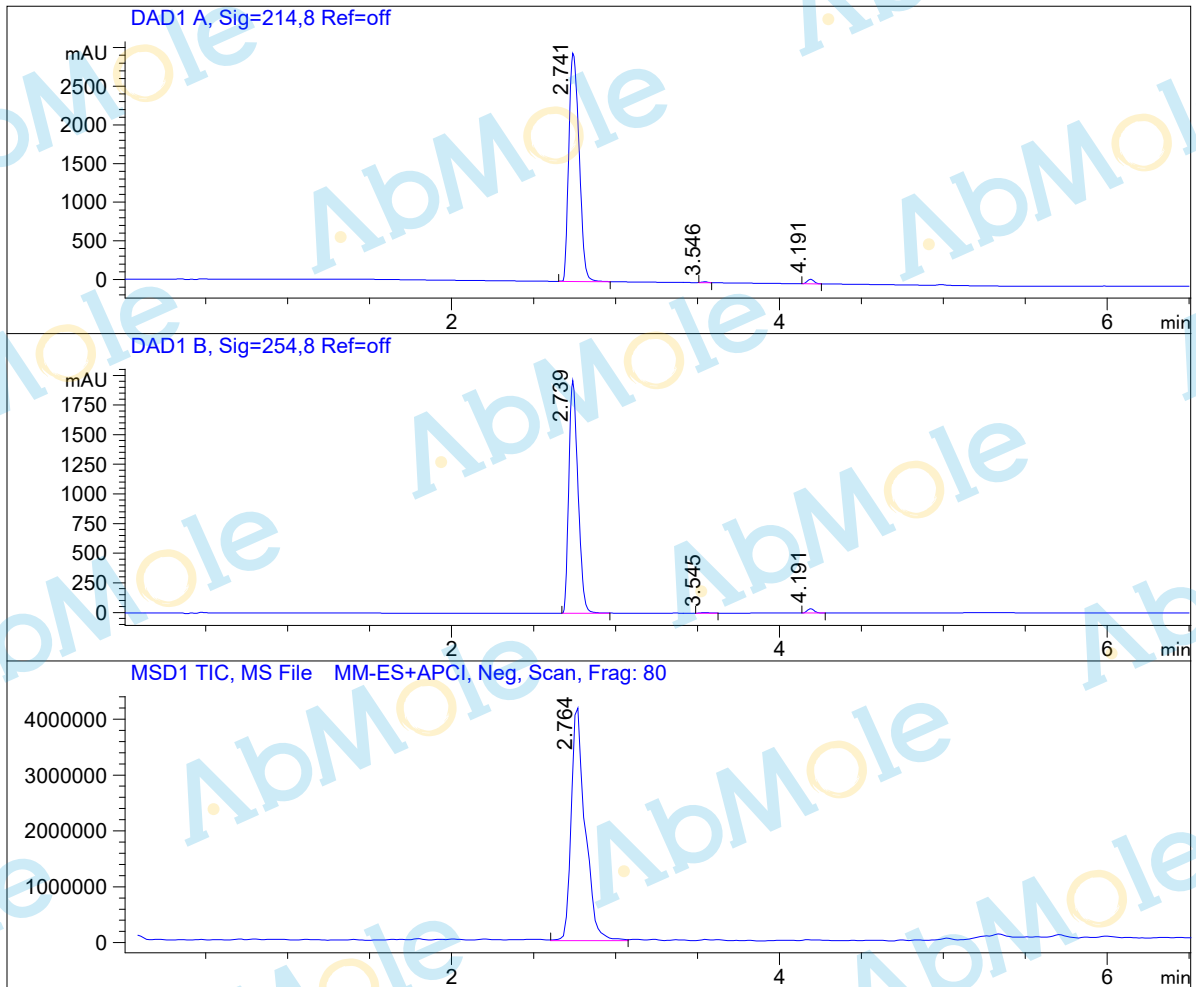


LC-MS Report

Sample Name : Kartogenin-02
Data File : D:\DATA-LCMS-13\2024\01-20\14\4\Kartogenin-02.D
Injection Date : Sun, 14. Jan. 2024 Inj. Vol. : 5ul
Acq Operator : LCMS-13 Location : Vial 57
Acq. Method : D:\data-lcms-13\2024\01-20\14\4\N-05-95.M
Method Info. : column:Xbridge C18 5um 4.6*30mm ;mobile phase:B (ACN)
A(0.02%NH4Ac); gradient(B%)!as Acq.Method above



Integration Results

Signal 1: DAD1 A, Sig=214,8 Ref=off

#	R.T.	Type	Height	Height%	Width	Area	Area %
1	2.741	MF	2963.320	97.703	0.073	12930.033	98.441
2	3.546	FM	11.257	0.371	0.047	31.646	0.241
3	4.191	MF	58.421	1.926	0.049	173.125	1.318

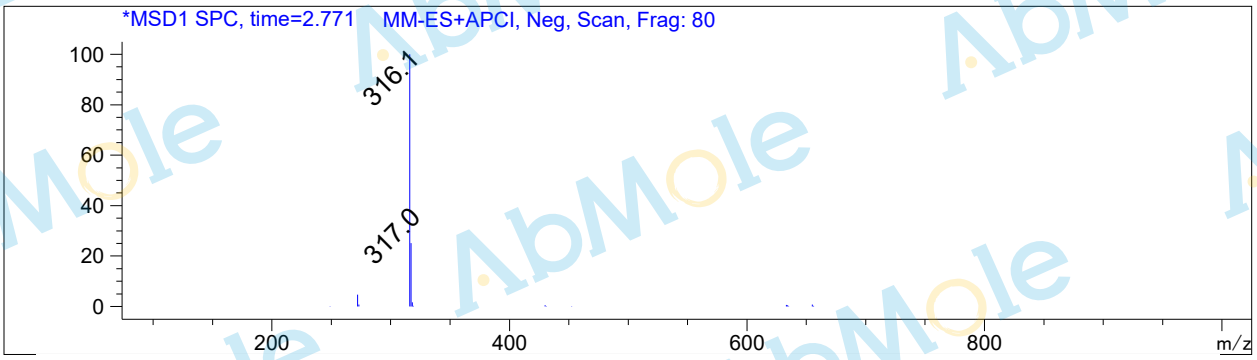
#	R.T.	Type	Height	Height%	Width	Area	Area %
---	------	------	--------	---------	-------	------	--------

Signal 2: DAD1 B, Sig=254,8 Ref=off

#	R.T.	Type	Height	Height%	Width	Area	Area %
1	2.739	BB	1962.641	97.934	0.061	7633.031	98.414
2	3.545	BB	5.112	0.255	0.047	15.184	0.196
3	4.191	BB	36.299	1.811	0.047	107.793	1.390

Signal 3: MSD1 TIC, MS File

#	R.T.	Type	Height	Height%	Width	Area	Area %
1	2.764	VV	4.254e+006	100.000	0.083	2.460e+007	100.000



*** End of Report ***