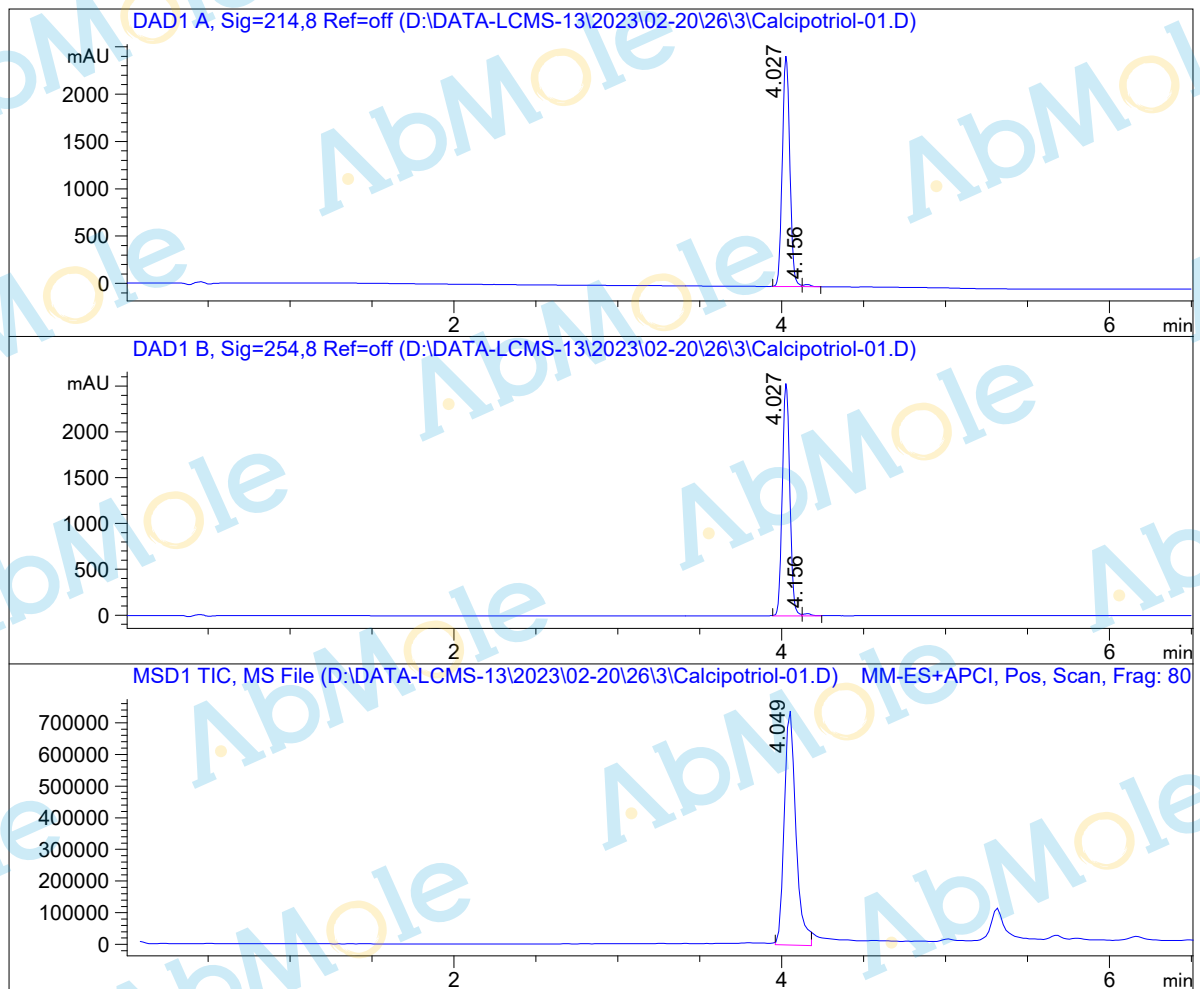


LCMS Report

Sample Name : M3891-Calcipotriol-01
Data File : D:\DATA-LCMS-13\2023\02-20\26\3\Calcipotriol-01.D
Injection Date : Sun, 26. Feb. 2023 Inj. Vol. : 5ul
Acq Operator : LCMS-13 Location : Vial 2
Acq. Method : D:\data-lcms-13\2023\02-20\26\3\P-05-95.M
Method Info. : column:Eclipse XDB-C18 5um 4.6*150mm ;mobile phase:B(ACN) A(0.02%NH4AC); gradient(B%)!as Acq.Method above



Integration Results

Signal 1: DAD1 A, Sig=214,8 Ref=off

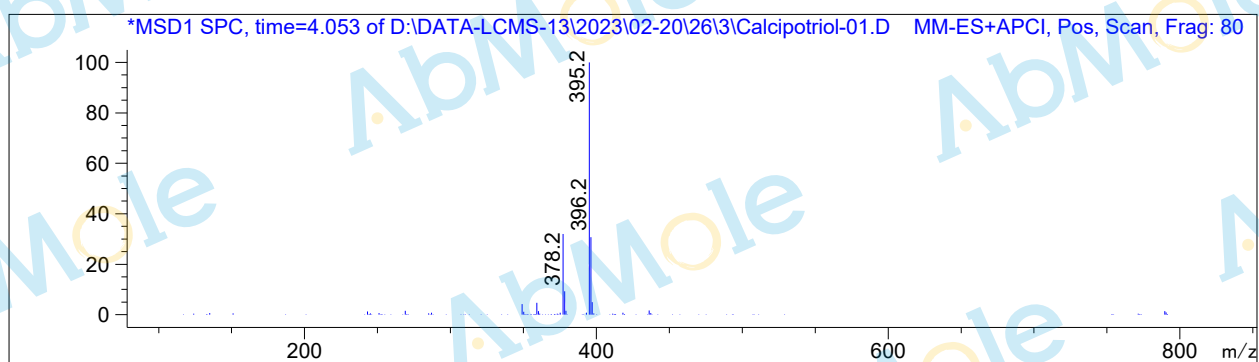
#	R.T.	Type	Height	Height%	Width	Area	Area %
1	4.027	BV	2440.757	99.085	0.051	7786.660	99.090
2	4.156	VB	22.527	0.915	0.047	71.546	0.910

Signal 2: DAD1 B, Sig=254,8 Ref=off

#	R.T.	Type	Height	Height%	Width	Area	Area %
1	4.027	BV	2541.541	99.082	0.051	8103.099	99.057
2	4.156	VB	23.558	0.918	0.048	77.165	0.943

Signal 3: MSD1 TIC, MS File

#	R.T.	Type	Height	Height%	Width	Area	Area %
1	4.049	MM	754914.063	100.000	0.081	3.650e+006	100.000



*** End of Report ***