

6.205
6.177
5.992
5.965

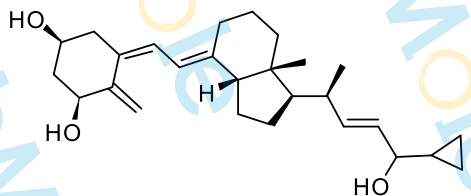
5.373
5.360
5.354
5.220
4.874
4.862
4.755
4.750
4.575
4.564
4.554
4.544
4.193
4.183
4.173
3.983
3.976
3.334

2.185
2.807
2.172
1.993
1.986
1.969
2.343
1.944
1.913
1.772
1.656
1.632
1.602
1.393
1.370
1.348
1.326
1.302
1.279
1.269
1.235
1.006
0.990
0.813
0.794
0.521
0.350
0.331
0.313
0.220
0.207
0.138
0.132
0.125
0.120
-0.001

Sample Name: Calcipotriol-01

Chemical Formula: C₂₇H₄₀O₃

Molecular Weight: 412.60



CAS: 112965-21-6

DMSO-d₆, 400 MHz

1.02
1.00

2.09
1.00

1.00
2.00

1.00
1.00

1.11

0.94

1.01

3.07
1.00

4.07
1.02

6.22

3.08
1.13

3.07
2.13

1.09

7

6

5

4

3

2

1

0

-1

PPM