

# M3588-Aminophylline-01-LCMS

## Sample Information

LCMS

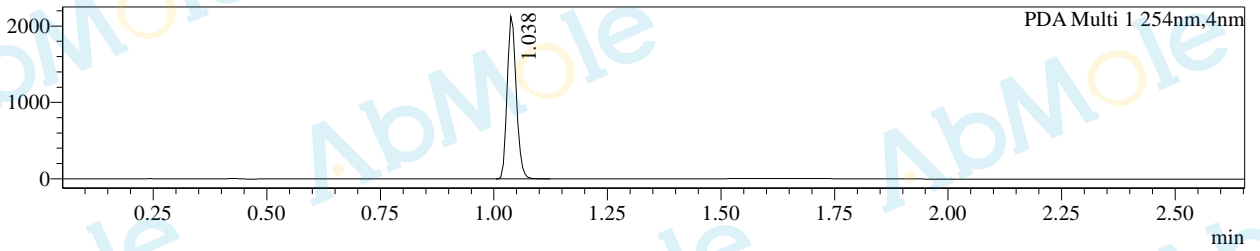
Acquired by : System Administrator  
 Sample Name : M3588-Aminophylline-01  
 Method File : B 5%-95%-P-new - 2.6min.lcm

Date Acquired : 2021/7/17 10:28:40  
 injection Volume : 3  
 Vial : 30

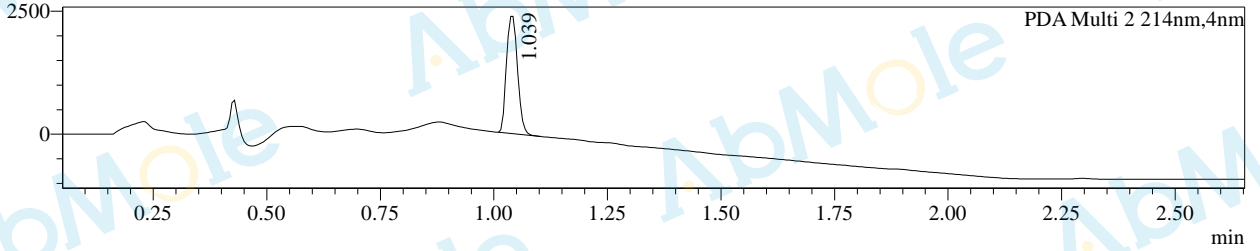
Column : Waters SunFire C18 50\*4.6mm 5um 2.000ml/min 2.6min  
 Pump A : 0.1% FA and 10% ACN in H2O  
 Pump B : 0.1% FA and 10% H2O in ACN

## Chromatogram

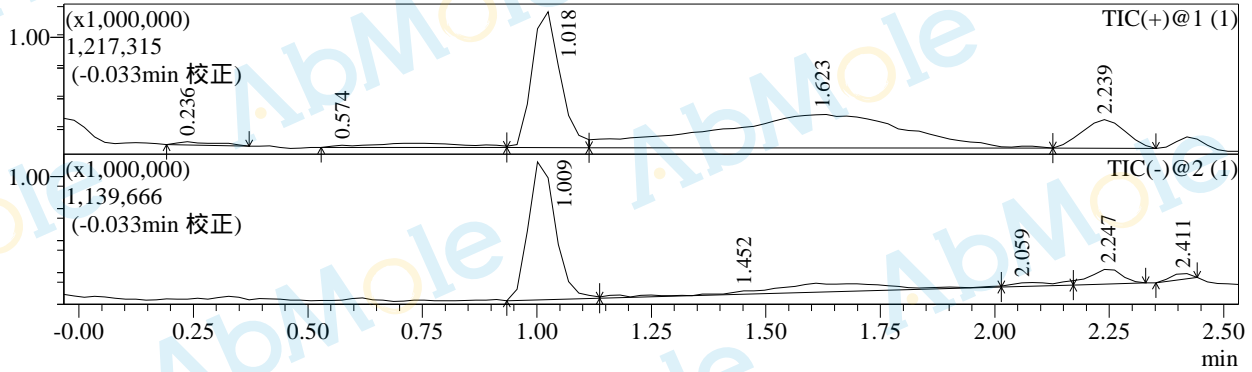
mAU



mAU



段号1



## Integration Results for DAD

PDA Ch1 254nm

Peak#	Ret. Time	Height	Area	Area%
1	1.038	2130341	2971320	100.000
总计		2130341	2971320	100.000

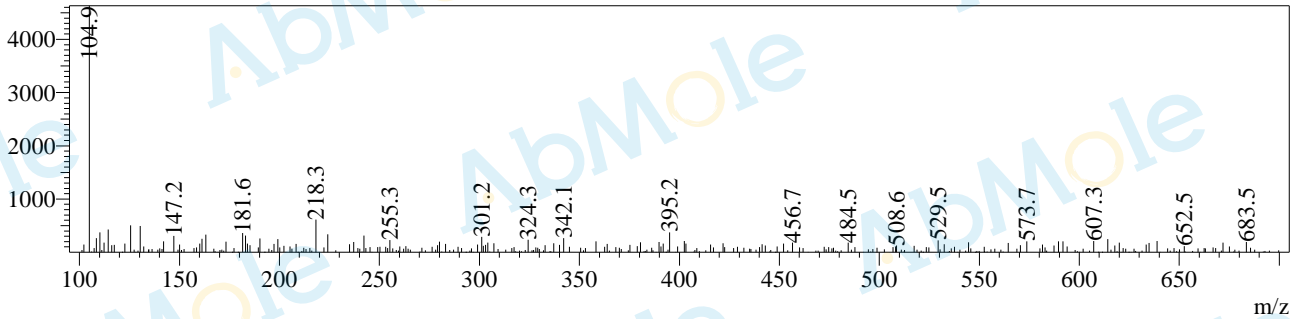
PDA Ch2 214nm

Peak#	Ret. Time	Height	Area	Area%
1	1.039	2384422	4046733	100.000

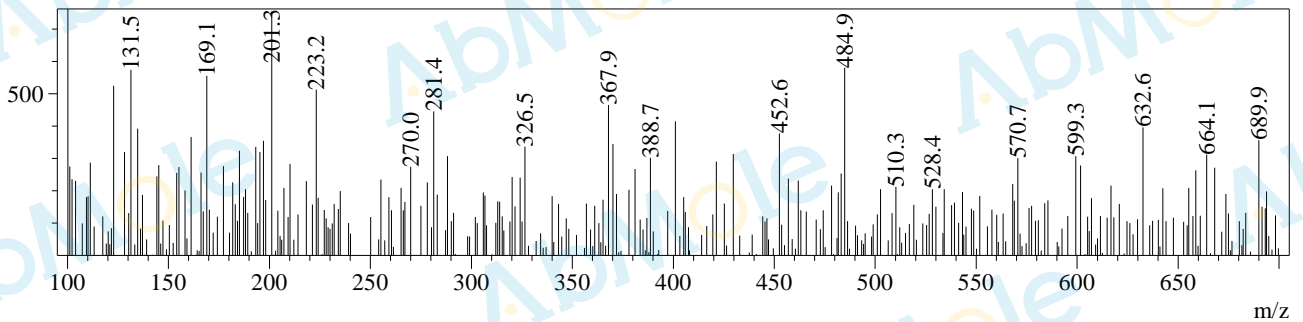
Peak#	Ret. Time	Height	Area	Area%
总计		2384422	4046733	100.000

### Mass Spectrum

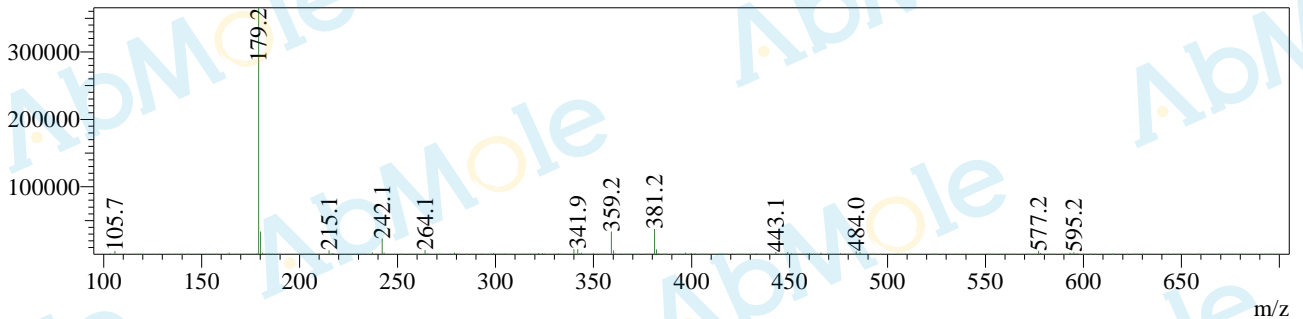
Rt=0.214min 正



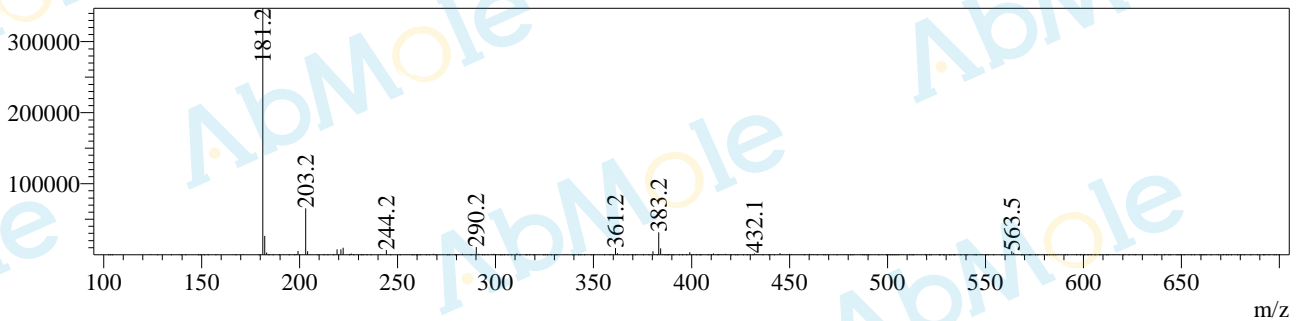
Rt=0.574min 正



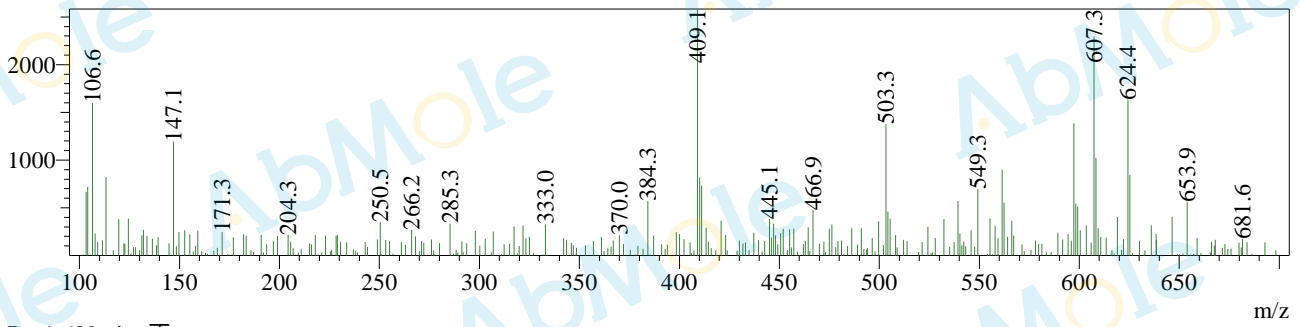
Rt=1.007min 负



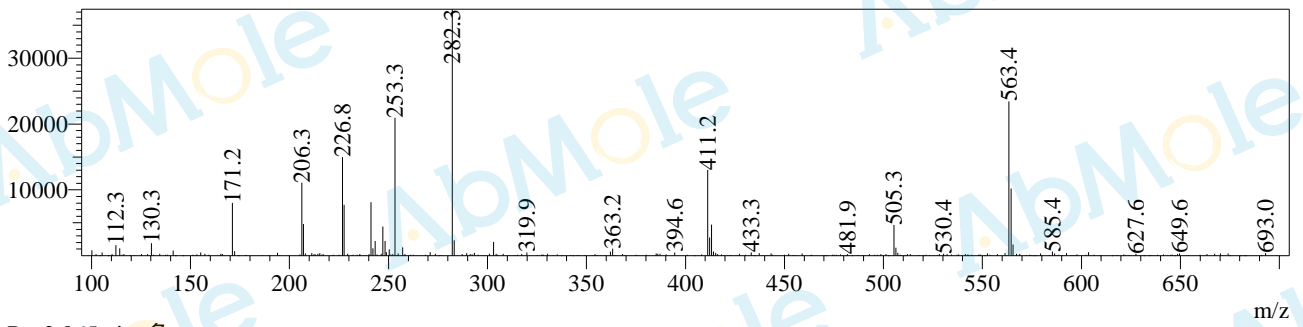
Rt=1.002min 正



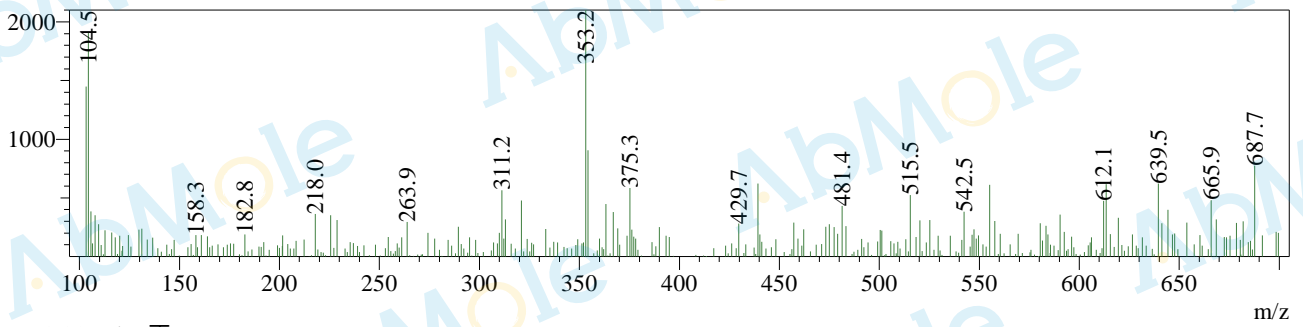
Rt=1.457min 负



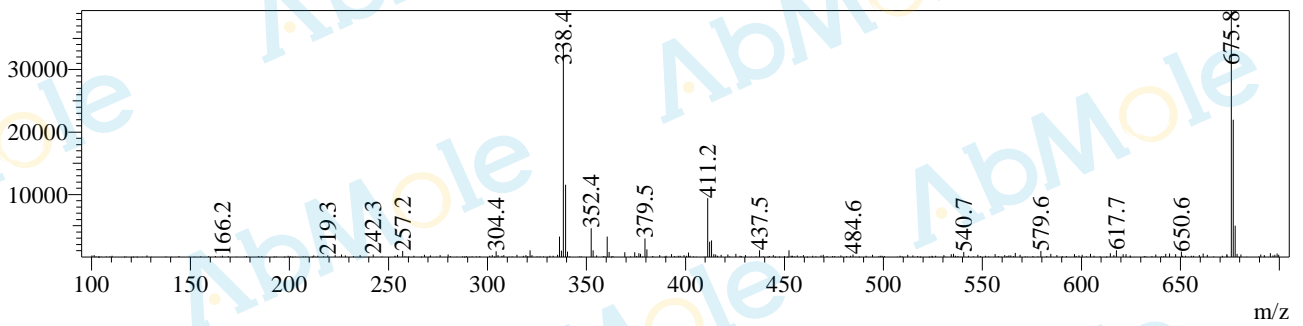
Rt=1.609min 正



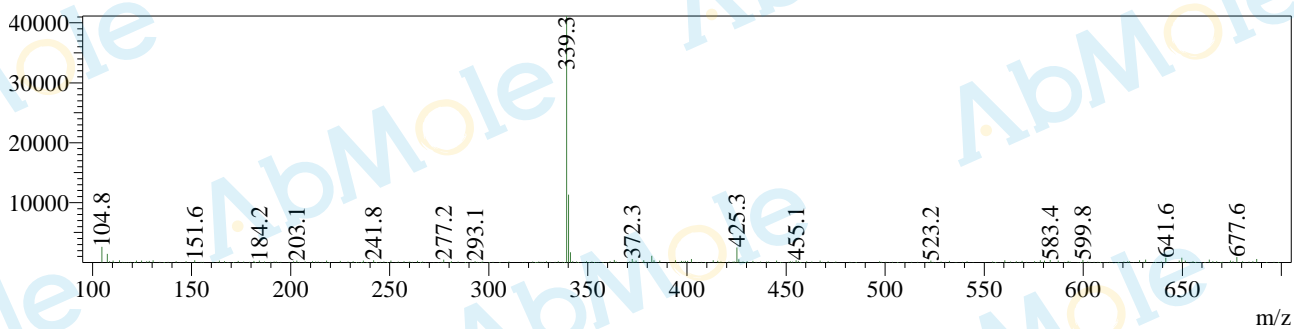
Rt=2.065min 负



Rt=2.217min 正



Rt=2.245min 负



Rt=2.402min 负

