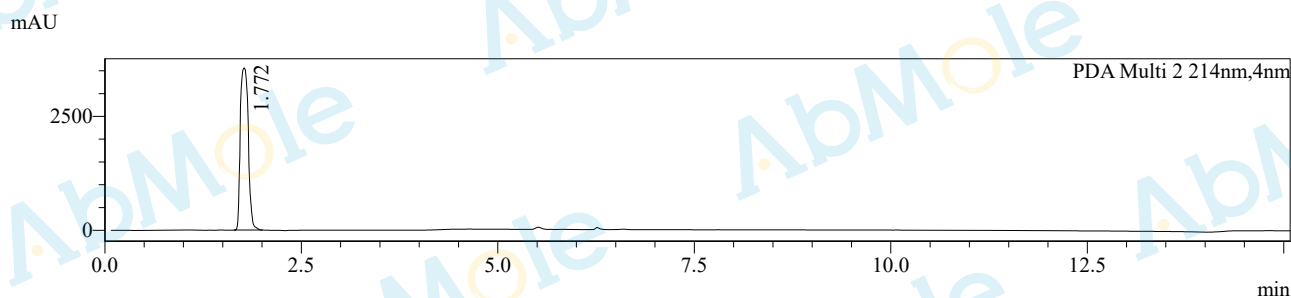
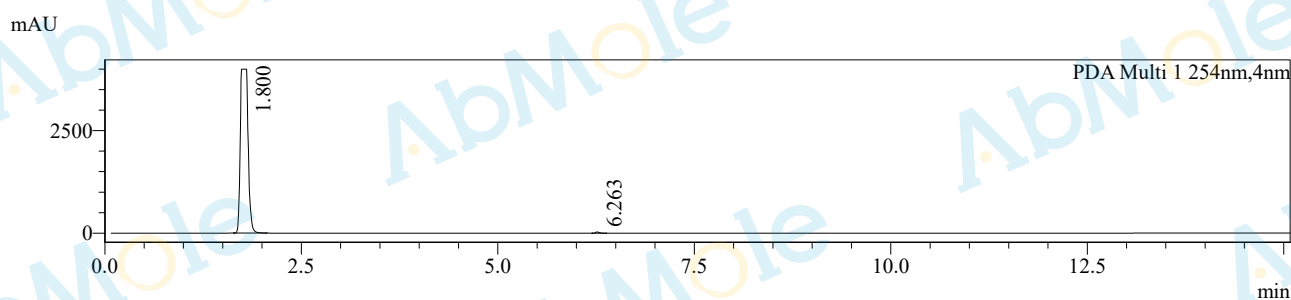


# HPLC Report

Sample Name : M22452-2'-C-Methyladenosine-01  
Method File : B 5%-95%-15min-P.lcm

Method info. : Sunfire C18 150\*4.6mm 5um 1.00ml/min Column Temperature: 40 °C  
Gradient: 10% B hold for 1.8 min , increase to 95 % B within 10.2 min, hold at 95 % B for 3.0 min, then back to 10% B within 0.01 min  
Pump A : 0.03% TFA in H2O  
Pump B : 0.03% TFA in ACN

## Chromatogram



## Integration Results for DAD

PDA Ch1 254nm

Peak#	Ret. Time	Height	Area	Area%
1	1.800	3996965	27179989	99.608
2	6.263	30737	106973	0.392
Total		4027702	27286962	100.000

PDA Ch2 214nm

Peak#	Ret. Time	Height	Area	Area%
1	1.772	3554672	25072832	100.000
Total		3554672	25072832	100.000