

Sample Name : M2223-Cisplatin-09

Method Info : Mobile Phase: A: water(0.01%TFA) B: ACN(0.01%TFA)

Gradient: 5% increase to 95%B within 1.3 min, 95%B for 1.7 min.

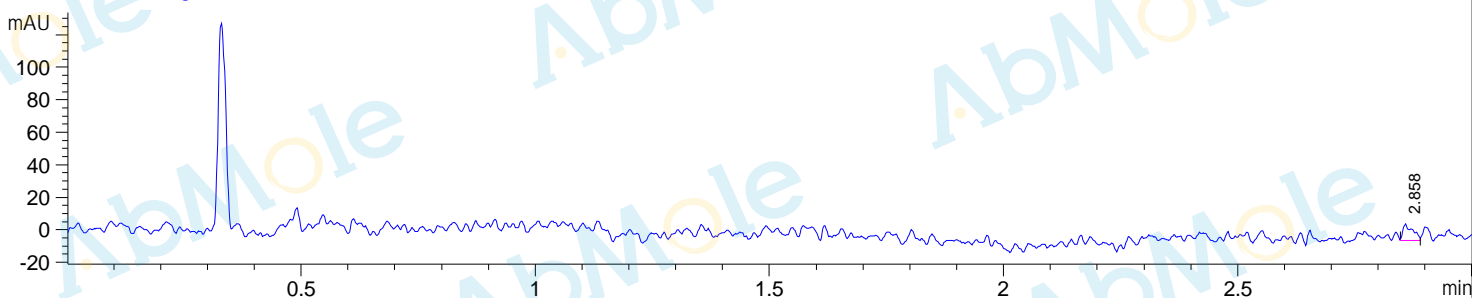
Flow Rate: 2.0ml/min

Column:Sunfire C18,4.6*50mm,3.5um

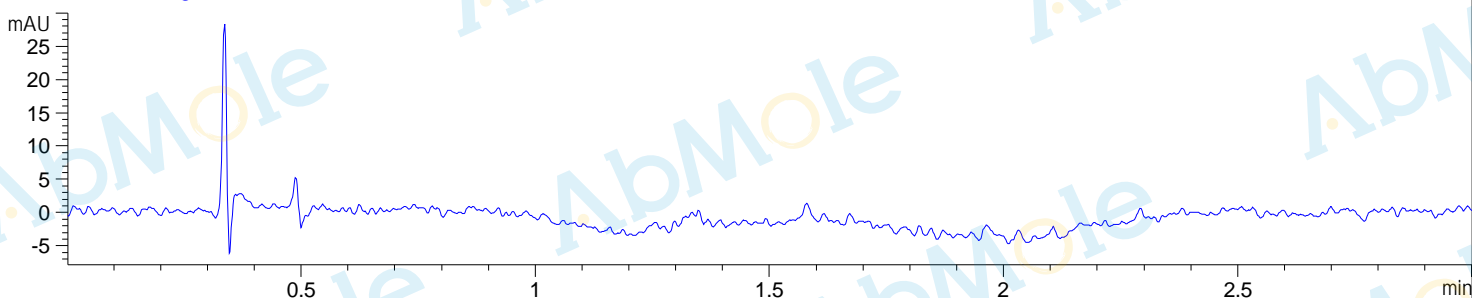
Column Temperature: 50 C

Detection:UV(214,4nm) and MS(ESI,Pos mode,50 to 700 amu)

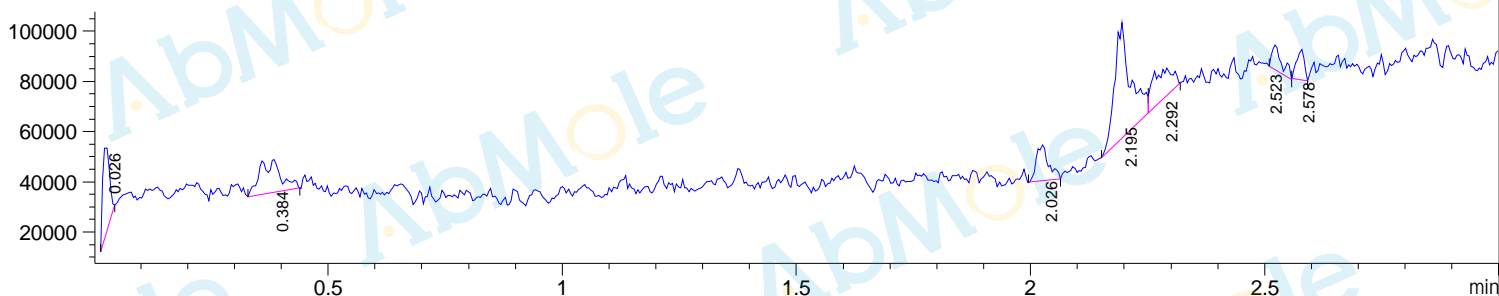
DAD1 A, Sig=214,4 Ref=off



DAD1 B, Sig=254,4 Ref=off



MSD1 TIC, MS File ES-API, Pos, Scan, Frag: 70



Integration Results for DAD1 A, Sig=214,4 Ref=off

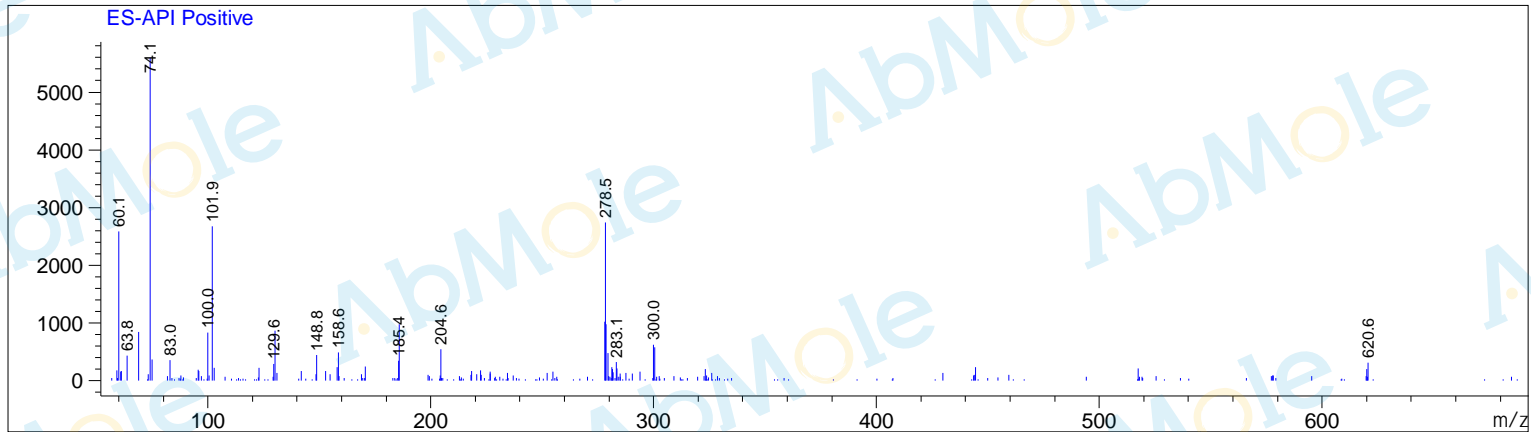
| RetTim | Width | Area | Height | Area% |
|--------|-------|-------|--------|--------|
| 2.86 | 0.02 | 15.17 | 10.06 | 100.00 |

Integration Results for DAD1 B, Sig=254,4 Ref=off

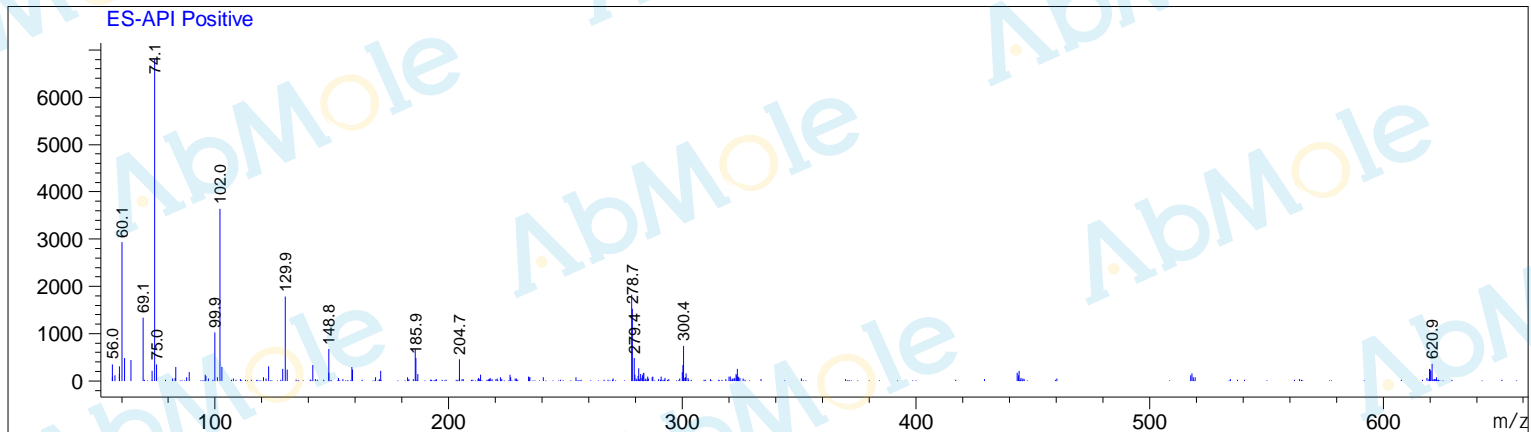
| RetTim | Width | Area | Height | Area% |
|--------|-------|------|--------|-------|
| | | | | |

Ret. Time: 0.03

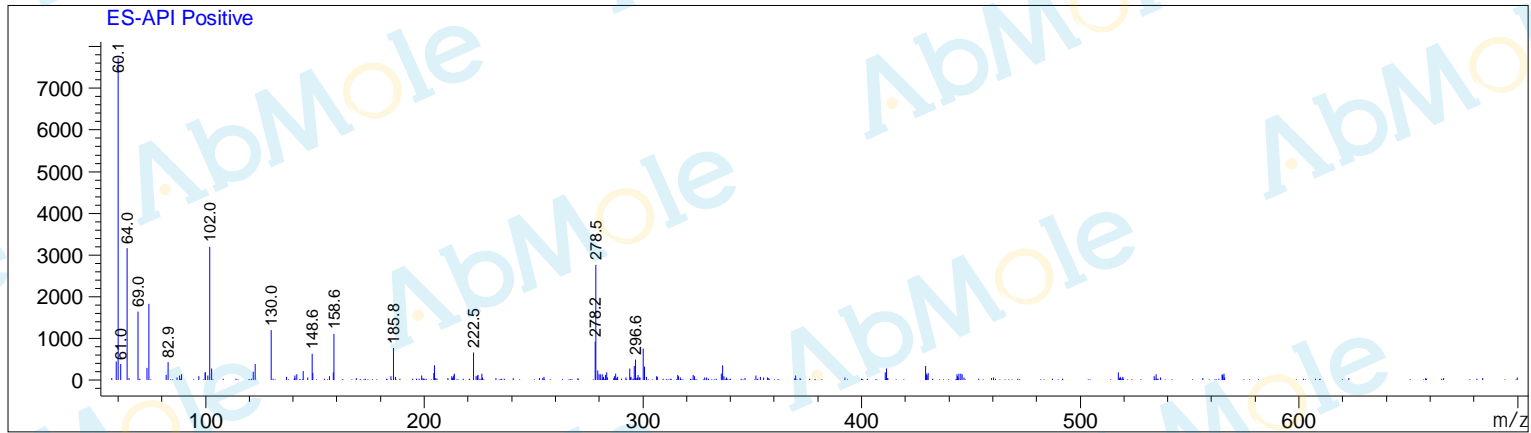
<<<< POSITIVE SPECTRA >>>>



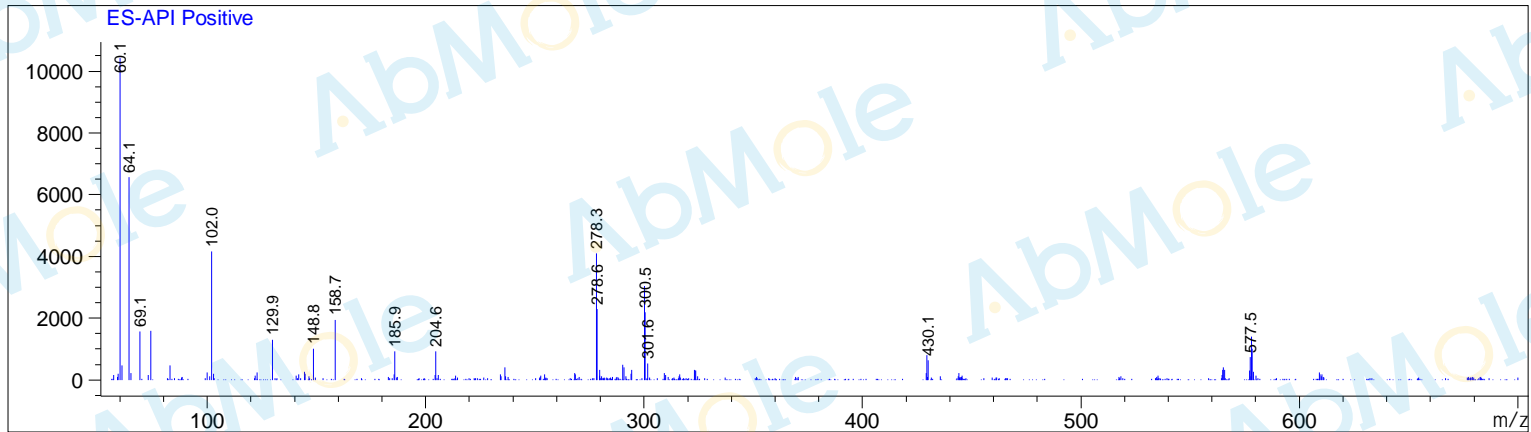
Ret. Time: 0.38



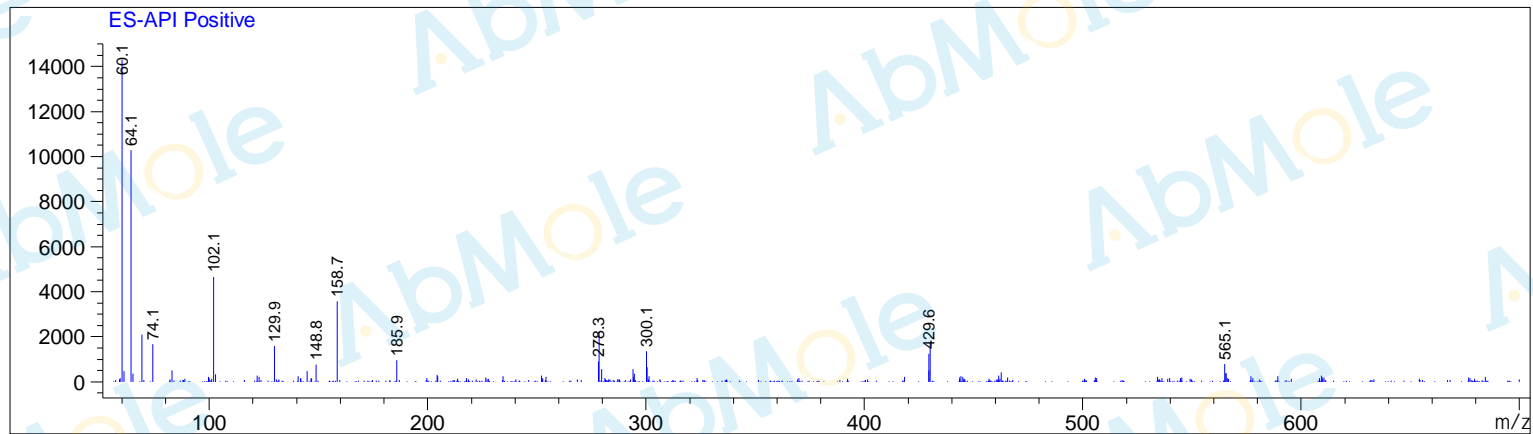
Ret. Time: 2.03



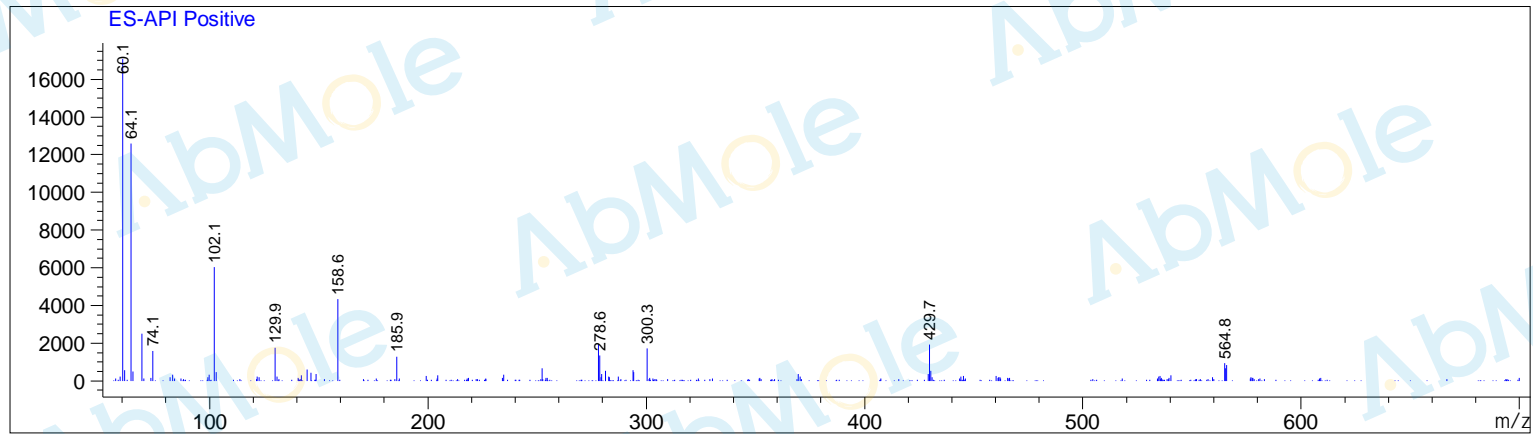
Ret. Time: 2.20



Ret. Time: 2.29



Ret. Time: 2.52



Ret. Time: 2.58

