

Shimadzu LCMS-029 Report

Sample Information

LCMS

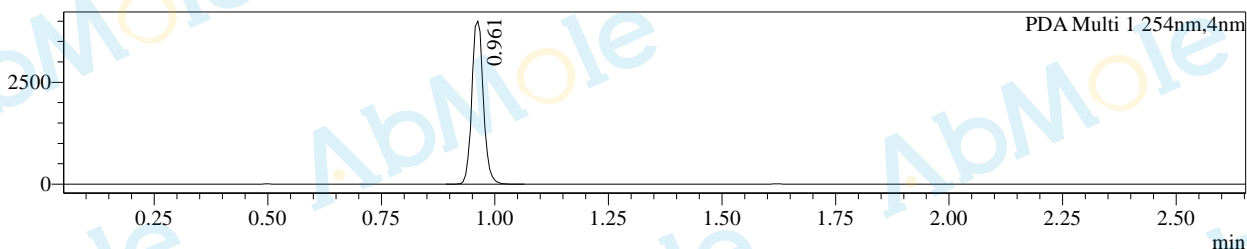
Acquired by : System Administrator
 Sample Name : M2129-Temozolomide-10
 Method File : B 5%-95%-P-new - 2.6min.lcm

Date Acquired : 2021/12/7 14:01:18
 injection Volume : 4
 Vial : 23

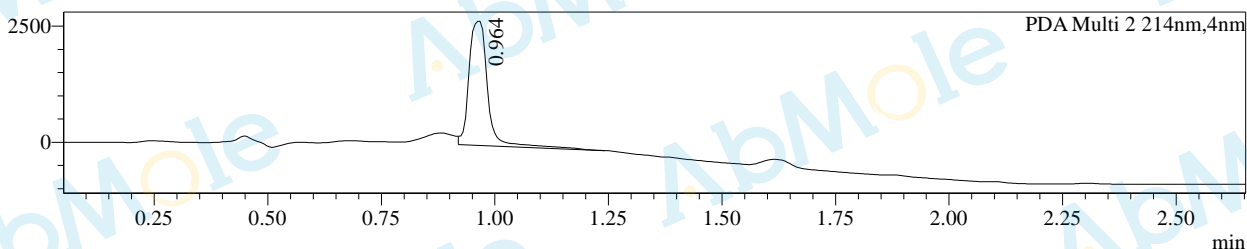
Column : Waters SunFire C18 50*4.6mm 5um 2.000ml/min 2.6min
 Pump A : 0.1% FA and 10% ACN in H2O
 Pump B : 0.1% FA and 10% H2O in ACN

Chromatogram

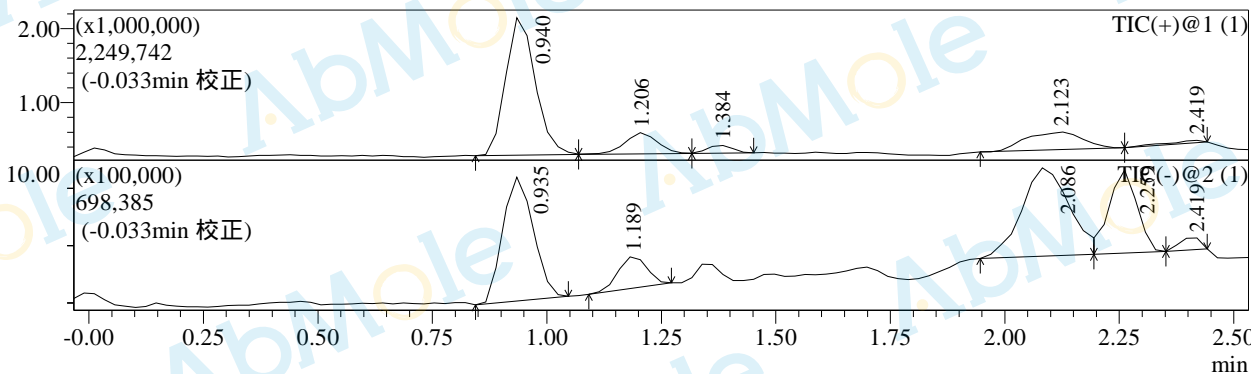
mAU



mAU



段号1



Integration Results for DAD

PDA Ch1 254nm

Peak#	Ret. Time	Height	Area	Area%
1	0.961	3998576	7038011	100.000
总计		3998576	7038011	100.000

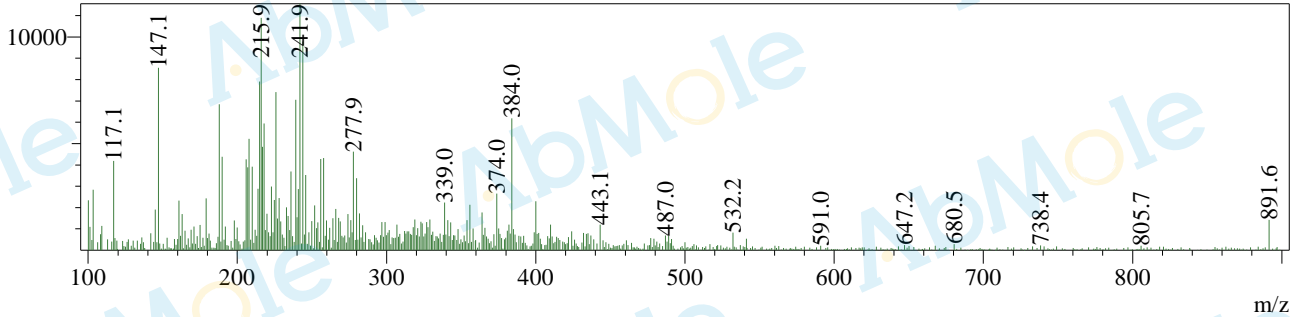
PDA Ch2 214nm

Peak#	Ret. Time	Height	Area	Area%
1	0.964	2670815	7593131	100.000

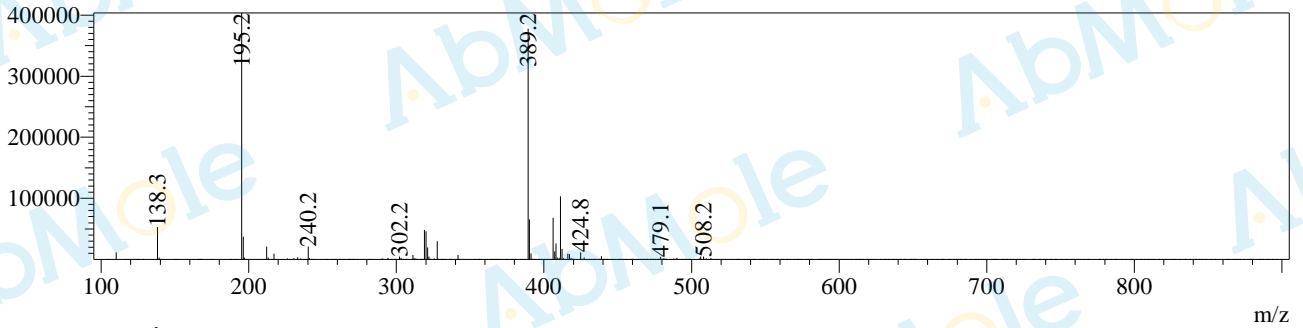
Peak#	Ret. Time	Height	Area	Area%
总计		2670815	7593131	100.000

Mass Spectrum

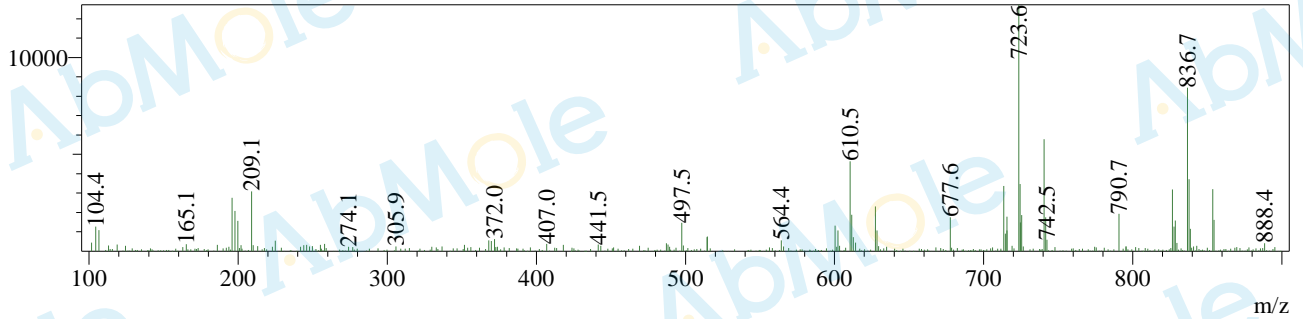
Rt=0.940min 负



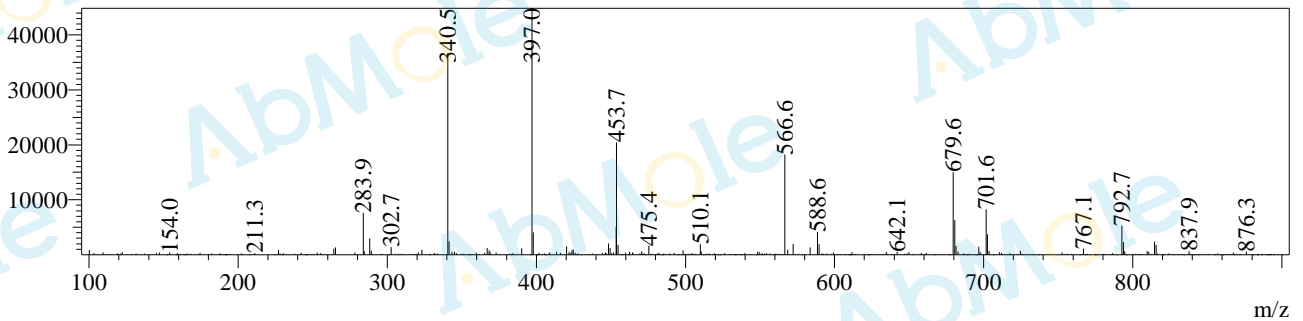
Rt=0.934min 正



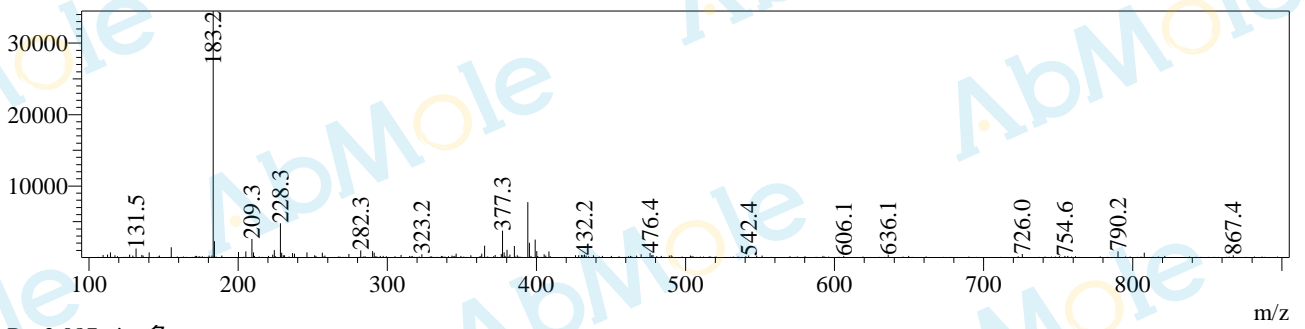
Rt=1.187min 负



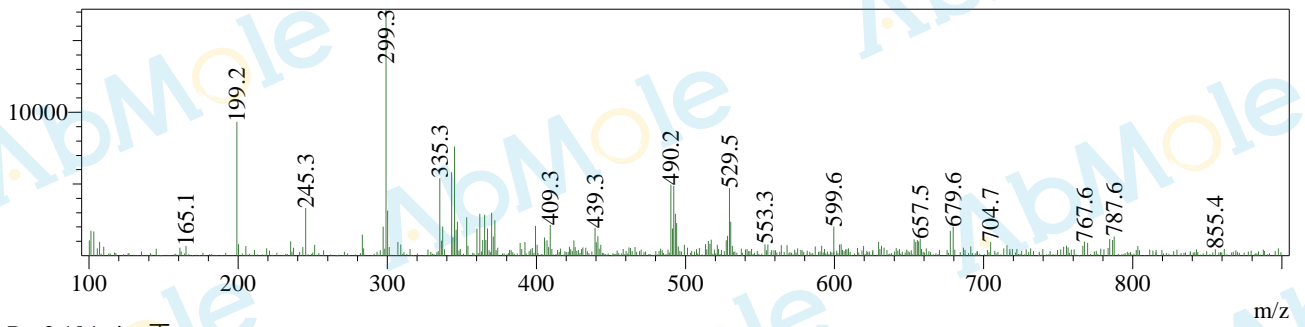
Rt=1.204min 正



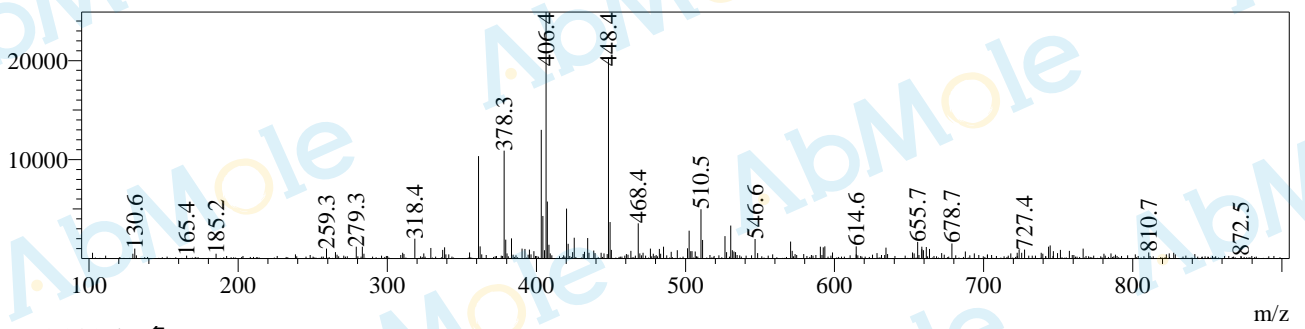
Rt=1.384min 正



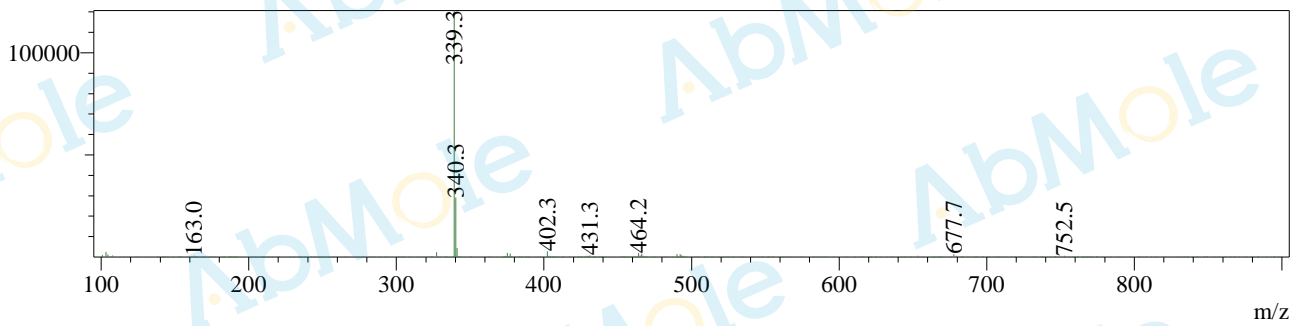
Rt=2.087min 负



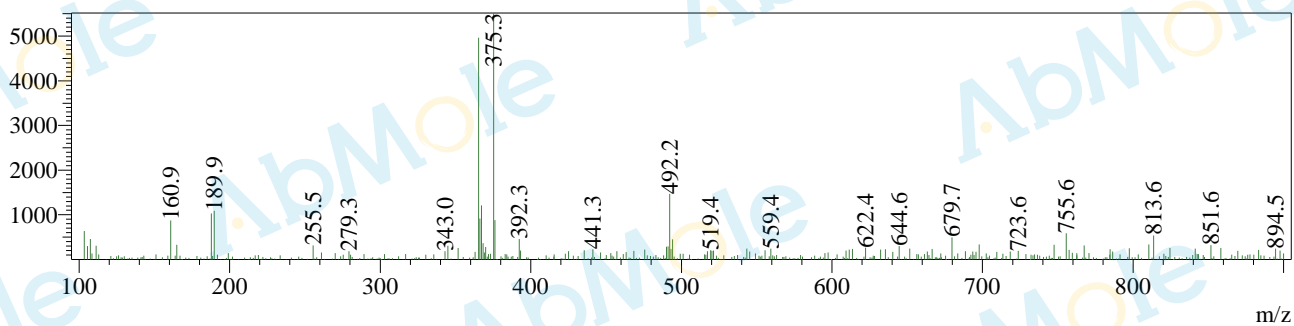
Rt=2.104min 正



Rt=2.245min 负



Rt=2.425min 负



Rt=2.419min 正

