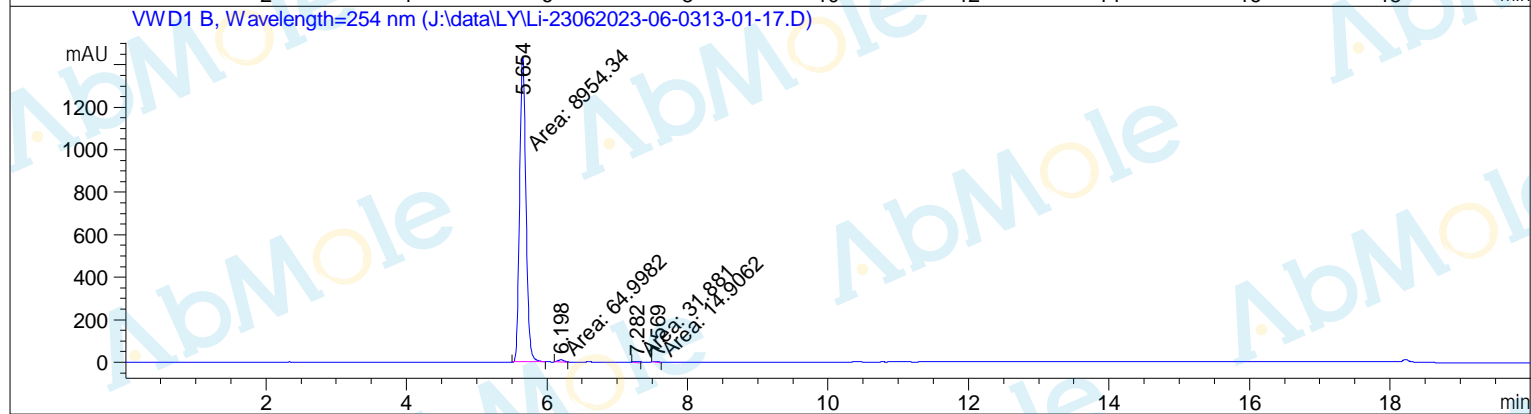
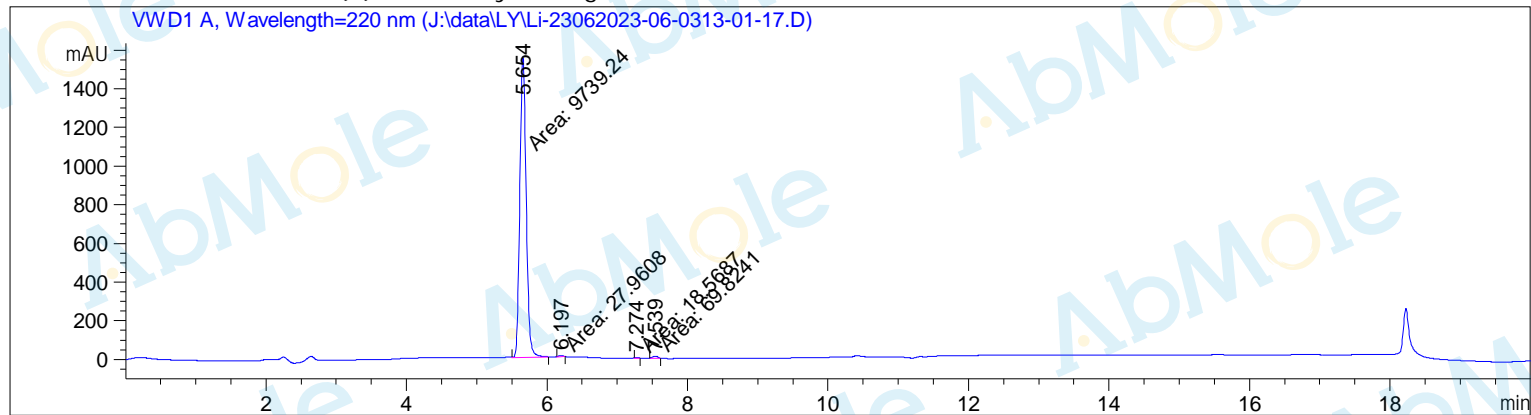


Sample Name: M20964-UM171-01

```

=====
Acq. Operator   : SYSTEM
Sample Operator : SYSTEM
Acq. Instrument : 1260
Injection Date  : 6/3/2023 13:04:05
Location       : P2-D-01
Inj Volume     : 1.000 µl
Different Inj Volume from Sample Entry! Actual Inj Volume : 10.000 µl
Acq. Method    : C:\Chem32\1\Methods\Analytical-220-254nm.M
Last changed   : 3/3/2023 10:15:48 by SYSTEM
Analysis Method : C:\CHEM32\1\METHODS\Analytical-(5-5)-0.5ML-20min.M
Last changed   : 10/28/2019 0:36:11 by SYSTEM
Additional Info : Peak(s) manually integrated
    
```



=====
 Area Percent Report
 =====

```

Sorted By      : Signal
Multiplier    : 1.0000
Dilution      : 1.0000
Sample Amount  : 1.00000 [ng/ul] (not used in calc.)
Use Multiplier & Dilution Factor with ISTDs
    
```

Signal 1: VWD1 A, Wavelength=220 nm

Peak #	RetTime [min]	Type	Width [min]	Area [mAU*s]	Height [mAU]	Area %
1	5.654	MM	0.1047	9739.23926	1549.84546	98.8194
2	6.197	MM	0.0774	27.96079	6.02237	0.2837
3	7.274	MM	0.0656	18.56869	4.71715	0.1884
4	7.539	MM	0.0939	69.82412	12.39664	0.7085

Totals : 9855.59286 1572.98162

Signal 2: VWD1 B, Wavelength=254 nm

Peak #	RetTime [min]	Type	Width [min]	Area [mAU*s]	Height [mAU]	Area %
1	5.654	MM	0.1041	8954.33887	1433.76697	98.7670
2	6.198	MM	0.0982	64.99819	11.03575	0.7169
3	7.282	MM	0.1002	31.88103	5.30385	0.3517
4	7.569	MM	0.0925	14.90623	2.68685	0.1644

Totals : 9066.12432 1452.79342

=====
*** End of Report ***